



# **GOLD AND COMPANY, LLC**



**5606-10 Belair Road, Baltimore, MD 21206**

## **Gold and Company, LLC**

**5601 Newbury St.  
Baltimore, MD 21209**

**Mitch Gold  
410.456.2492  
[Mitch@goldcommercial.net](mailto:Mitch@goldcommercial.net)**

**Alex Simone  
443.845.4413  
[Alex@goldcommercial.net](mailto:Alex@goldcommercial.net)**

**Office: 410.578.1300  
[www.goldcommercial.net](http://www.goldcommercial.net)**

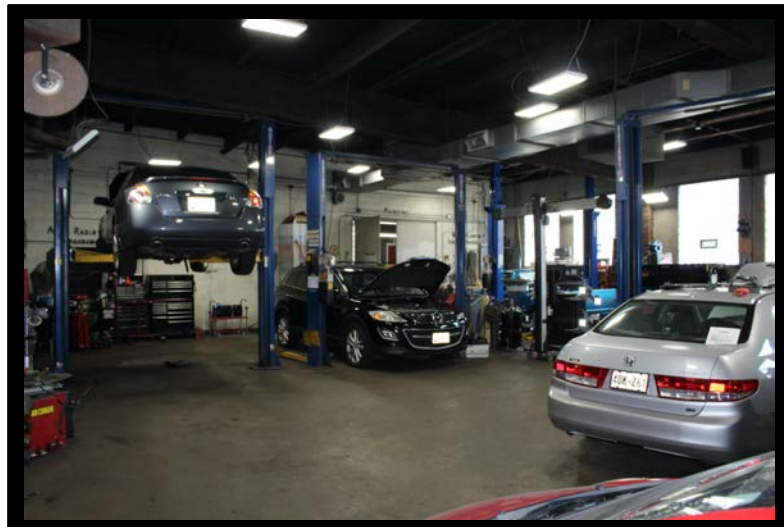
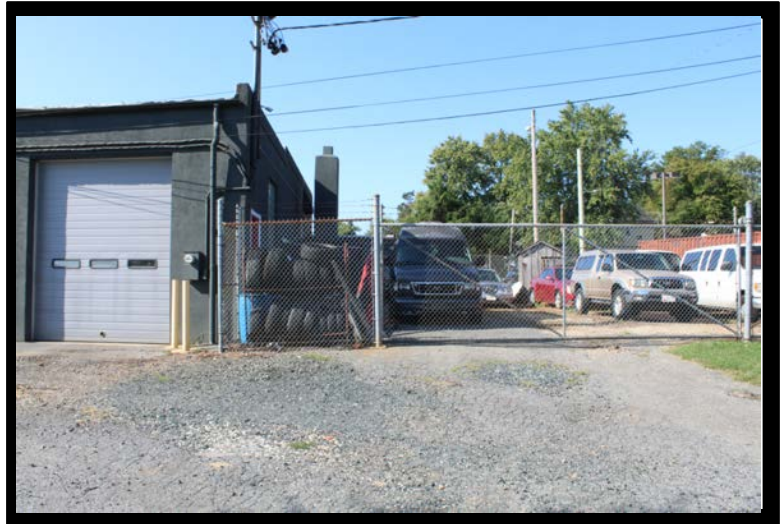
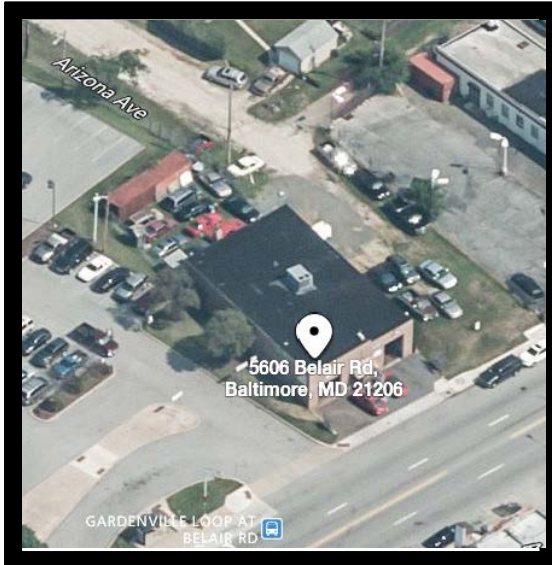
- **Auto Repair/Body Shop For Sale**
- **Baltimore City location**
- **4,000 +/- sf building**
- **4,000 +/- sf fenced rear lot**
- **Many recent updates**
  - **Roof, HVAC, lights, exterior**
- **Equipment included**
- **C-3 zoning – Commercial**
- **Ideal for a growing mechanic**



# Gold and Company

*Commercial Real Estate in the Baltimore Metropolitan Area*

**5606-10 Belair Road, Baltimore, MD 21206**



**Mitch Gold / Alex Simone**  
**Gold and Company, LLC**  
**5601 Newbury St.**  
**Baltimore, MD 21209**

**410.578.1300**  
**[www.goldcommercial.net](http://www.goldcommercial.net)**



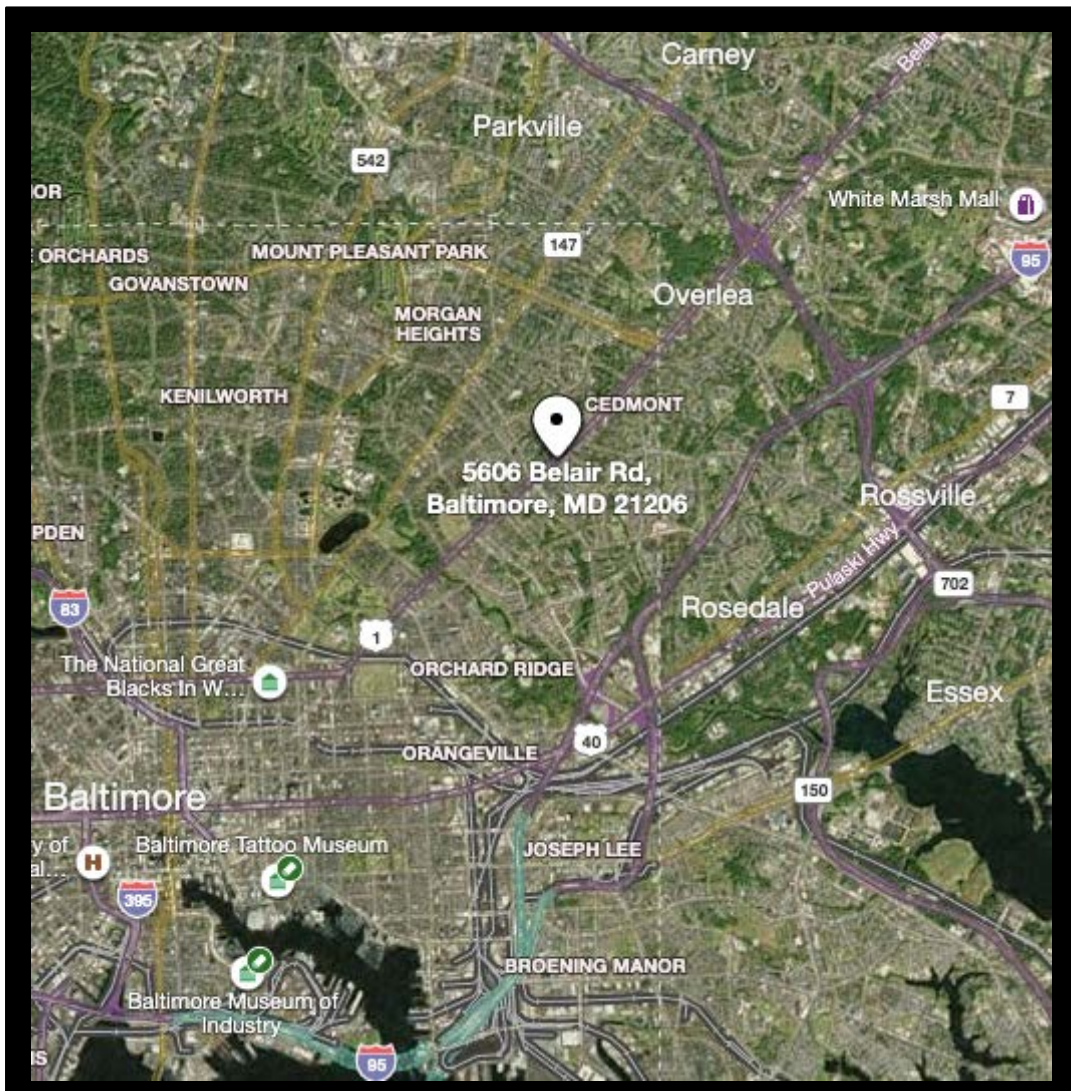


Est. 1999

# Gold and Company

*Commercial Real Estate in the Baltimore Metropolitan Area*

**5606-10 Belair Road, Baltimore, MD 21206**



**Mitch Gold / Alex Simone**  
**Gold and Company, LLC**  
**5601 Newbury St.**  
**Baltimore, MD 21209**

**410.578.1300**  
**[www.goldcommercial.net](http://www.goldcommercial.net)**