



GOLD AND COMPANY, LLC



2000 Haines St. Baltimore, MD 21230

Gold And Company, LLC

**5601 Newbury St.
Baltimore, MD 21209**

**Jim Chivers
443.928.7522 cell
jim@goldcommercial.net**

**Mitch Gold
410.456.2492 cell
mitch@goldcommercial.net**

- **Fueling Facility and Convenience Store FOR SALE**
- **BP Supplier Agreement ends 4 Q 2020**
- **2,400 sf Building— Convenience Store and Eatery**
- **26,575 sf Land Area**
- **Billboard Lease in Place**
- **4 Pumps with 10,000 Gallon Tanks**
- **Built: 1997**
- **C-5 DC Zoning—High Density Commercial**
- **1 Block from Horseshoe Casino / 3 Blocks from M&T Bank Stadium / 4 Blocks from Camden Yards**
- **High Traffic Count; Over 36,000 Daily**
- **Call For More Information**

This property offering is subject to change without notice. All information is deemed reliable but not guaranteed.

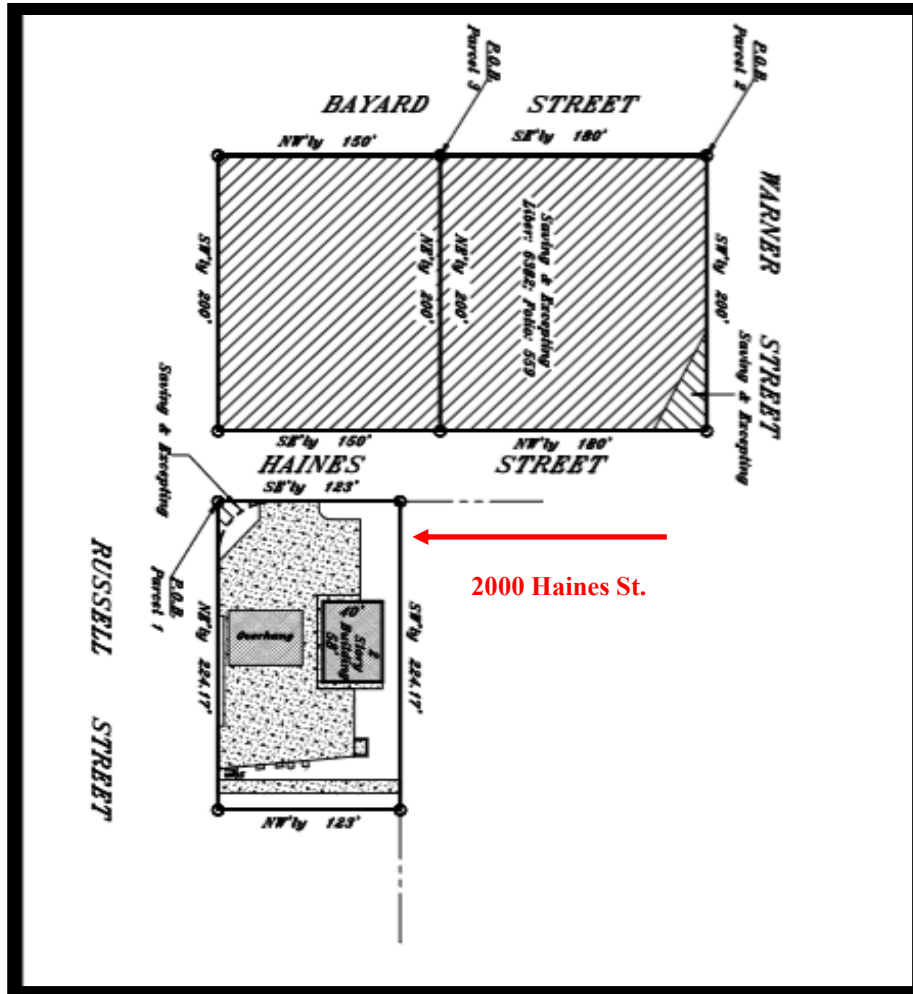


Gold And Company

Commercial Real Estate in the Baltimore Metropolitan Area

2000 Haines St. Baltimore, MD 21230

Site Plan



Jim Chivers / Mitch Gold
Gold And Company, LLC
5601 Newbury St.
Baltimore, MD 21209

410.578.1300 (Office)

www.goldcommercial.net

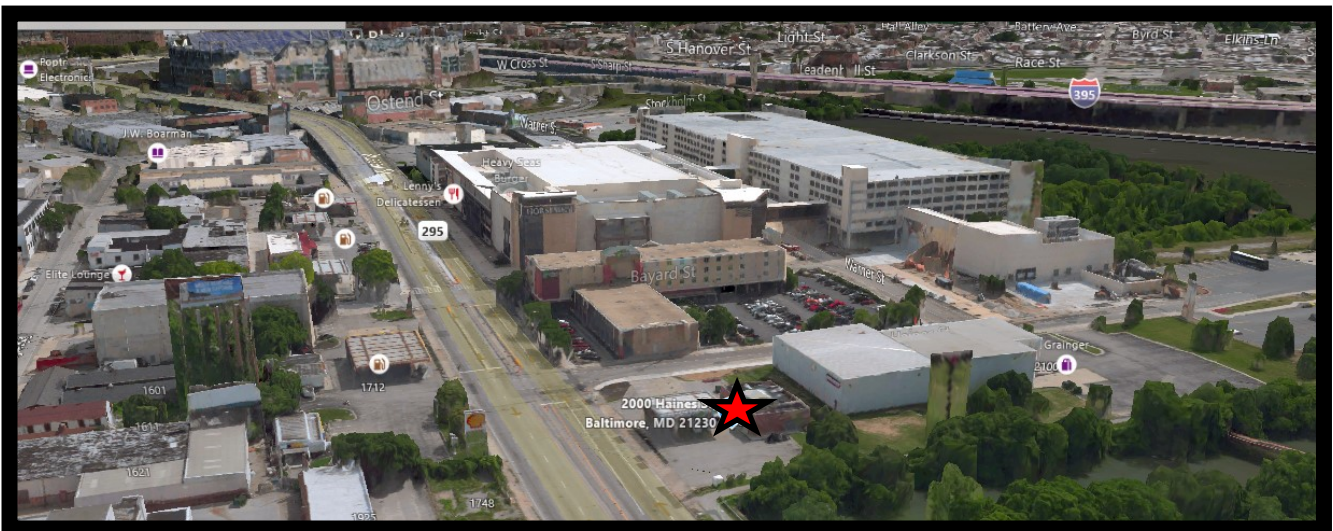


Gold And Company

Commercial Real Estate in the Baltimore Metropolitan Area

2000 Haines St. Baltimore, MD 21230

Aerial / Map



Jim Chivers / Mitch Gold
Gold And Company, LLC
5601 Newbury St.
Baltimore, MD 21209

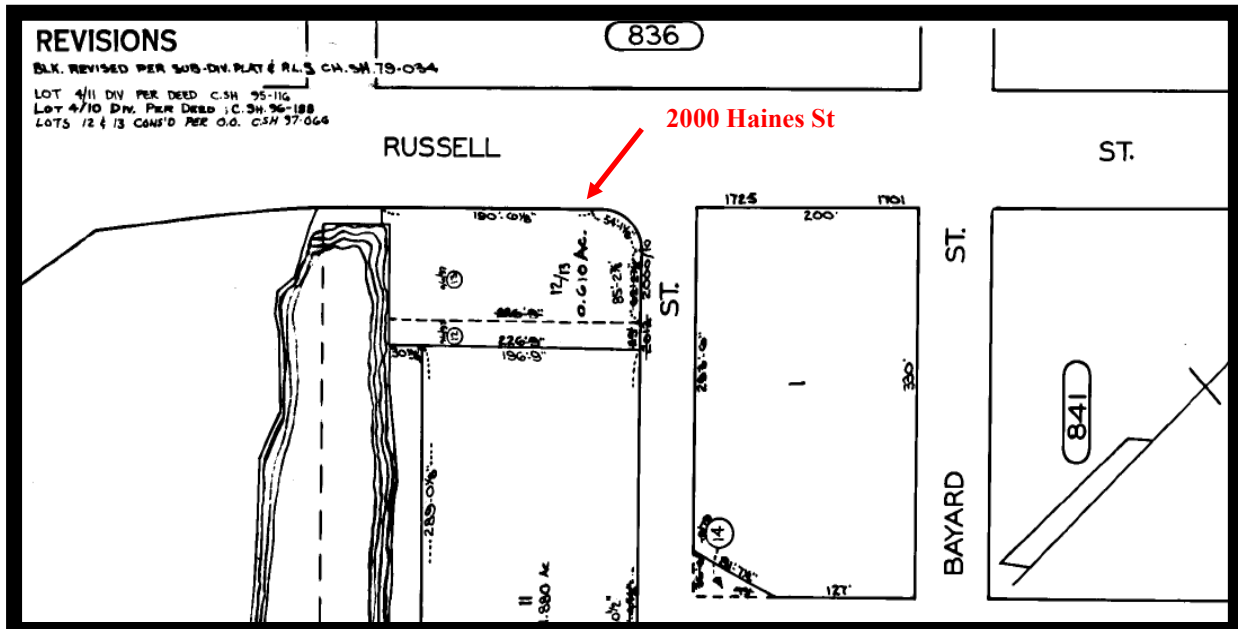
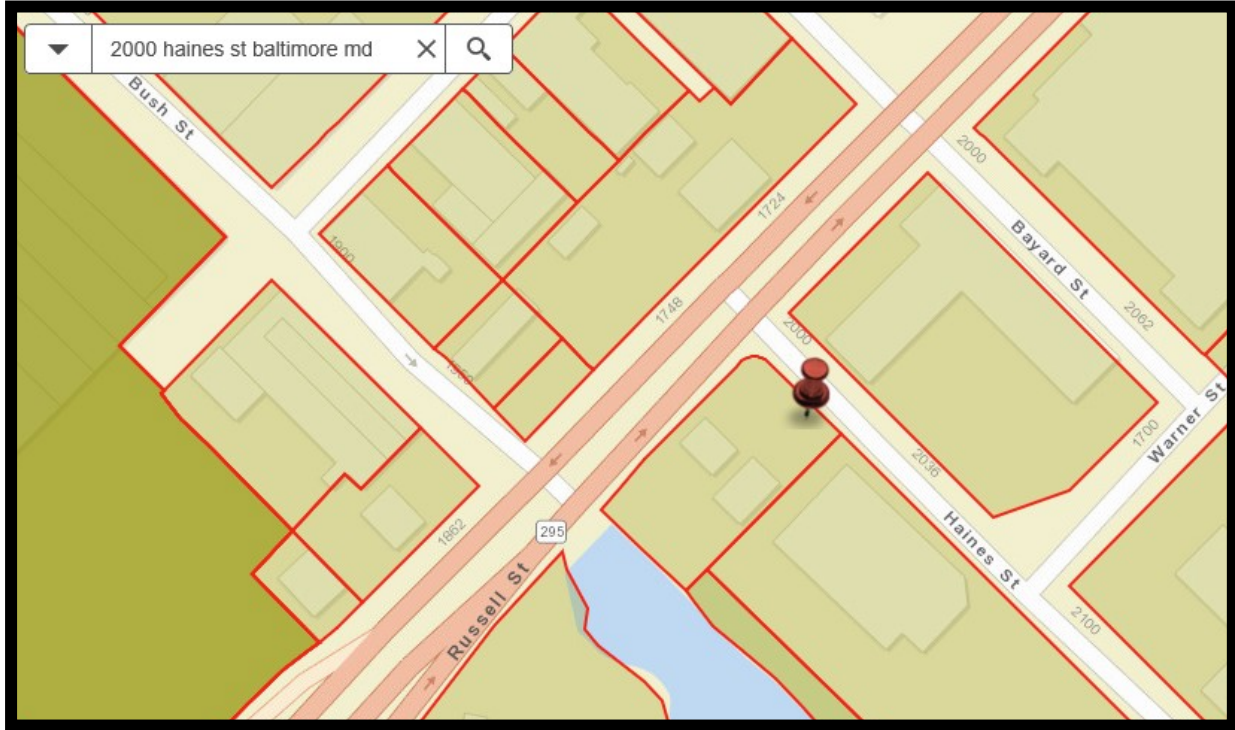
410.578.1300 (Office)

www.goldcommercial.net



Gold And Company

Commercial Real Estate in the Baltimore Metropolitan Area



Jim Chivers / Mitch Gold
Gold And Company, LLC
5601 Newbury St.
Baltimore, MD 21209

410.578.1300 (Office)

www.goldcommercial.net