



GOLD AND COMPANY, LLC

Commercial Real Estate in the Baltimore Metropolitan Area



121 Riverside Rd. Baltimore, MD 21225

Gold And Company, LLC

**5601 Newbury St.
Baltimore, MD 21209**

Jim Chivers

443.928.7522 cell

jim@goldcommercial.net

www.goldcommercial.net

- **INDUSTRIAL BUILDING AVAILABLE FOR SALE**
- **+/- 10,000 sf Freestanding Warehouse**
- **Located in an Opportunity Zone**
- **Baltimore City**
- **Exterior Dock Well and Drive-In Doors**
- **+/- 14-16' Ceiling Height**
- **Heavy Power—3 Phase**
- **Contact For More Information**

This property offering is subject to change without notice. All information is deemed reliable but not guaranteed.

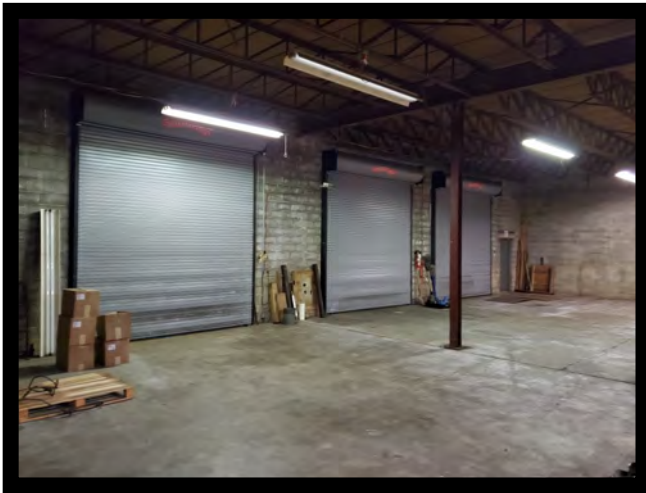
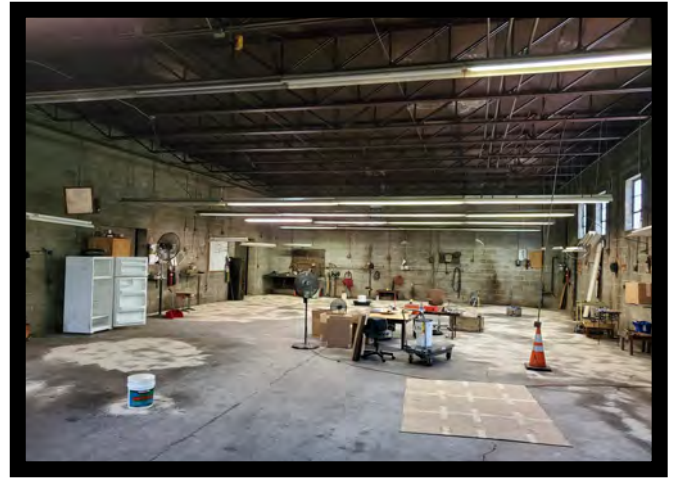
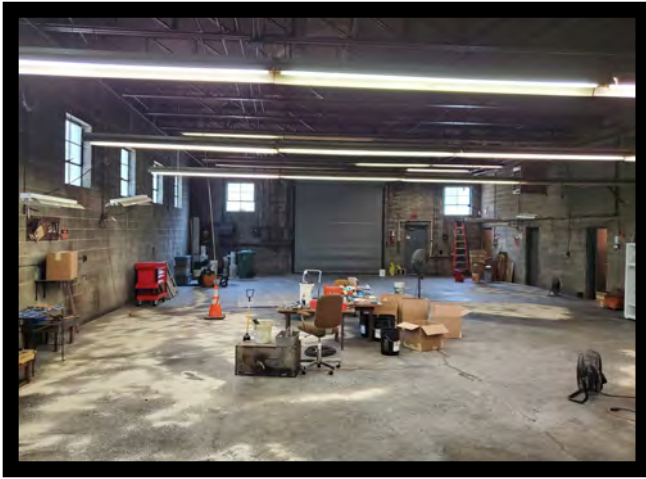


Gold And Company

Commercial Real Estate in the Baltimore Metropolitan Area

121 Riverside Rd. Baltimore, MD 21225

Interior Pictures



**Jim Chivers
Gold And Company, LLC
5601 Newbury St.
Baltimore, MD 21209**

410.578.1300 (Office)

www.goldcommercial.net

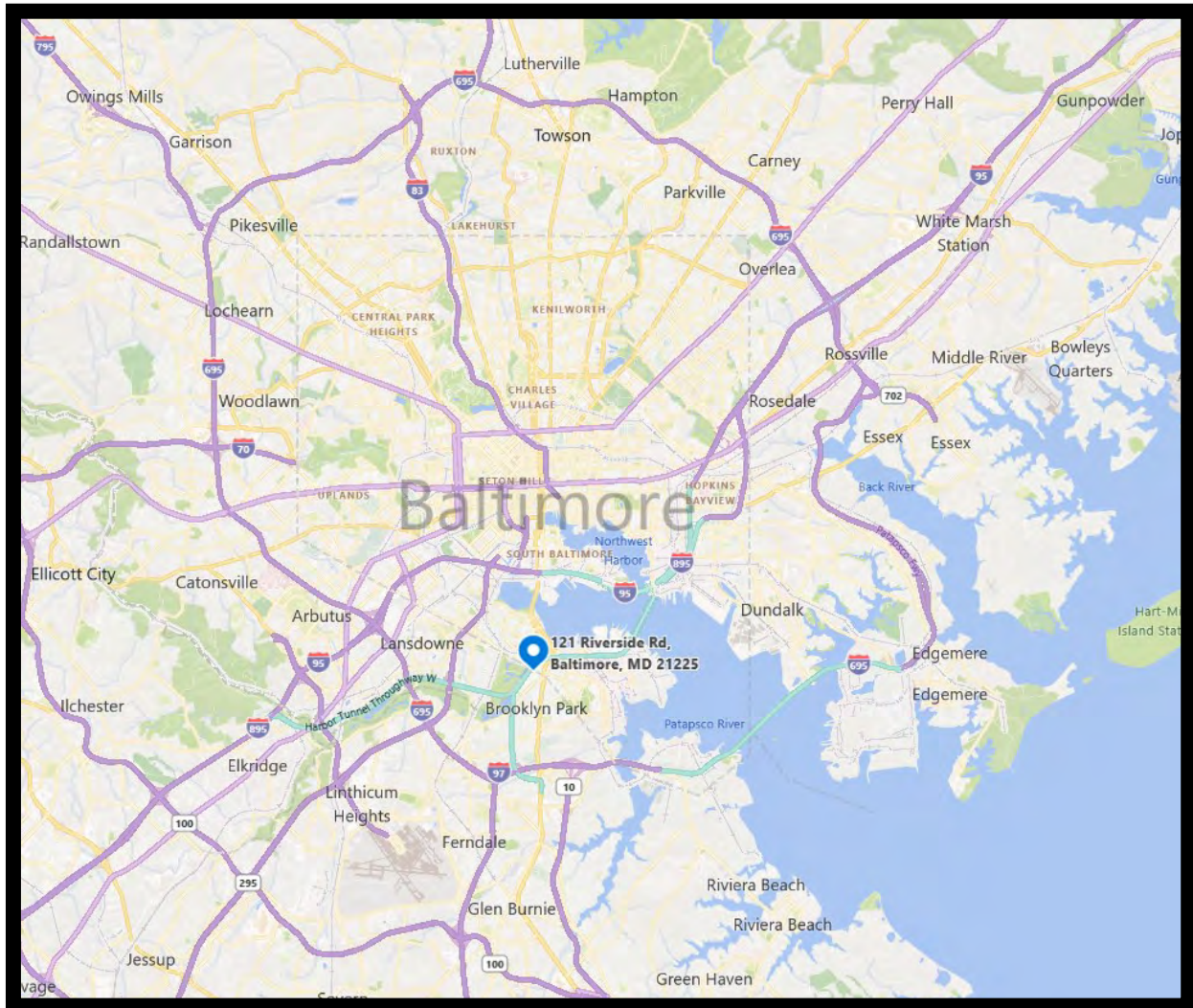


Gold And Company

Commercial Real Estate in the Baltimore Metropolitan Area

121 Riverside Rd. Baltimore, MD 21225

Map



Jim Chivers
Gold And Company, LLC
5601 Newbury St.
Baltimore, MD 21209

410.578.1300 (Office)

www.goldcommercial.net