



GOLD AND COMPANY, LLC

Commercial Real Estate in the Baltimore Metropolitan Area



111 S. Kresson St. Baltimore, MD 21224

Gold And Company, LLC

**5601 Newbury St.
Baltimore, MD 21209**

Jim Chivers

443.928.7522 cell

jim@goldcommercial.net

www.goldcommercial.net

- **East Baltimore City Industrial Building**
- **Available For Lease / Sale**
- **+/- 9,750 sf Building**
- **I-2 Zoning—Baltimore City—Heavy Industrial**
- **Drive-In Access**
- **Ideal for Welding / Fabrication / Woodworkers**
- **Heavy Power**
- **Contact For More Information**

This property offering is subject to change without notice. All information is deemed reliable but not guaranteed.

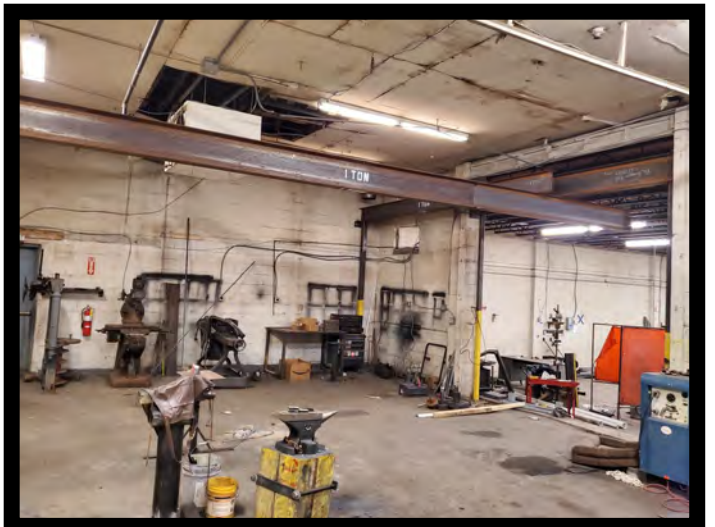
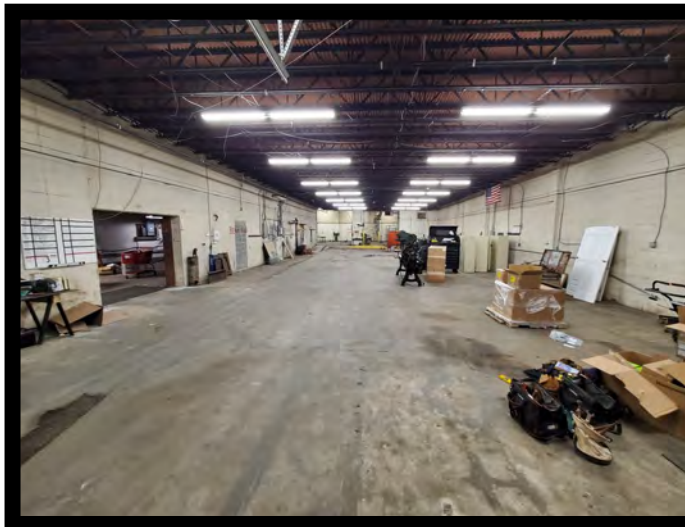
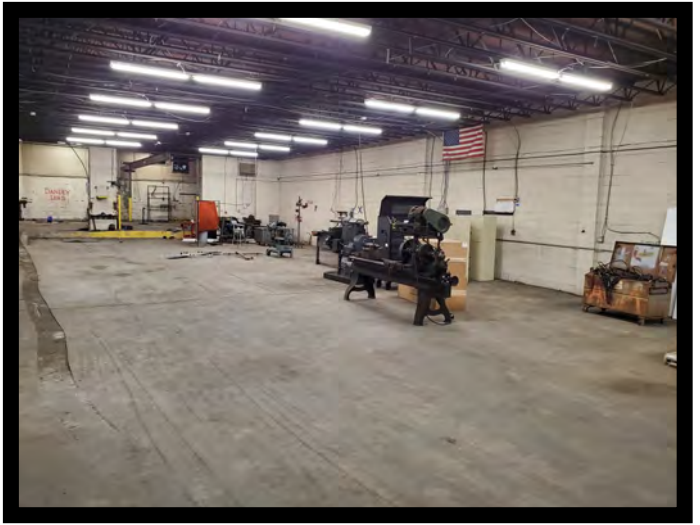
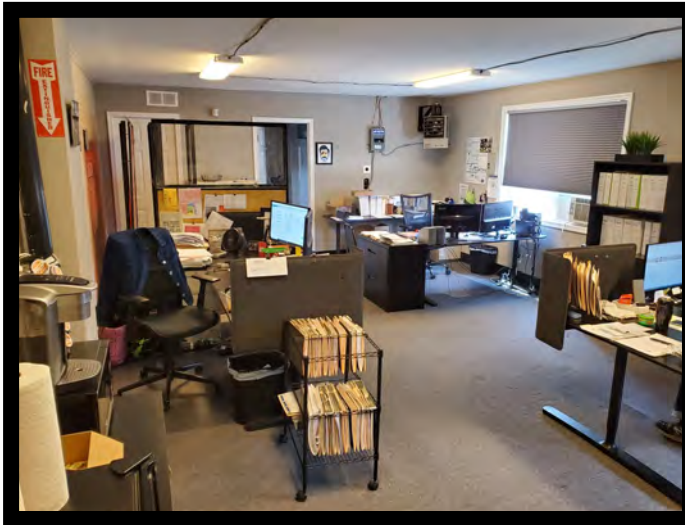


Gold And Company

Commercial Real Estate in the Baltimore Metropolitan Area

111 S. Kresson St. Baltimore, MD 21224

Interior Pictures



**Jim Chivers
Gold And Company, LLC
5601 Newbury St.
Baltimore, MD 21209**

410.578.1300 (Office)

www.goldcommercial.net

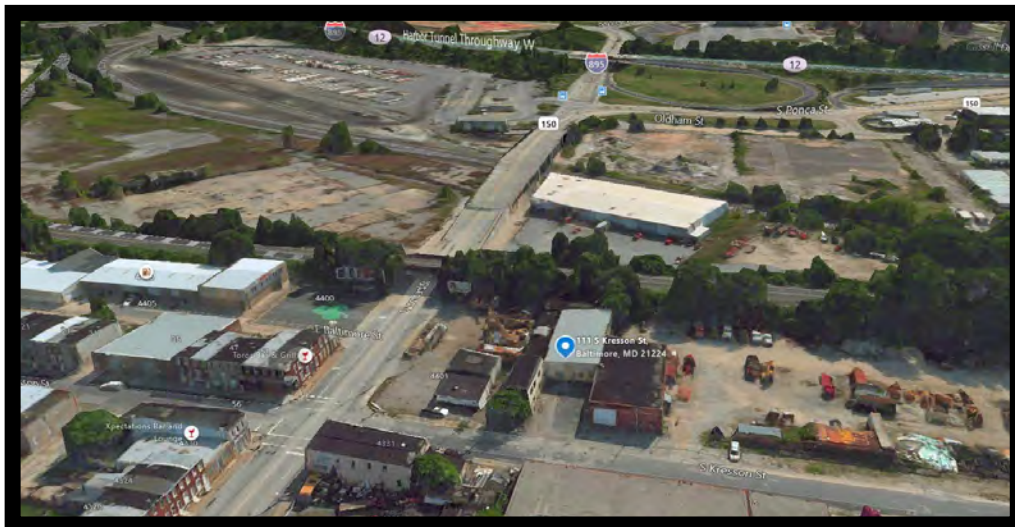
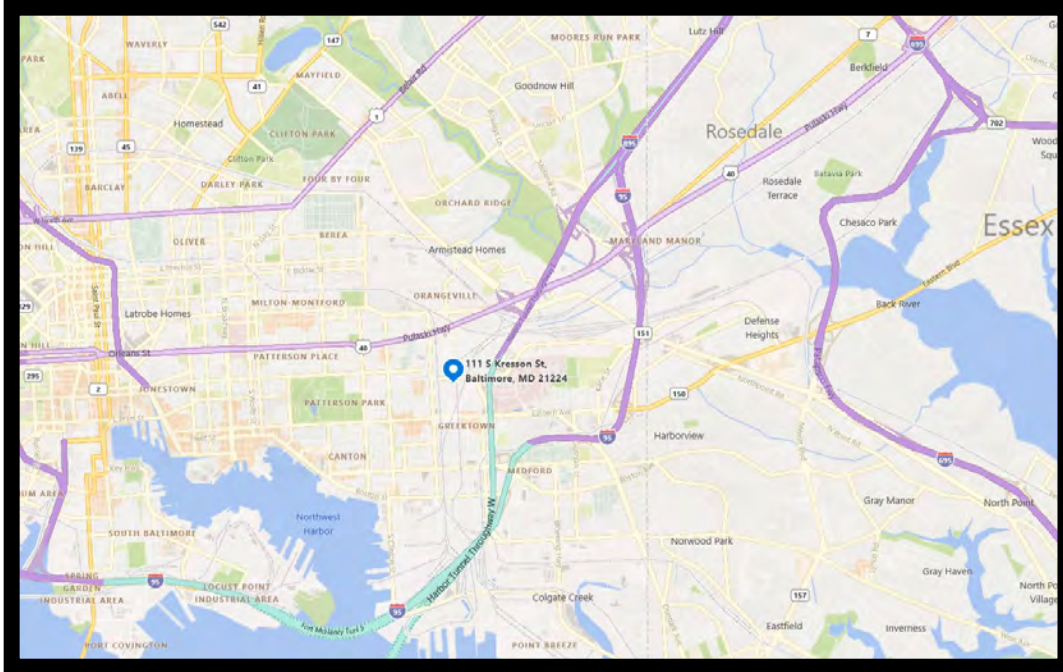


Gold And Company

Commercial Real Estate in the Baltimore Metropolitan Area

111 S. Kresson St. Baltimore, MD 21224

Map



Jim Chivers
Gold And Company, LLC
5601 Newbury St.
Baltimore, MD 21209

410.578.1300 (Office)

www.goldcommercial.net