



# GOLD AND COMPANY, LLC



**1800 Cherry Hill Rd. Baltimore, MD 21230**

## Gold And Company, LLC

5601 Newbury St.  
Baltimore, MD 21209

Jim Chivers  
443.928.7522 cell  
jim@goldcommercial.net

www.goldcommercial.net

- +/- 20,000 sf Manufacturing Building FOR SALE
- Crane Served (2 Ton and 1/2 Ton Crane)
- 4 Loading Dock Doors
- +/- 2,000 sf Office Building
- 20' - 25' Ceiling Height
- Heavy Power
- Opportunity and Hub Zone Qualified
- Call For More Information



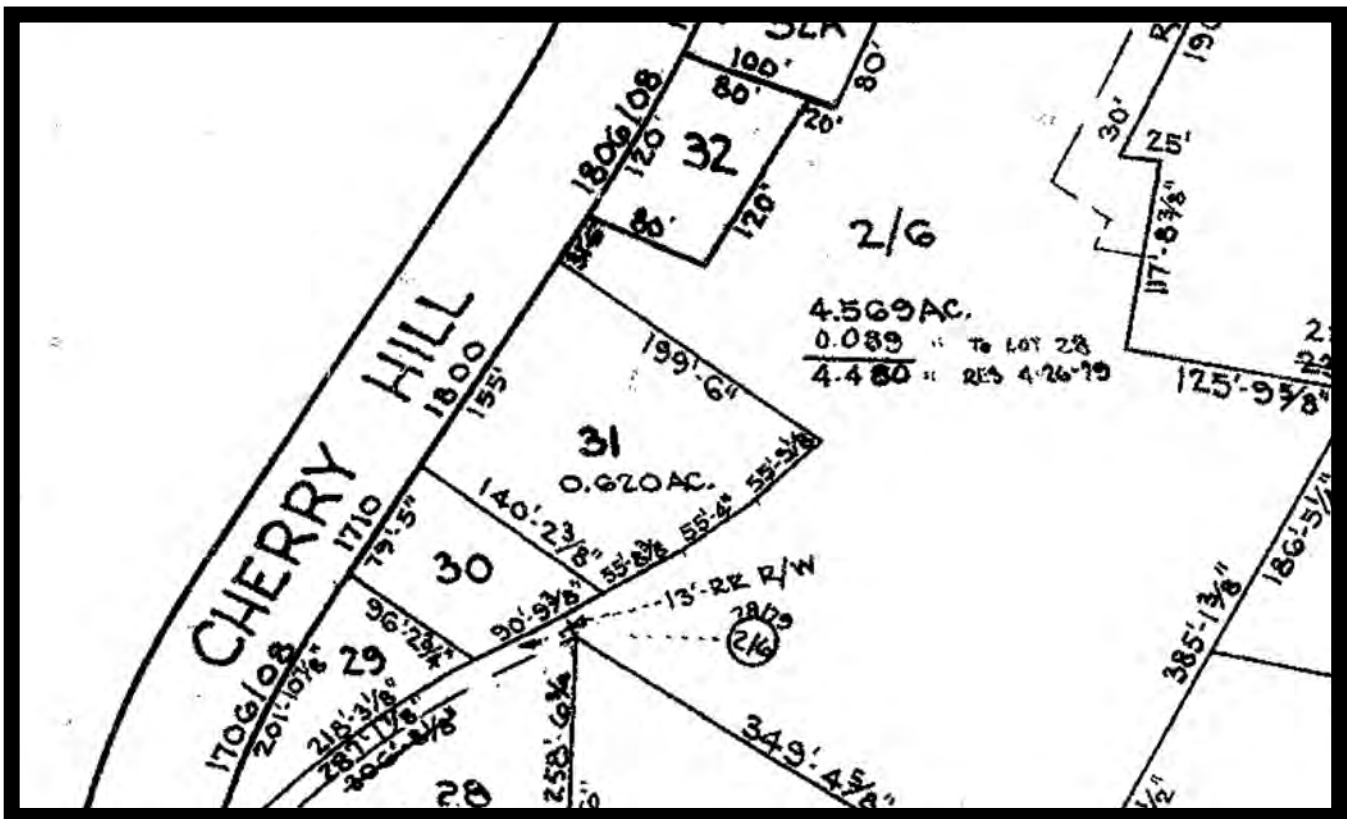
# Gold And Company

Commercial Real Estate in the Baltimore Metropolitan Area

**1800 Cherry Hill Rd. Baltimore, MD**

**Block Map**

**Lot 31**



**Jim Chivers**  
**Gold And Company, LLC**  
**5601 Newbury St.**  
**Baltimore, MD 21209**

**410.578.1300 (Office)**

**[www.goldcommercial.net](http://www.goldcommercial.net)**

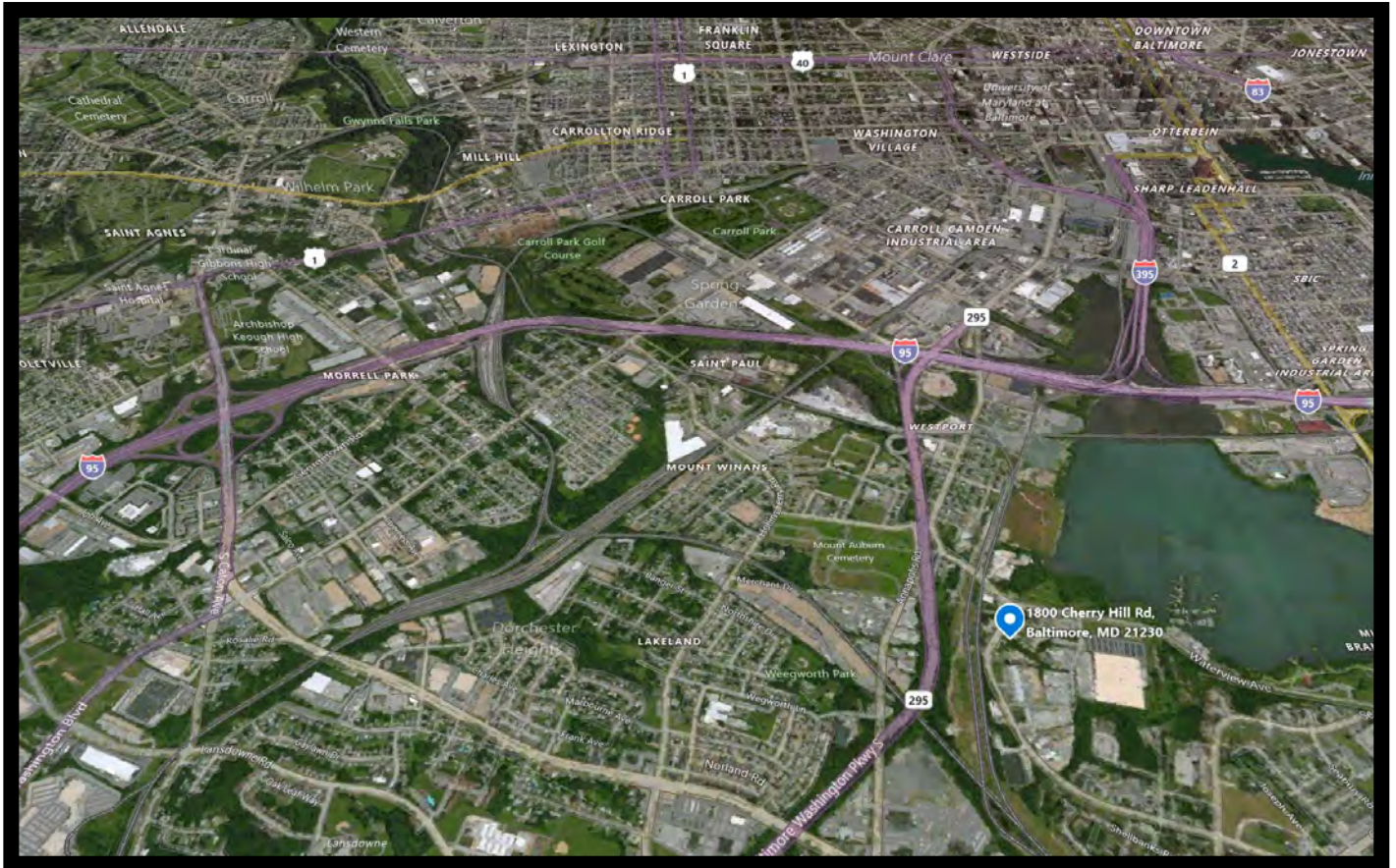


# Gold And Company

*Commercial Real Estate in the Baltimore Metropolitan Area*

**1800 Cherry Hill Rd. Baltimore, MD**

## Map



**Jim Chivers**  
**Gold And Company, LLC**  
**5601 Newbury St.**  
**Baltimore, MD 21209**

**410.578.1300 (Office)**

**[www.goldcommercial.net](http://www.goldcommercial.net)**