



GOLD AND COMPANY, LLC

WWW.GOLDCOMMERCIAL.NET

Commercial Real Estate in the Baltimore Metropolitan Area



1320 Bayard St. Baltimore, MD 21230

Gold And Company, LLC

5601 Newbury St.
Baltimore, MD 21209

Jim Chivers
443.928.7522 cell
jim@goldcommercial.net

www.goldcommercial.net

- **Contractors Storage and Maintenance Facility FOR SALE**
- **+/- 4,000 sf Drive-Thru Maintenance Building**
- **1.3 Acres**
- **3 Total Parcels**
- **I-1 and I-2 Zoning—Industrial Baltimore City**
- **Hub and Enterprise Zone Qualified**
- **Located in the Carroll Camden Industrial Submarket**
- **Excellent Access to I-95**
- **Call for More Information**

This property offering is subject to change without notice. All information is deemed reliable but not guaranteed.

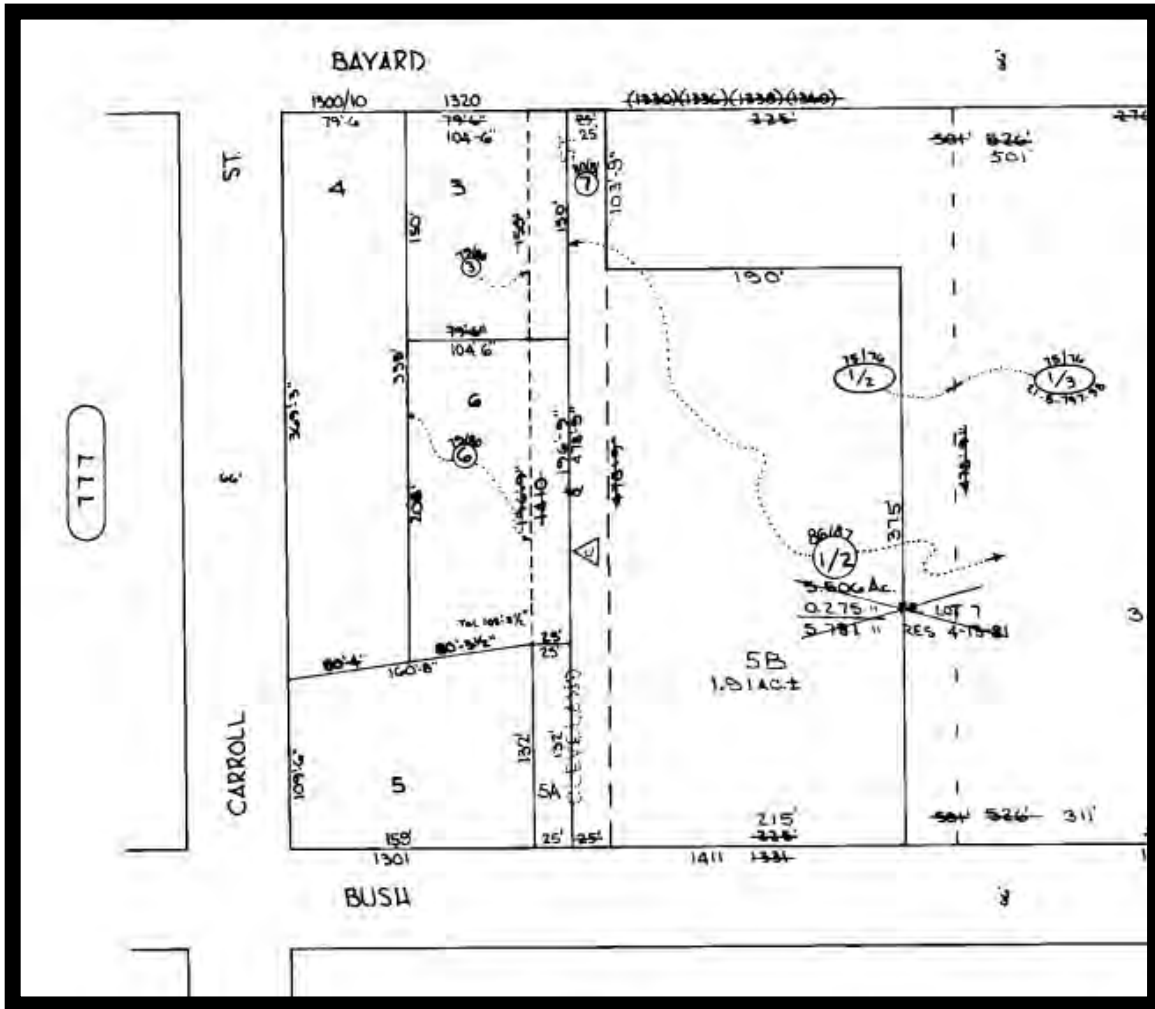


Gold And Company

Commercial Real Estate in the Baltimore Metropolitan Area

1320 Bayard St. Baltimore, MD 21230

Block Map Lots 3, 6, and 5



Jim Chivers
Gold And Company, LLC
5601 Newbury St.
Baltimore, MD 21209

410.578.1300 (Office)

www.goldcommercial.net

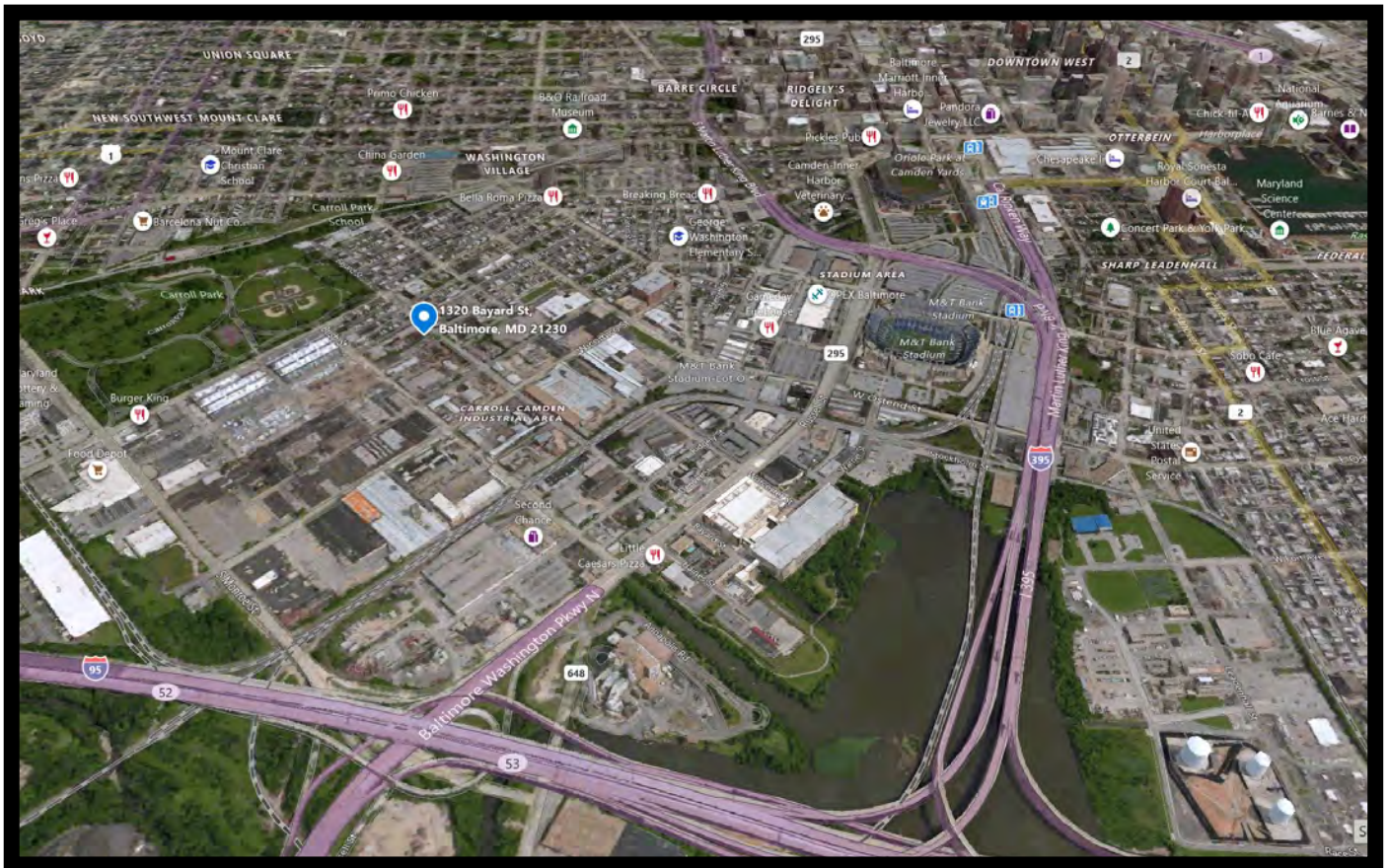


Gold And Company

Commercial Real Estate in the Baltimore Metropolitan Area

1320 Bayard St. Baltimore, MD 21230

Map



Jim Chivers
Gold And Company, LLC
5601 Newbury St.
Baltimore, MD 21209

410.578.1300 (Office)

www.goldcommercial.net