



GOLD AND COMPANY, LLC

Commercial Real Estate in the Baltimore Metropolitan Area



115 S. Kresson St. Baltimore, MD 21224

Jim Chivers

Gold and Company

443.928.7522 cell

jim@goldcommercial.net

www.goldcommercial.net

- **East Baltimore Contractors Yard Available**
- **For Lease**
- **2.01 Total Acres**
- **+/- 4,500 sf Drive-Thru Maintenance Warehouse w/ 16' Ceiling Height—3 Phase Power**
- **+/- 4,000 sf Freestanding Office Building**
- **I-2 Zoning—Heavy Industrial**
- **Baltimore City**
- **Enterprise and Hub Zone Qualified**
- **Close Access to the Port of Baltimore**
- **Excellent Access to I-95 and I-895**
- **Call For More Information**

This property offering is subject to change without notice. All information is deemed reliable but not guaranteed.

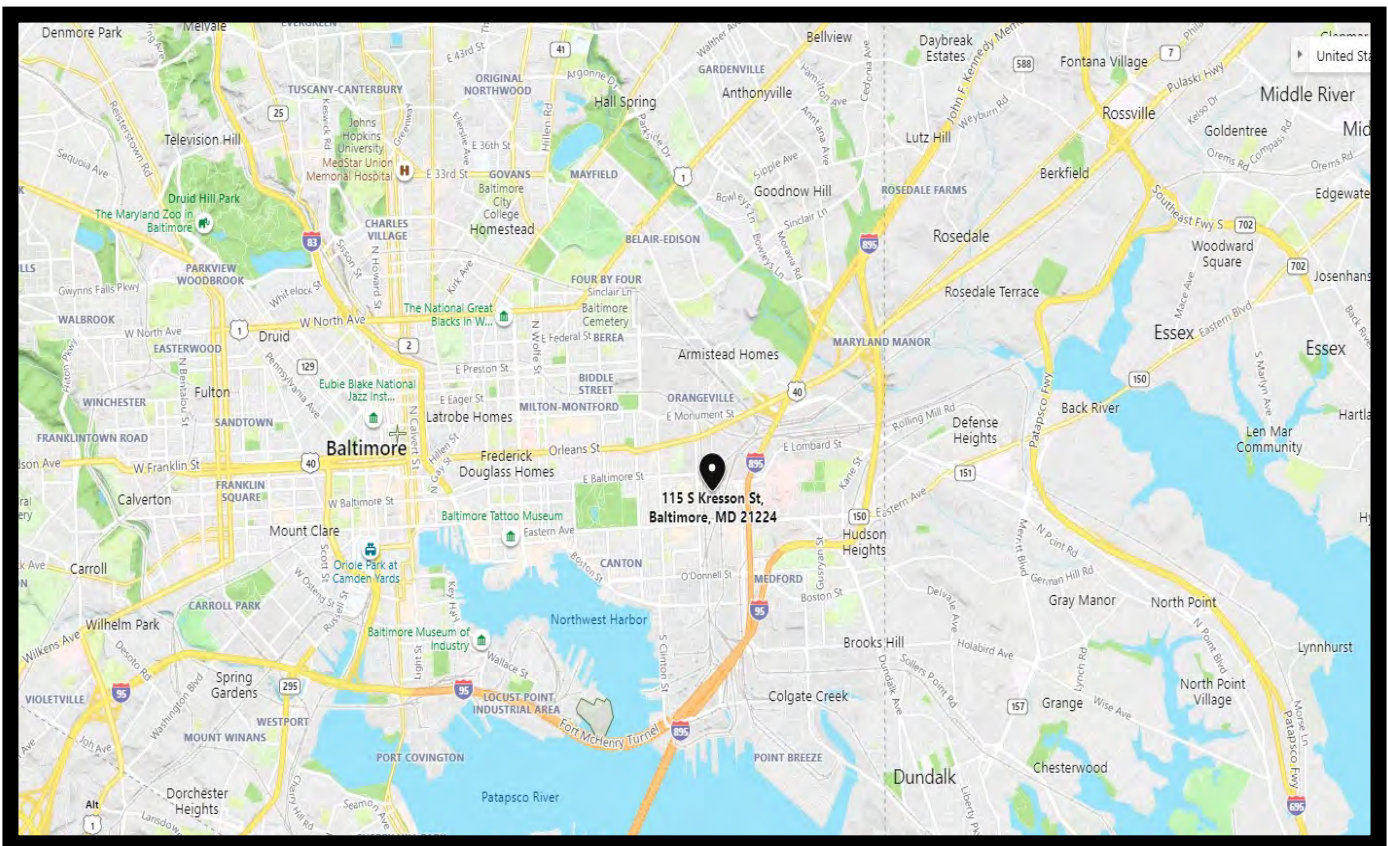


Gold And Company

Commercial Real Estate in the Baltimore Metropolitan Area

115 S. Kresson St. Baltimore, MD 21224

Area Map



Jim Chivers
Gold And Company, LLC
5601 Newbury St.
Baltimore, MD 21209

410.578.1300 (Office)

www.goldcommercial.net

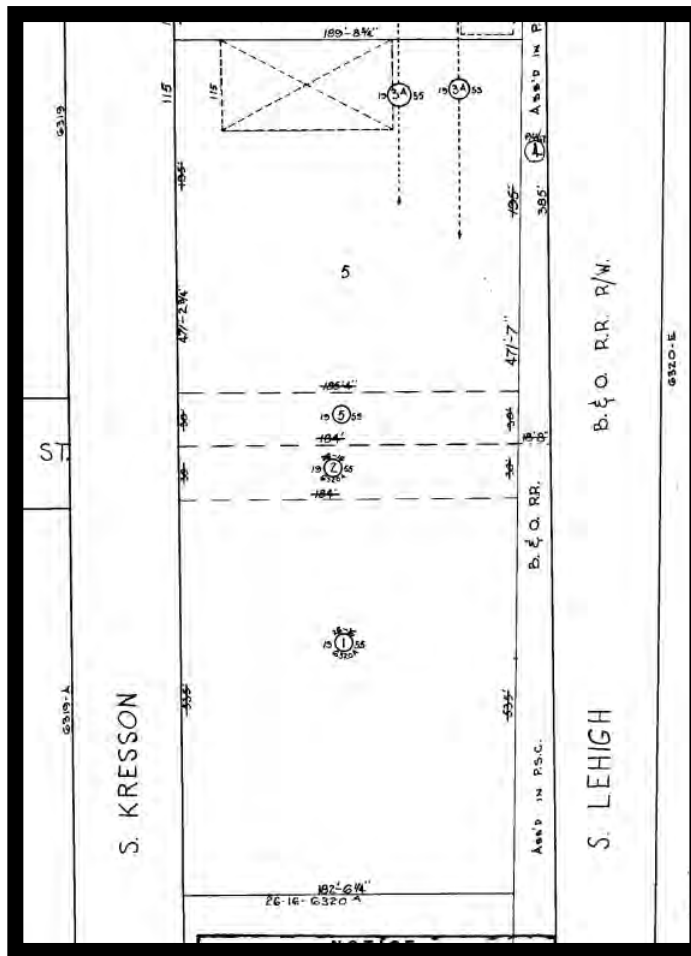


Gold And Company

Commercial Real Estate in the Baltimore Metropolitan Area

115 S. Kresson St. Baltimore, MD 21224

Block Map



Jim Chivers
Gold And Company, LLC
5601 Newbury St.
Baltimore, MD 21209

410.578.1300 (Office)

www.goldcommercial.net