



# GOLD AND COMPANY, LLC

WWW.GOLDCOMMERCIAL.NET

*Commercial Real Estate in the Baltimore Metropolitan Area*



**1320 Bayard St. Baltimore, MD 21230**

## Gold And Company, LLC

5601 Newbury St.  
Baltimore, MD 21209

Jim Chivers  
443.928.7522 cell  
jim@goldcommercial.net

www.goldcommercial.net

- **Contractors Storage and Maintenance Facility FOR SALE**
- **+/- 4,000 sf Drive-Thru Building**
- **1.3 Acres**
- **3 Total Parcels**
- **I-1 and I-2 Zoning—Industrial Baltimore City**
- **Hub and Enterprise Zone Qualified**
- **Located in the Carroll Camden Industrial Submarket**
- **Excellent Access to I-95**
- **Call for More Information**

This property offering is subject to change without notice. All information is deemed reliable but not guaranteed.

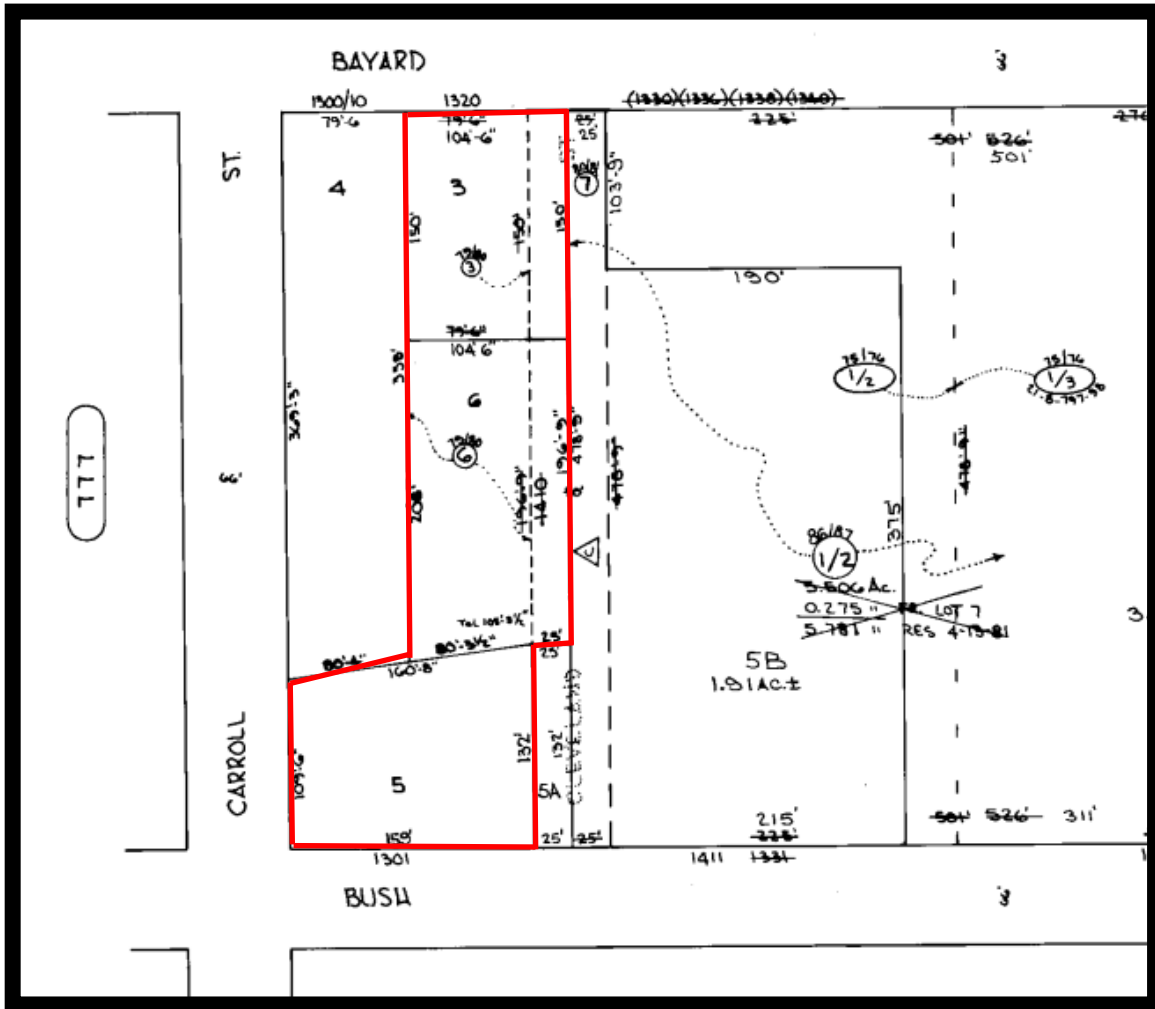


# Gold And Company

Commercial Real Estate in the Baltimore Metropolitan Area

**1320 Bayard St. Baltimore, MD 21230**

## Block Map Lots 3, 6, and 5



**Jim Chivers**  
**Gold And Company, LLC**  
**5601 Newbury St.**  
**Baltimore, MD 21209**

**410.578.1300 (Office)**

**[www.goldcommercial.net](http://www.goldcommercial.net)**



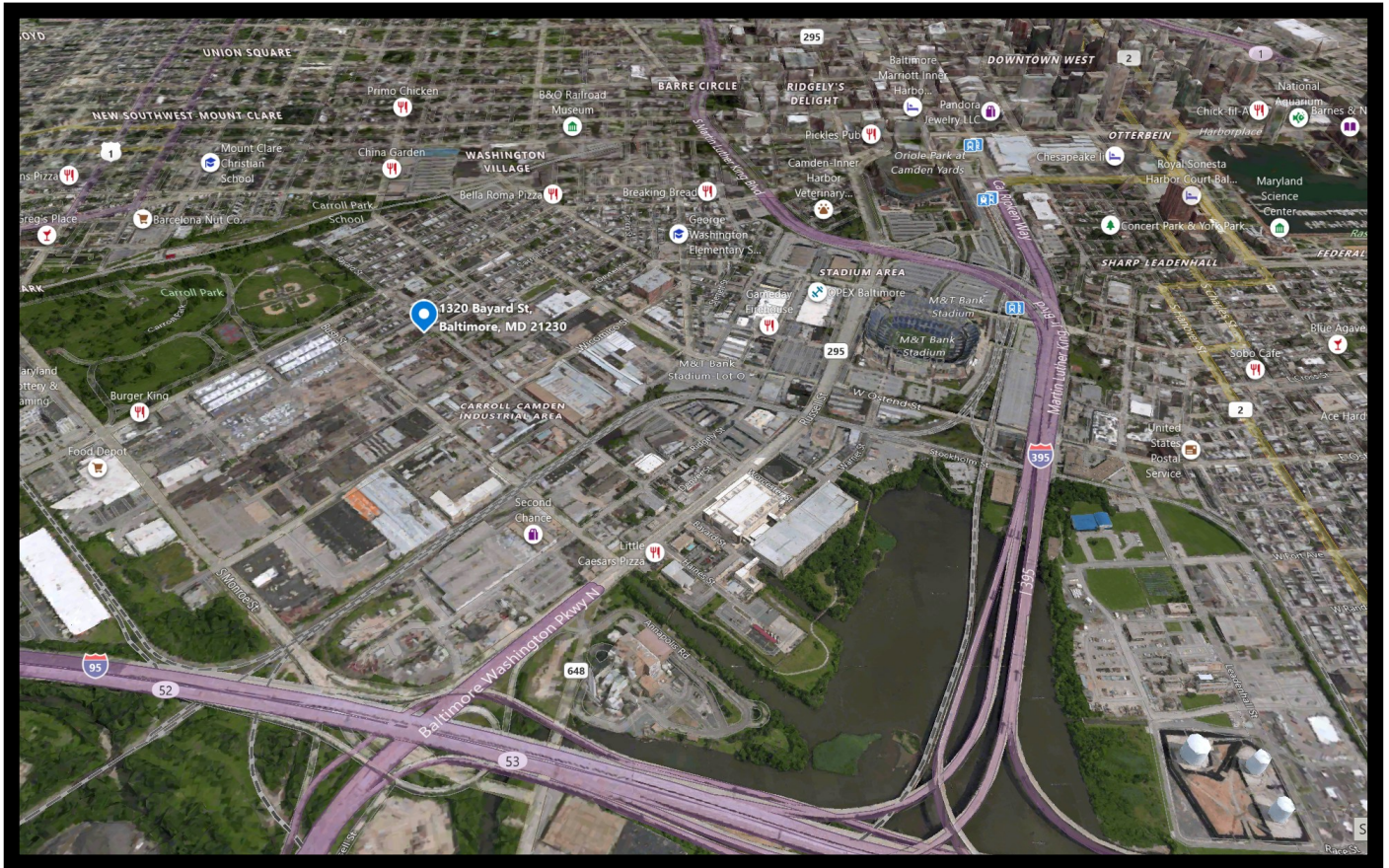


# Gold And Company

*Commercial Real Estate in the Baltimore Metropolitan Area*

**1320 Bayard St. Baltimore, MD 21230**

## Map



**Jim Chivers**  
**Gold And Company, LLC**  
**5601 Newbury St.**  
**Baltimore, MD 21209**

**410.578.1300 (Office)**

**[www.goldcommercial.net](http://www.goldcommercial.net)**