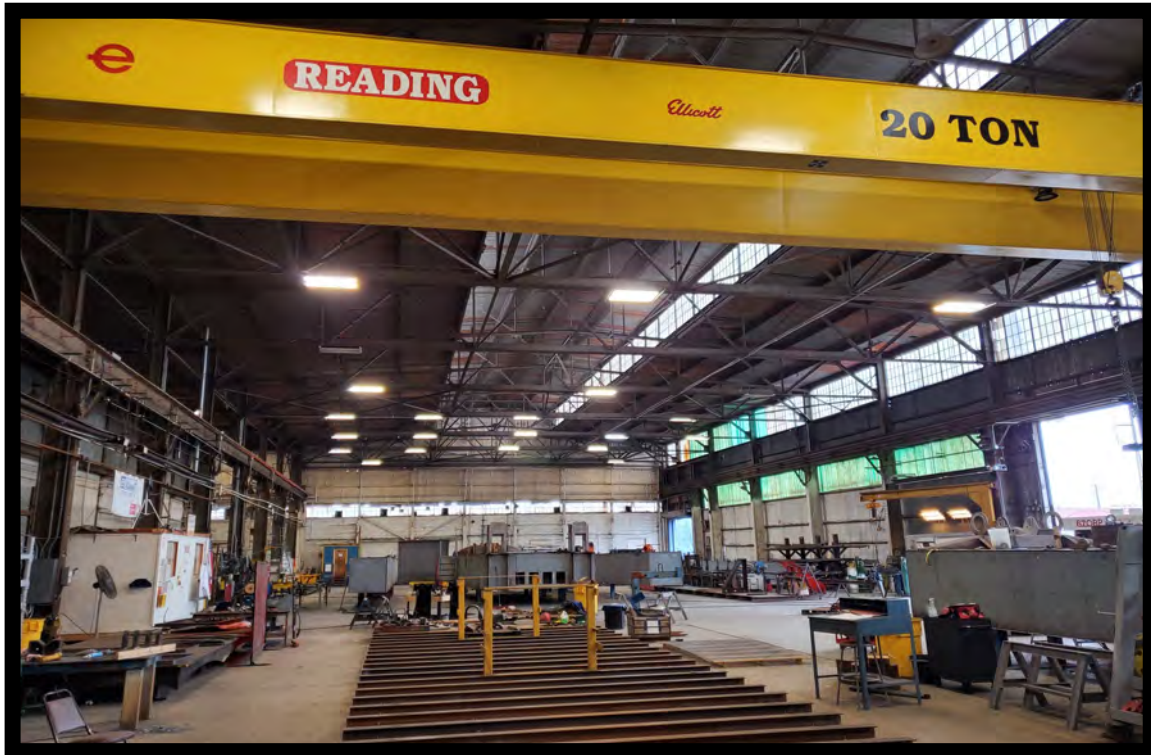




GOLD AND COMPANY, LLC



1600 Bush St. Baltimore, MD 21230

Gold And Company, LLC

5601 Newbury St.
Baltimore, MD 21209

Jim Chivers
443.928.7522 cell
jim@goldcommercial.net

- **CRANE SERVED WAREHOUSE AVAILABLE FOR LEASE**
- **29,000 SF Available**
- **20-Ton Crane Included**
- **Clear Span Warehouse**
- **30+ Ft. Clear Height**
- **3 Drive-In Doors**
- **Exterior Dock Loading Well**
- **LED Lighting Throughout**
- **I-2 Zoning—Baltimore City**
- **Carroll Camden Industrial Area**
- **Excellent Access to I-95**
- **Call For More Information**

This property offering is subject to change without notice. All information is deemed reliable but not guaranteed.

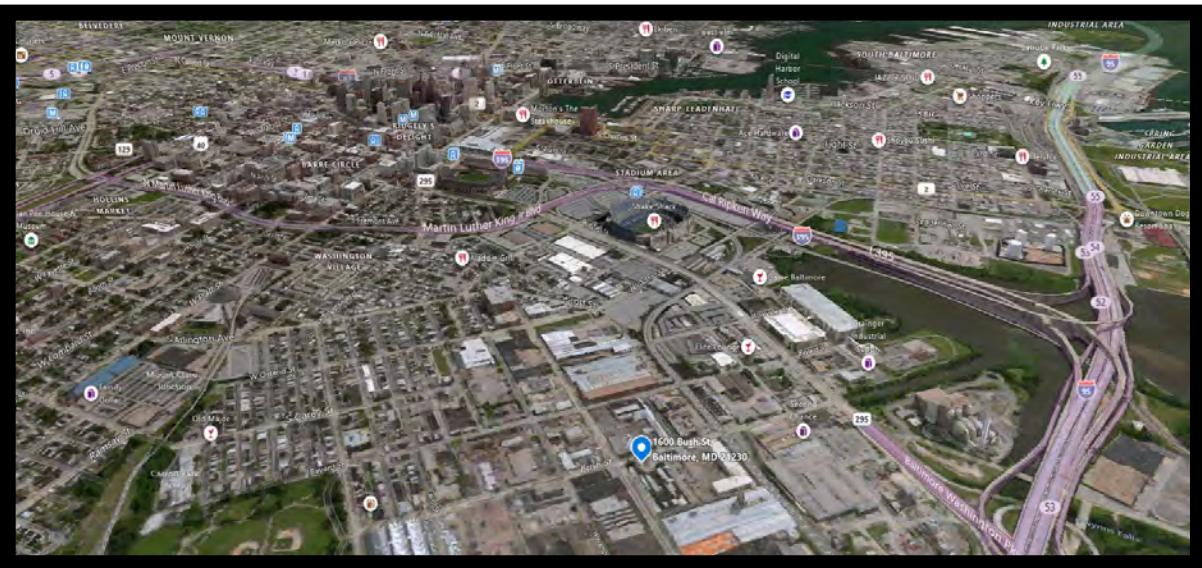


Gold And Company

Commercial Real Estate in the Baltimore Metropolitan Area

1600 Bush St. Baltimore, MD 21230

AERIAL AND MAPS



Jim Chivers
Gold And Company, LLC
5601 Newbury St.
Baltimore, MD 21209

410.578.1300 (Office)

www.goldcommercial.net

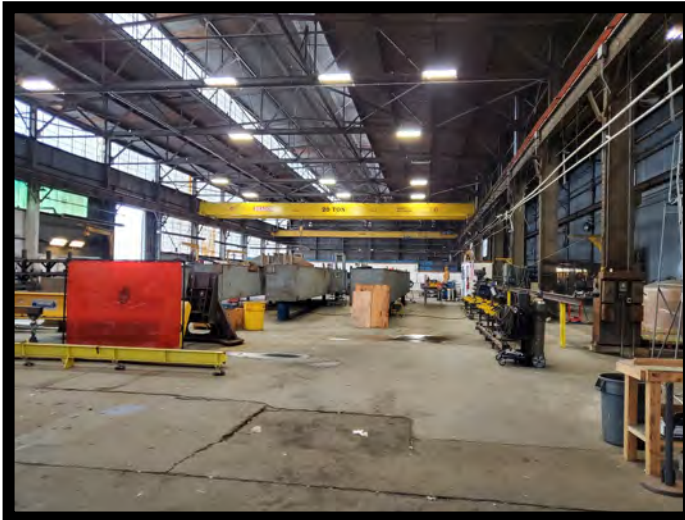
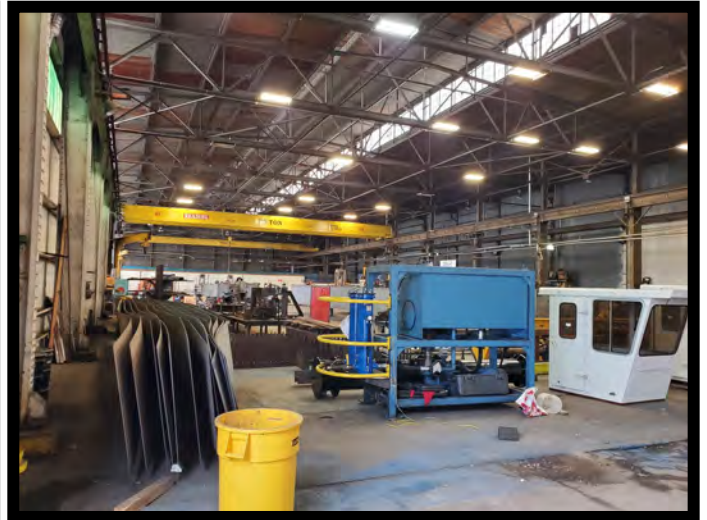


Gold And Company

Commercial Real Estate in the Baltimore Metropolitan Area

1600 Bush St. Baltimore, MD 21230

ADDITIONAL PICTURES



Jim Chivers
Gold And Company, LLC
5601 Newbury St.
Baltimore, MD 21209

410.578.1300 (Office)

www.goldcommercial.net