



# **GOLD AND COMPANY, LLC**

**WWW.GOLDCOMMERCIAL.NET**

***Commercial Real Estate in the Baltimore Metropolitan Area***



**1331 Seling Ave. Rosedale, MD 21237**

## **Gold And Company, LLC**

**5601 Newbury St.  
Baltimore, MD 21209**

***For More Information:***

**Jim Chivers  
443.928.7522 cell  
jim@goldcommercial.net**

**Will McCullough, SIOR, CCIM  
410.292.2985 cell  
will@goldcommercial.net**

**www.goldcommercial.net**

- **Banquet Hall Facility Available FOR SALE**
- **+/- 9,300 sf Building**
- **Includes Outdoor Pavilion**
- **Large Paved / Parking Area**
- **7.88 Acres**
- **Open Floor Plate w/ Private Rooms / Offices**
- **Central Heat and Air**
- **Public Water and Septic**
- **Contact For More Information**

This property offering is subject to change without notice. All information is deemed reliable but not guaranteed.





***Gold And Company***

***Commercial Real Estate in the Baltimore Metropolitan Area***

**1331 Seling Ave. Rosedale, MD 21237**

**Aerial**



**Jim Chivers / Will McCullough  
Gold And Company, LLC  
5601 Newbury St.  
Baltimore, MD 21209**

**410.578.1300 (Office)**

**[www.goldcommercial.net](http://www.goldcommercial.net)**

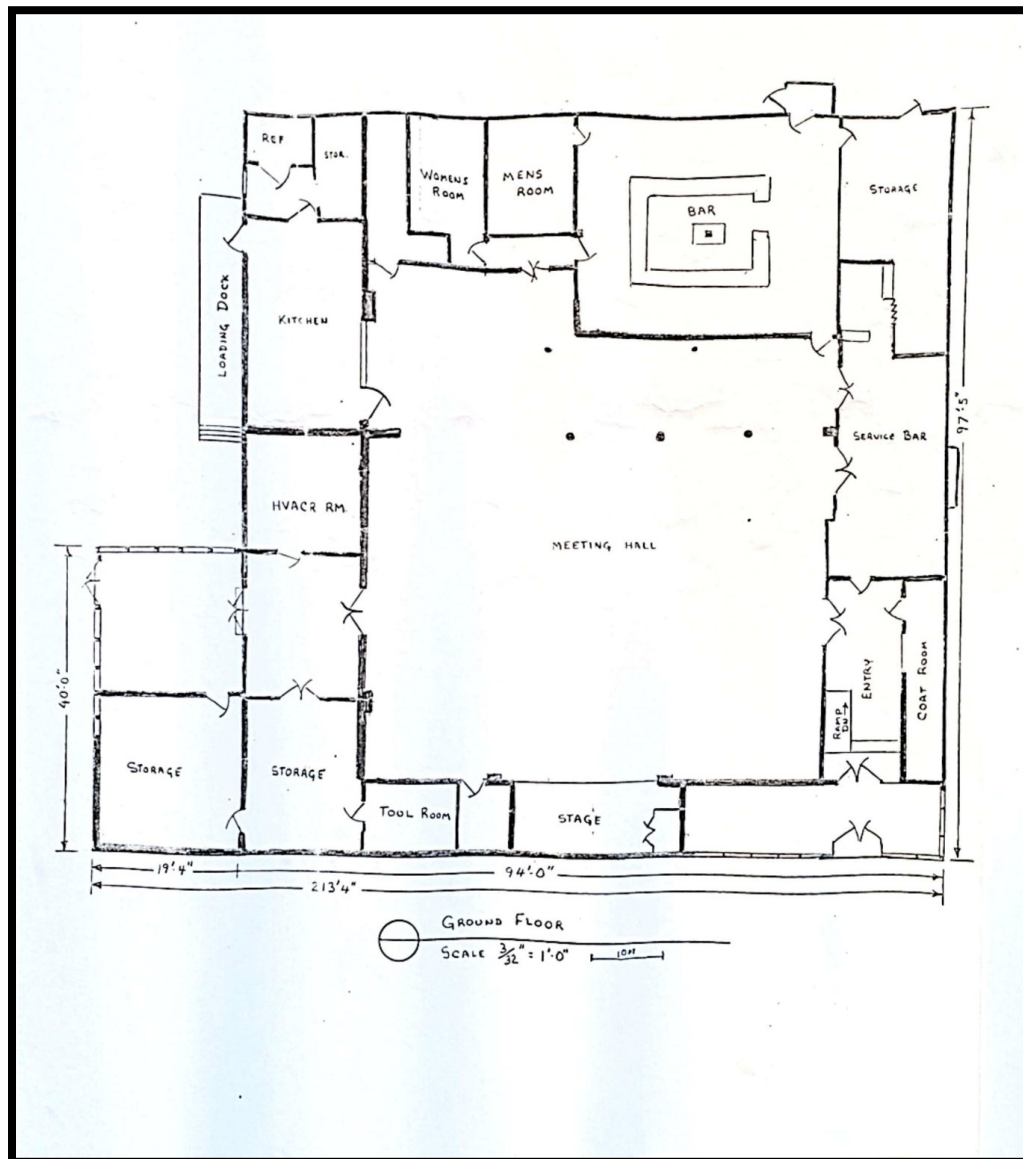


# **Gold And Company**

**Commercial Real Estate in the Baltimore Metropolitan Area**

**1331 Seling Ave. Rosedale, MD 21237**

## **Building Layout**



**Jim Chivers / Will McCullough**  
**Gold And Company, LLC**  
**5601 Newbury St.**  
**Baltimore, MD 21209**

**410.578.1300 (Office)**

**[www.goldcommercial.net](http://www.goldcommercial.net)**



