



GOLD AND COMPANY, LLC

Commercial Real Estate in the Baltimore Metropolitan Area



6711 Quad Ave. Baltimore, MD 21237

Jim Chivers

Gold and Company

443.928.7522 cell

jim@goldcommercial.net

www.goldcommercial.net

- **East Baltimore Industrial Property Available**
- **Located in the Pulaski Industrial Area**
- **2.0 Total Acres**
- **+/- 2,100 sf Office and Warehouse Building**
- **1 Drive-In Bay**
- **I-2 Zoning—Heavy Industrial**
- **Baltimore City**
- **Close Access to the Port of Baltimore**
- **Excellent Access to I-95**
- **Call For More Information**

This property offering is subject to change without notice. All information is deemed reliable but not guaranteed.

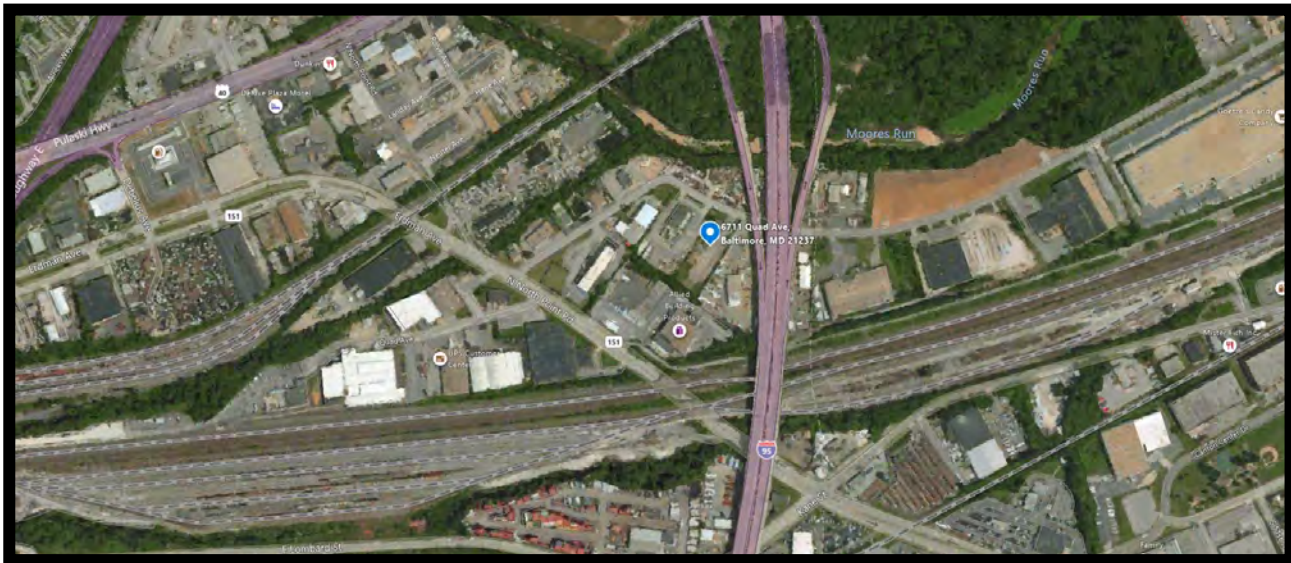
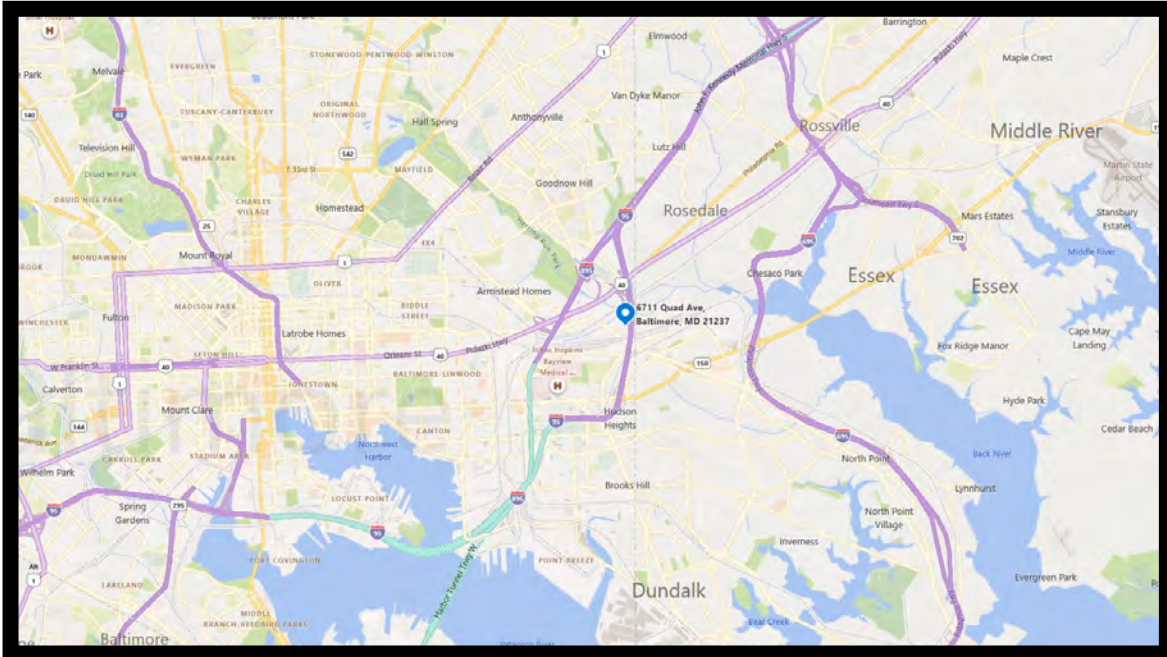


Gold And Company

Commercial Real Estate in the Baltimore Metropolitan Area

6711 Quad Ave. Baltimore, MD 21237

Map and Aerial



Jim Chivers
Gold And Company, LLC
5601 Newbury St.
Baltimore, MD 21209

410.578.1300 (Office)

www.goldcommercial.net

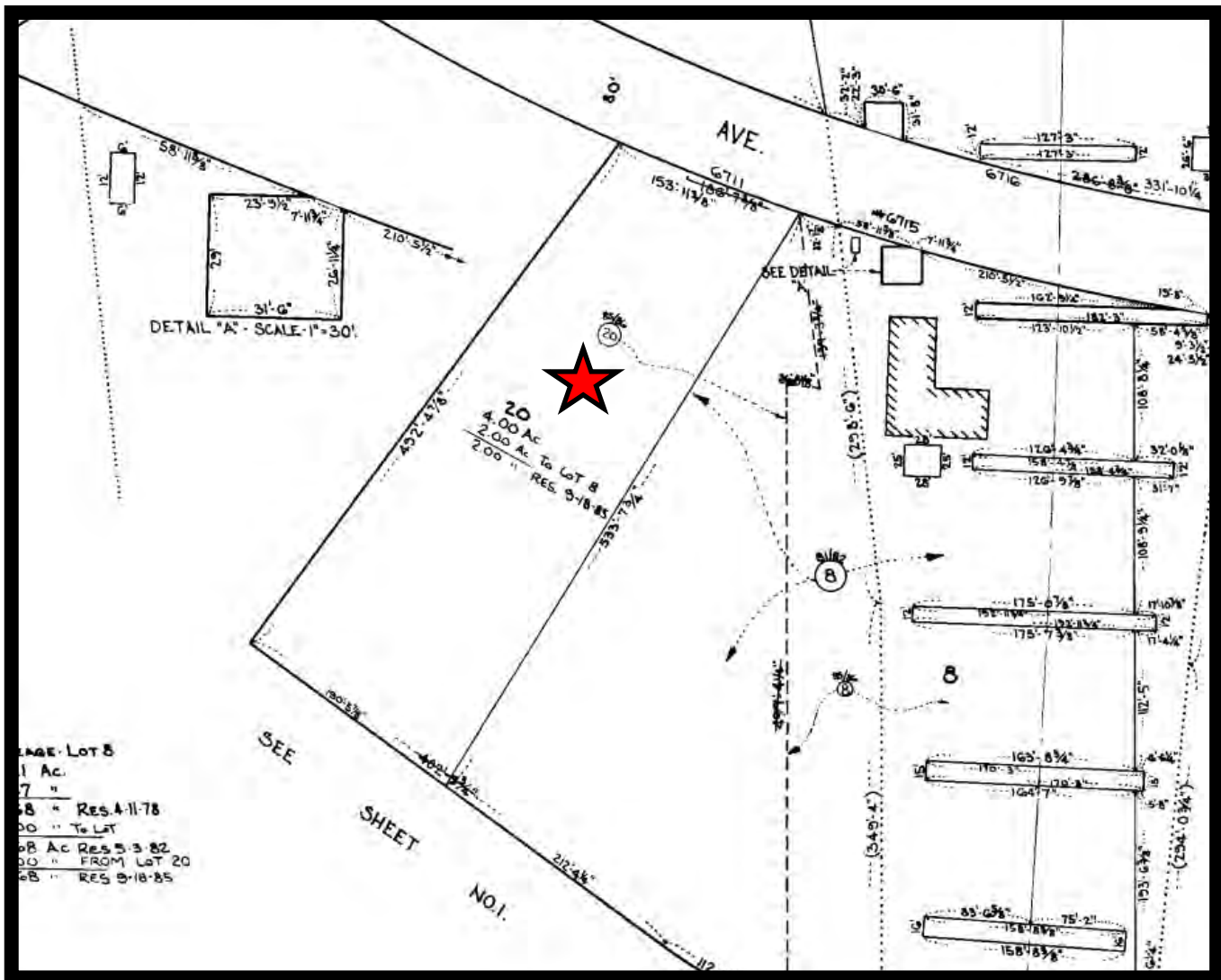


Gold And Company

Commercial Real Estate in the Baltimore Metropolitan Area

6711 Quad Ave. Baltimore, MD 21237

Block Map



Jim Chivers
Gold And Company, LLC
5601 Newbury St.
Baltimore, MD 21209

410.578.1300 (Office)

www.goldcommercial.net