



# **GOLD AND COMPANY, LLC**

***Commercial Real Estate in the Baltimore Metropolitan Area***



## **1103 N Washington St. Baltimore, MD 21213**

**Jim Chivers**

**Gold and Company**

**443.928.7522 cell**

**[jim@goldcommercial.net](mailto:jim@goldcommercial.net)**

**[www.goldcommercial.net](http://www.goldcommercial.net)**

- **East Baltimore Building Available FOR SALE**
- **Built in 1875**
- **One of Baltimore's Earliest Remaining Warehouses**
- **+/- 27,000 sf on Three Levels**
- **+/- 12,000 sf Land Area**
- **Off Street Parking**
- **Located in an Opportunity Zone**
- **Fully Sprinklered Facility**
- **1 Drive-In Door w/ a Dock Platform Loading Area**
- **3 Phase Power**
- **Call For More Information**

This property offering is subject to change without notice. All information is deemed reliable but not guaranteed.



# Gold And Company

*Commercial Real Estate in the Baltimore Metropolitan Area*

**1103 N Washington St. Baltimore, MD 21213**

## Birds Eye View



**Jim Chivers**  
**Gold And Company, LLC**  
**5601 Newbury St.**  
**Baltimore, MD 21209**

**410.578.1300 (Office)**

**[www.goldcommercial.net](http://www.goldcommercial.net)**



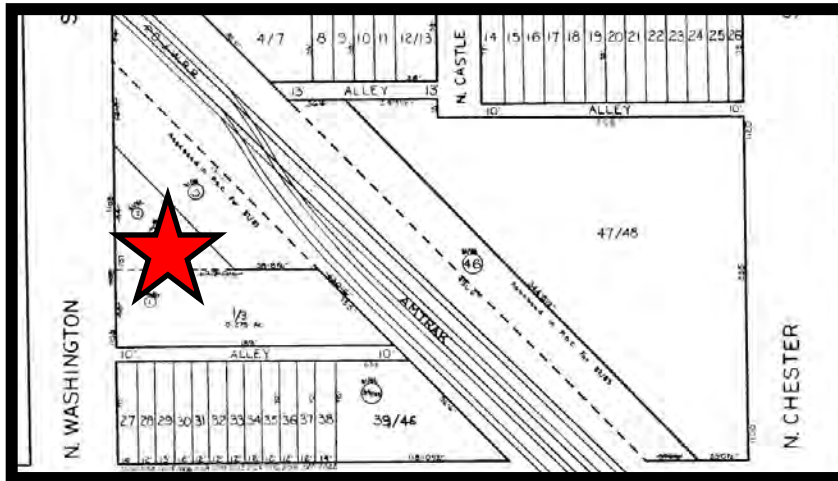


# Gold And Company

*Commercial Real Estate in the Baltimore Metropolitan Area*

**1103 N Washington St. Baltimore, MD**

## Block Map and Interior Pictures



**Jim Chivers**  
**Gold And Company, LLC**  
**5601 Newbury St.**  
**Baltimore, MD 21209**

**410.578.1300 (Office)**

**[www.goldcommercial.net](http://www.goldcommercial.net)**