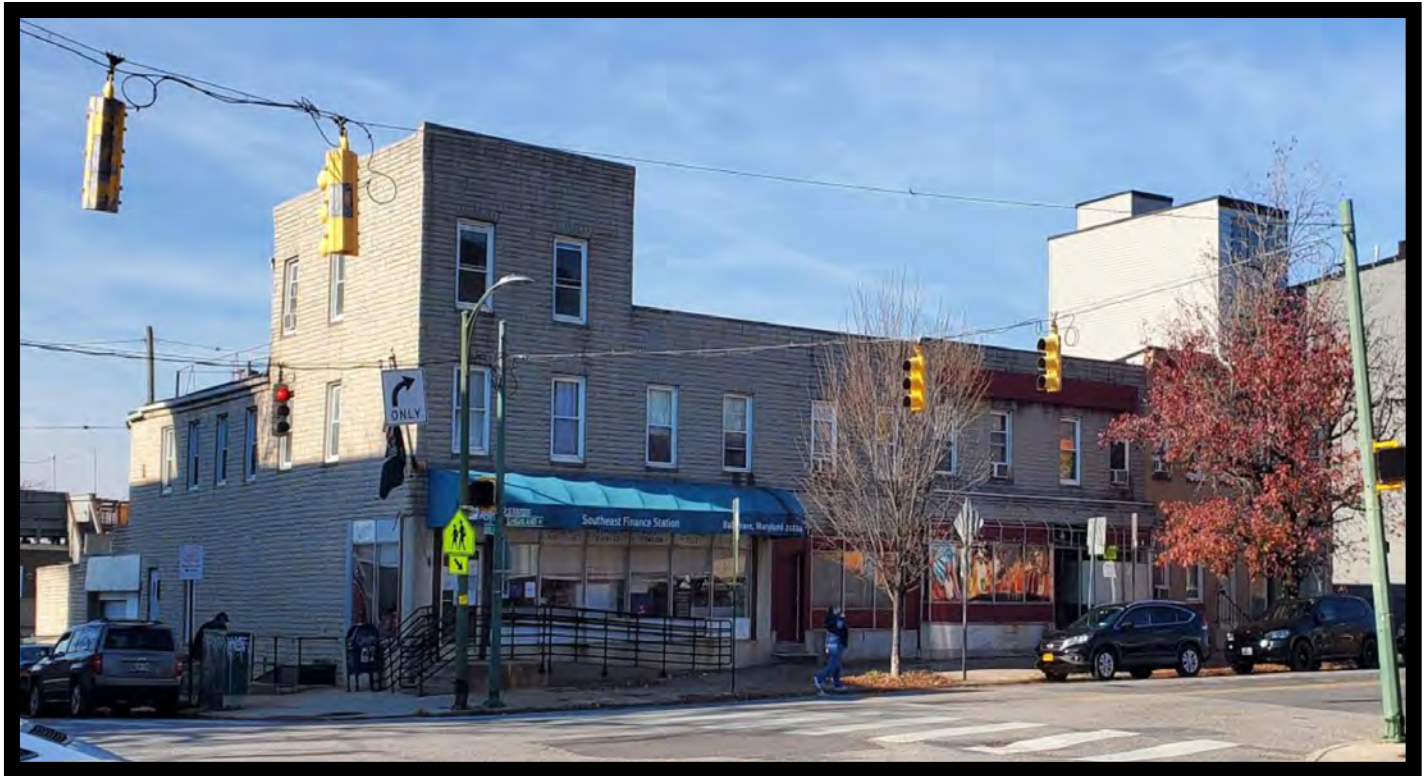




GOLD AND COMPANY, LLC



328-332 South Highland Ave. Baltimore, MD 21224

Gold And Company, LLC

**5601 Newbury St.
Baltimore, MD 21209**

**Jim Chivers
443.928.7522 cell
jim@goldcommercial.net**

www.goldcommercial.net

- **Development Opportunity Available at the Signalized Intersection of S. Highland Ave. and Bank St.**
- **Situated in the Heart of Highlandtown**
- **+/- 15,000 sf Total Building**
- **9,200 sf Lot Size**
- **3 Separate Real Estate Parcels**
- **C-1 Zoning**
- **Partially Leased with the USPS**
- **Dense Population Throughout the Highlandtown, Patterson Park and Canton Neighborhoods**
- **Call For More Information**

This property offering is subject to change without notice. All information is deemed reliable but not guaranteed.

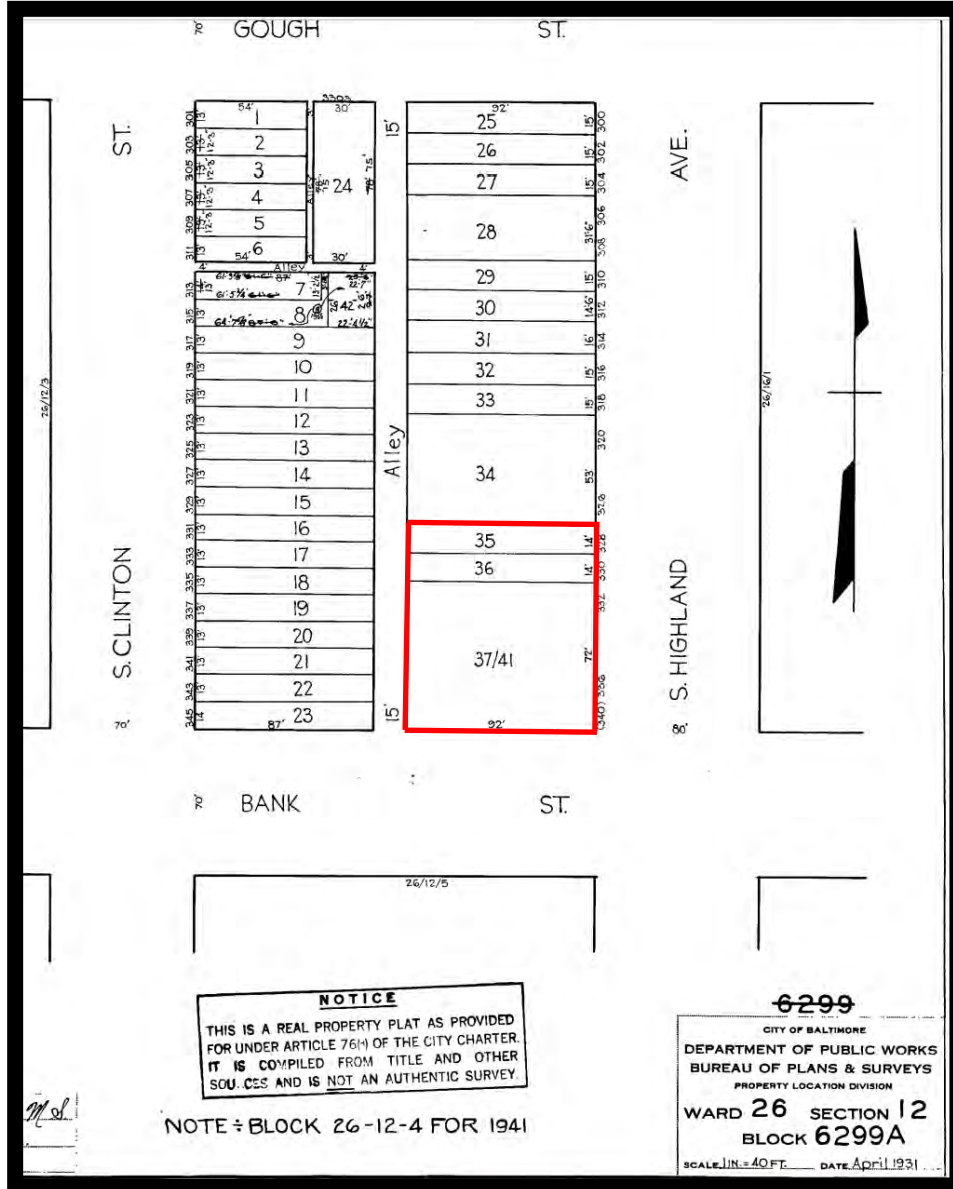


Gold And Company

Commercial Real Estate in the Baltimore Metropolitan Area

328-332 South Highland Ave. Baltimore, MD

Block Map



Jim Chivers
Gold And Company, LLC
5601 Newbury St.
Baltimore, MD 21209

410.578.1300 (Office)

www.goldcommercial.net



Gold And Company

Commercial Real Estate in the Baltimore Metropolitan Area

328-332 South Highland Ave. 21224

Map



Jim Chivers
Gold And Company, LLC
5601 Newbury St.
Baltimore, MD 21209

410.578.1300 (Office)

www.goldcommercial.net

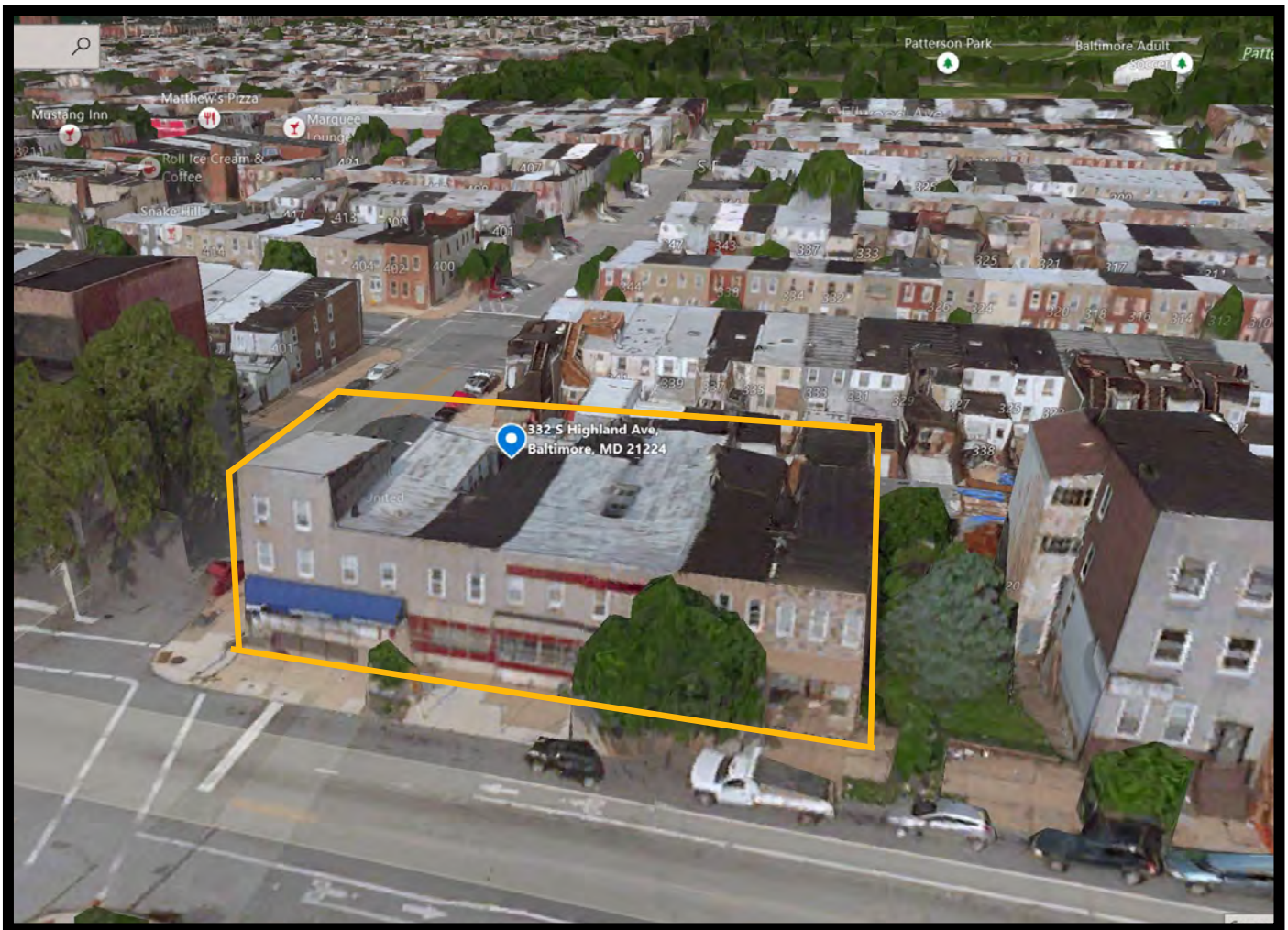


Gold And Company

Commercial Real Estate in the Baltimore Metropolitan Area

328-332 South Highland Ave. 21224

Birds Eye View



Jim Chivers
Gold And Company, LLC
5601 Newbury St.
Baltimore, MD 21209

410.578.1300 (Office)

www.goldcommercial.net