



GOLD AND COMPANY, LLC



3030 Nieman Ave. Baltimore, MD 21230

Gold And Company, LLC

**5601 Newbury St.
Baltimore, MD 21209**

**Jim Chivers
jim@goldcommercial.net
443.928.7522 Cell**

**Office: 410.578.1300
www.goldcommercial.net**

- **FLEX PROPERTY AVAILABLE FOR LEASE**
- **15,150 SF**
- **Dock and Drive-In Loading**
- **+/- 3,000 sf Office Area**
- **+/- 16' Clear Ceiling Height**
- **Well Maintained**
- **Professional Managed Facilities**
- **I-2 Zoning— Heavy Industrial Zoning**
- **Close Access to all Main Interstates**
- **Sublease until April 2022**
- **Call For More Information**

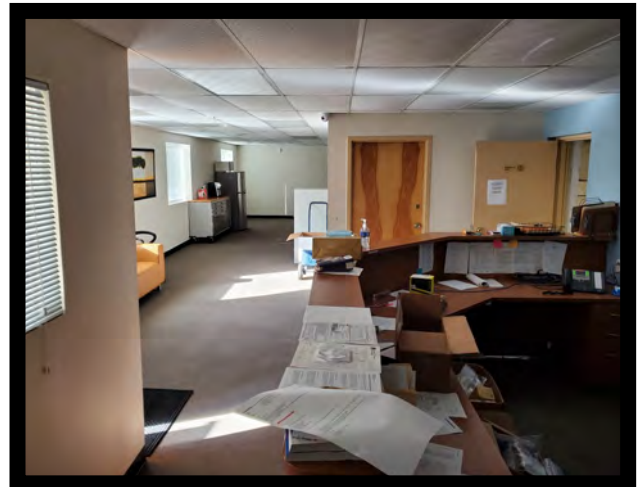
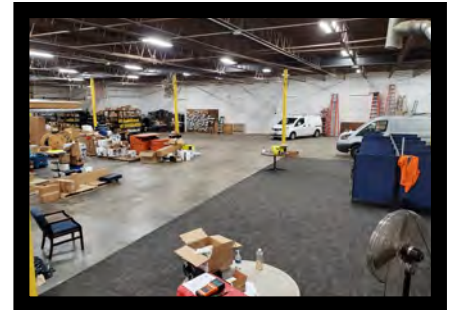
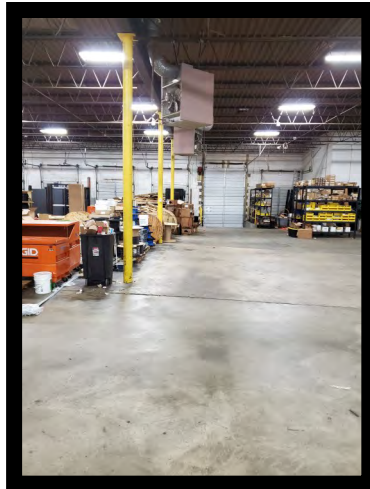
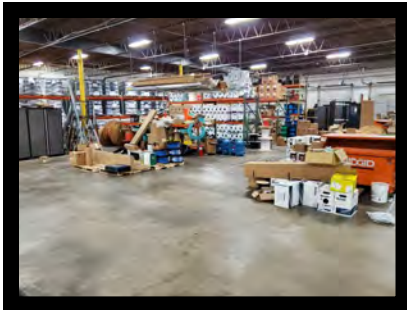


Gold And Company

Commercial Real Estate in the Baltimore Metropolitan Area

3030 Nieman Ave. Baltimore, MD 21230

Additional Pictures



Jim Chivers
Gold And Company, LLC
5601 Newbury St.
Baltimore, MD 21209

www.goldcommercial.net
410.578.1300

This property offering is subject to change without notice. All information is deemed reliable but not guaranteed.

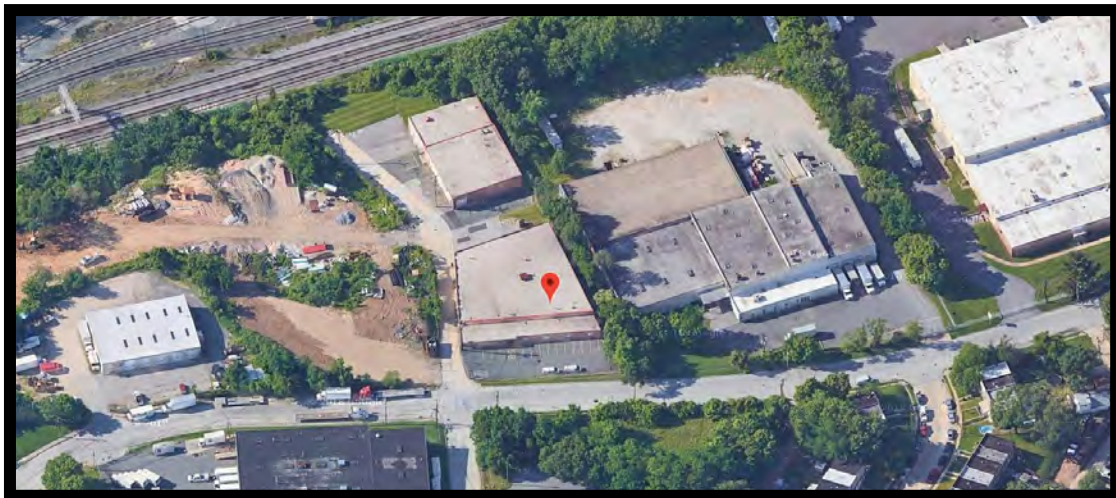
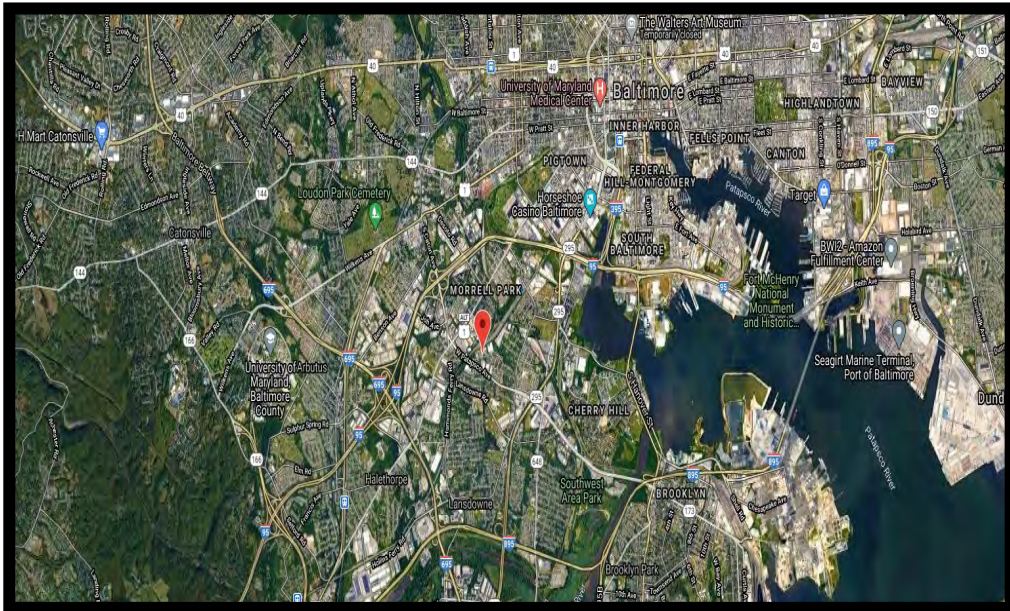


Gold And Company

Commercial Real Estate in the Baltimore Metropolitan Area

3030 Nieman Ave. Baltimore, MD 21230

Map / Aerial



Jim Chivers
Gold And Company, LLC
5601 Newbury St.
Baltimore, MD 21209

www.goldcommercial.net
410.578.1300

This property offering is subject to change without notice. All information is deemed reliable but not guaranteed.