



GOLD AND COMPANY, LLC



1450 Wiseburg Rd, White Hall, MD 21161

Gold and Company, LLC

**5601 Newbury St.
Baltimore, MD 21209**

Alex Simone
443.845.4413
[**Alex@goldcommercial.net**](mailto:Alex@goldcommercial.net)

Mitch Gold
410.456.2492
[**Mitch@goldcommercial.net**](mailto:Mitch@goldcommercial.net)

Office: 410.578.1300
www.goldcommercial.net

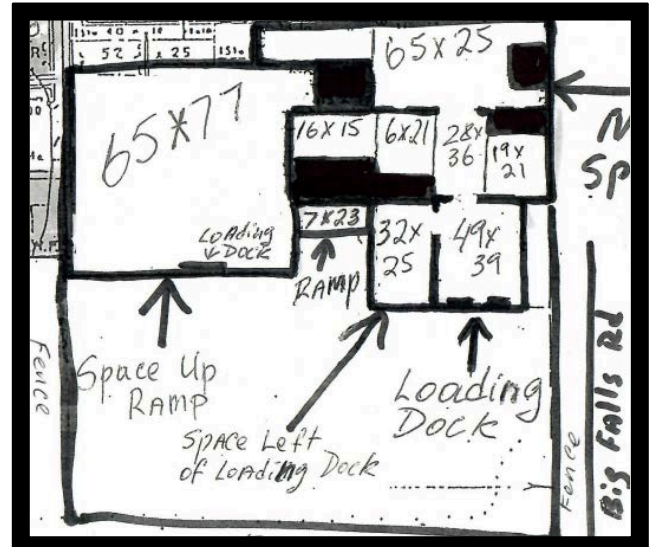
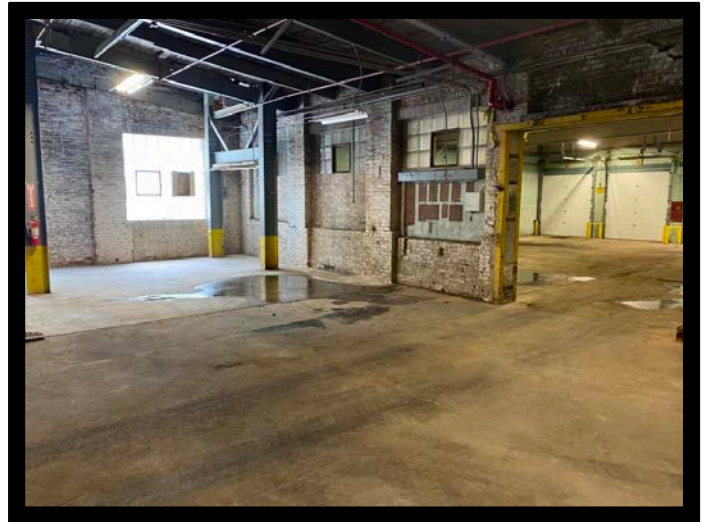
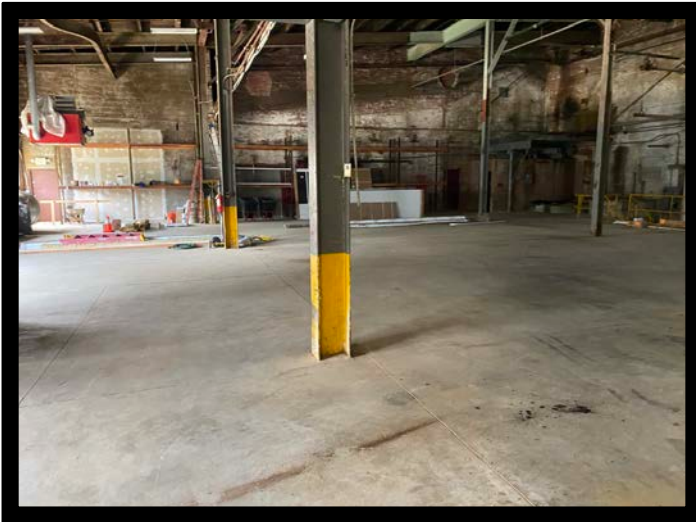
- **Industrial Property for Lease**
- **11,000 sf available**
- **ML zoning**
 - **Light Manufacturing**
- **5 loading docks**
- **1/2 acre +/- fenced secure yard**
- **Extensive build out possible**
- **1,200 amps 277/480V 3 Phase**
- **Baltimore County**
- **Asking \$7.50 psf NNN**
- **Call for more information**



Gold and Company

Commercial Real Estate in the Baltimore Metropolitan Area

1450 Wiseburg Rd, White Hall, MD 21161



Alex Simone / Mitch Gold
Gold and Company, LLC
5601 Newbury St.
Baltimore, MD 21209

410.578.1300
www.goldcommercial.net



Gold and Company

Commercial Real Estate in the Baltimore Metropolitan Area

1450 Wiseburg Rd, White Hall, MD 21161



- **2nd Space Available**
- **Retail Property for Lease**
- **2,000 sf available**
- **BL-CR zoning**
 - **Business Local, Commercial Rural**
- **Overhead drive-in door**
- **1/4 acre +/- fenced secure yard**



Alex Simone / Mitch Gold
Gold and Company, LLC
5601 Newbury St.
Baltimore, MD 21209

410.578.1300
www.goldcommercial.net

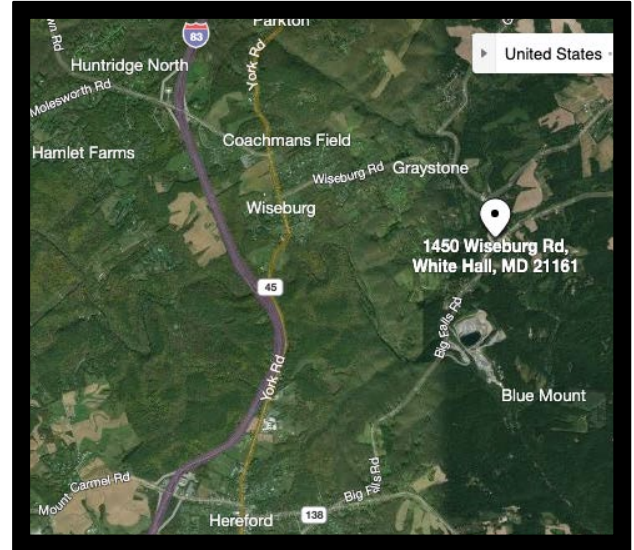
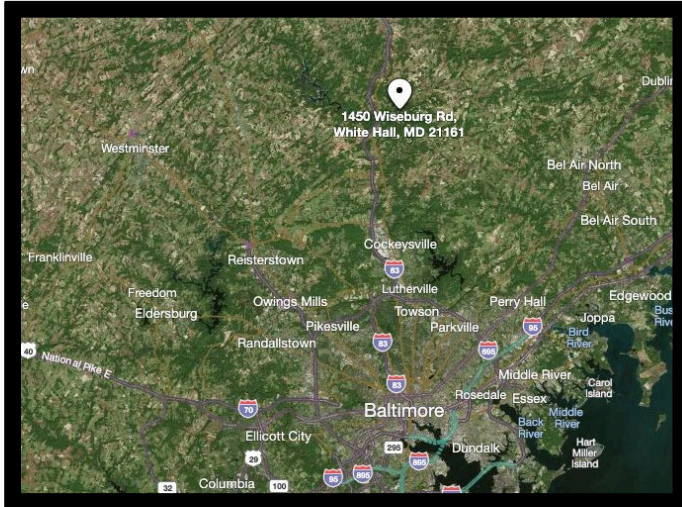


Est. 1999

Gold and Company

Commercial Real Estate in the Baltimore Metropolitan Area

1450 Wiseburg Rd, White Hall, MD 21161



Alex Simone / Mitch Gold
Gold and Company, LLC
5601 Newbury St.
Baltimore, MD 21209

410.578.1300
www.goldcommercial.net