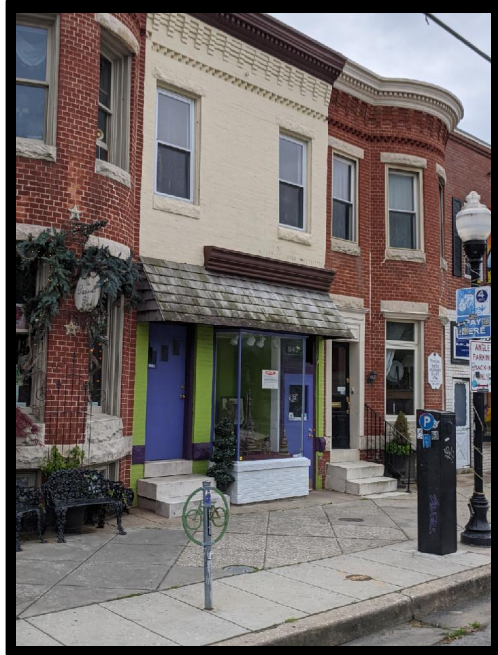




GOLD AND COMPANY, LLC



845 W. 36th St, Baltimore, MD 21211

Gold and Company, LLC

**5601 Newbury St.
Baltimore, MD 21209**

Mitch Gold
410.456.2492
Mitch@goldcommercial.net

Alex Simone
443.845.4413
Alex@goldcommercial.net

Office: 410.578.1300
www.goldcommercial.net

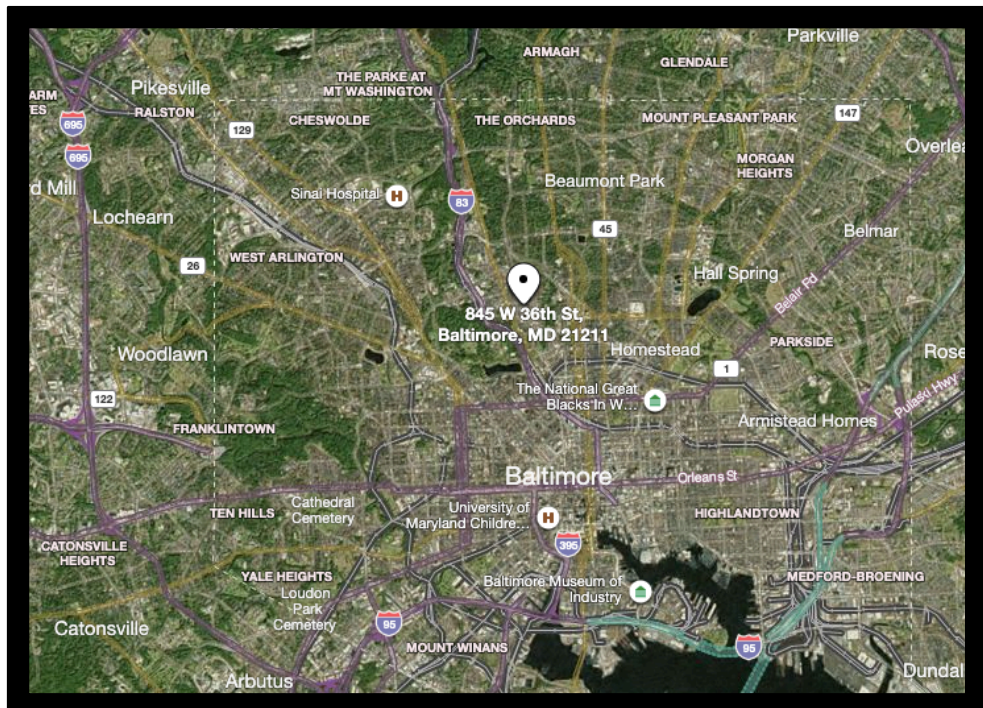
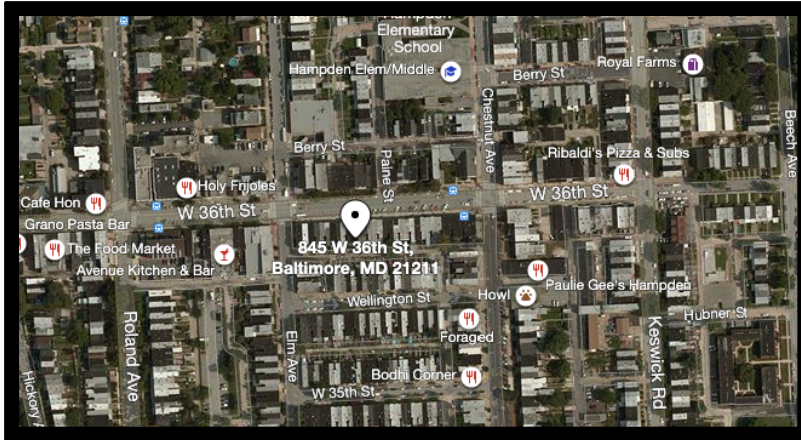
- **Hampden Storefront
FOR SALE**
- **Right on the Avenue, Hon'**
- **Tremendous foot traffic**
- **C-1 zoning**
- **Built in 1920**
- **+/- 1,300 sf building**
- **Two Floors**
- **Rear access & parking space**
- **Call for more information**



Gold and Company

Commercial Real Estate in the Baltimore Metropolitan Area

845 W. 36th St, Baltimore, MD 21211



Mitch Gold / Alex Simone
Gold and Company, LLC
5601 Newbury St.
Baltimore, MD 21209

410.578.1300
www.goldcommercial.net