



GOLD AND COMPANY, LLC



3430 2nd St. Baltimore, MD 21225

Gold And Company, LLC

**5601 Newbury St.
Baltimore, MD 21209**

**Jim Chivers
jim@goldcommercial.net
443.928.7522 Cell**

**Office: 410.578.1300
www.goldcommercial.net**

- **6,000 SF Office Space Available FOR LEASE**
- **Total Building Size: +/- 19,200 sf**
- **Plug and Play—Includes all Workstations**
- **Free Surface Parking Available**
- **Proximity to I-95 access, Federal Hill, Locust Point, South Baltimore City, and the Inner Harbor**
- **Exceptional Window Line**
- **Call For More Information**

This property offering is subject to change without notice. All information is deemed reliable but not guaranteed.

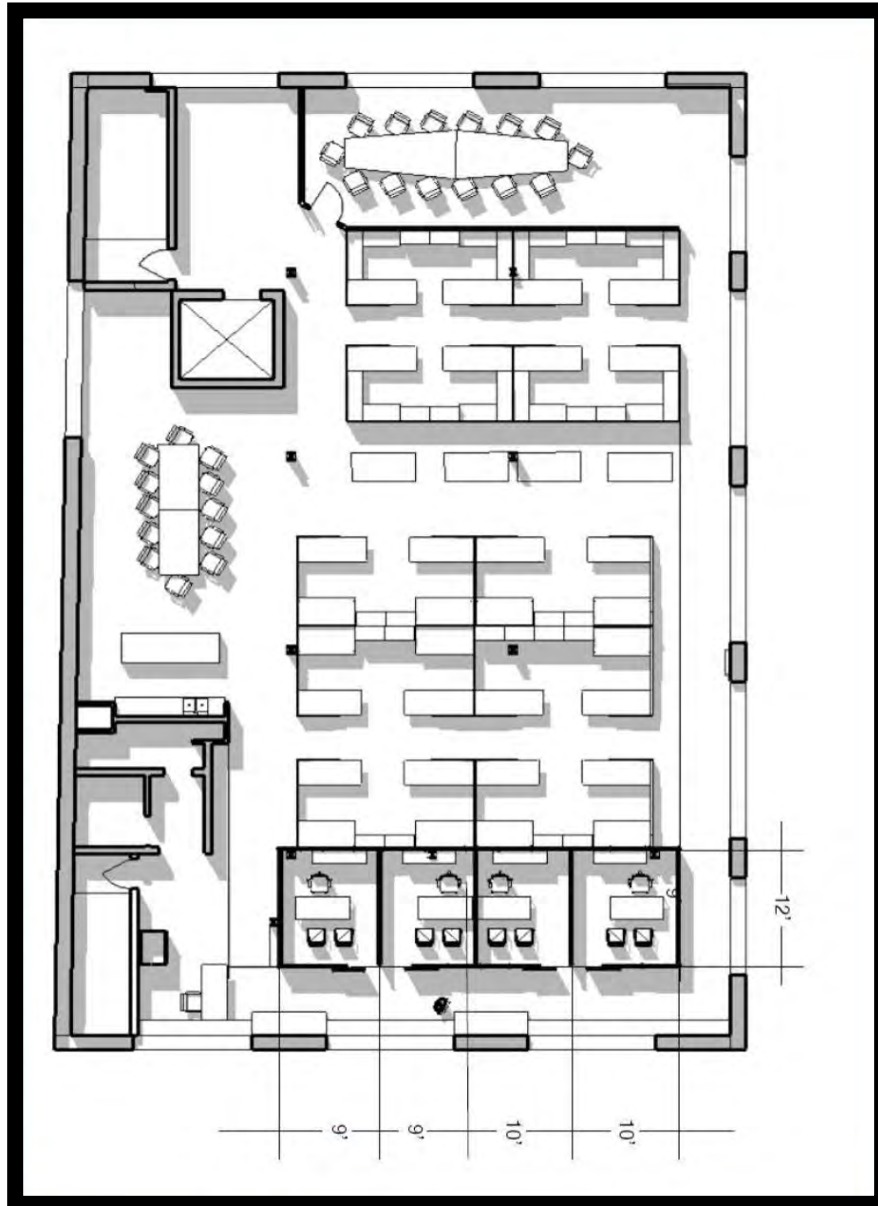


Gold And Company

Commercial Real Estate in the Baltimore Metropolitan Area

3430 2nd St. Baltimore, MD 21225

Space Plan



Jim Chivers
Gold And Company, LLC
5601 Newbury St.
Baltimore, MD 21209

www.goldcommercial.net
410.578.1300

This property offering is subject to change without notice. All information is deemed reliable but not guaranteed.

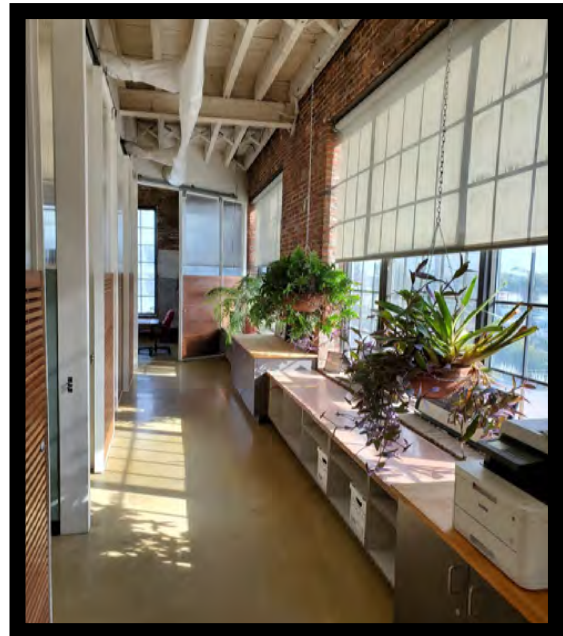
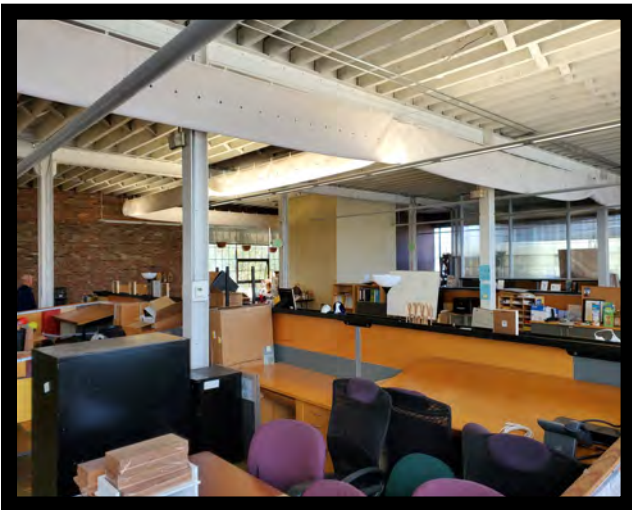
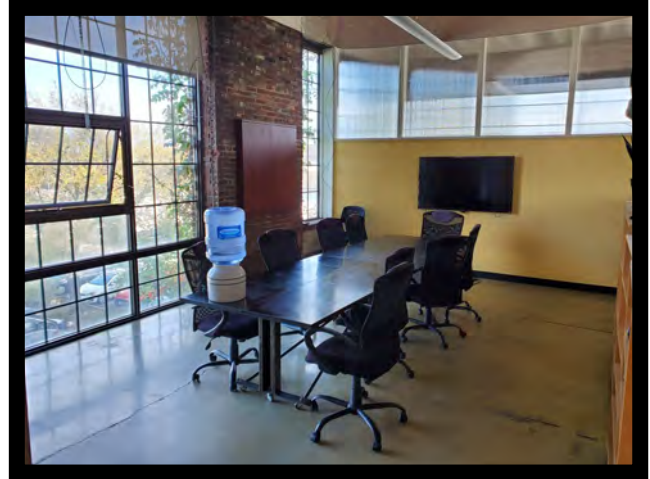


Gold And Company

Commercial Real Estate in the Baltimore Metropolitan Area

3430 2nd St. Baltimore, MD 21225

Interior Pictures



Jim Chivers
Gold And Company, LLC
5601 Newbury St.
Baltimore, MD 21209

www.goldcommercial.net
410.578.1300

This property offering is subject to change without notice. All information is deemed reliable but not guaranteed.

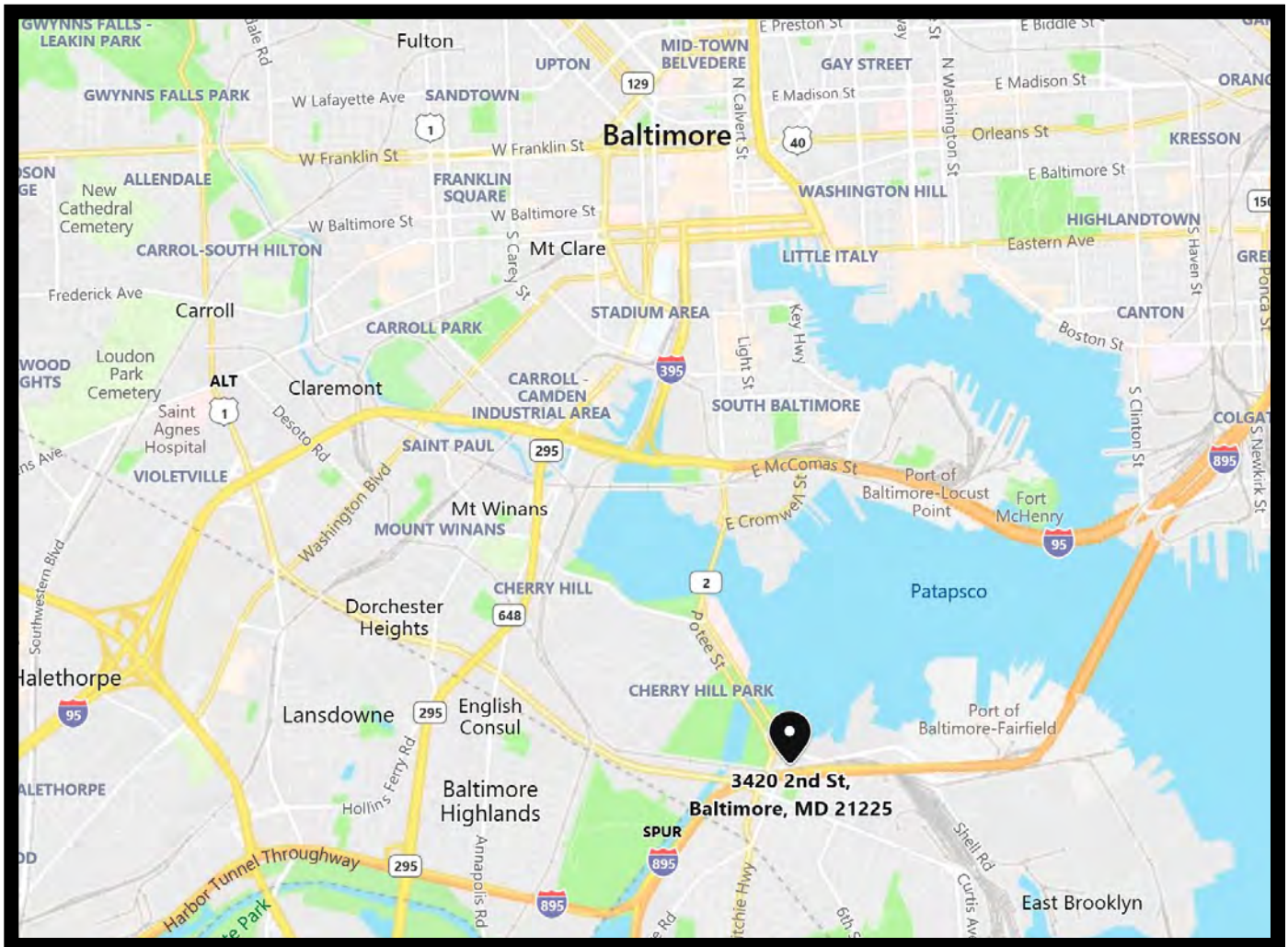


Gold And Company

Commercial Real Estate in the Baltimore Metropolitan Area

3430 2nd St. Baltimore, MD 21225

Location Map



Jim Chivers
Gold And Company, LLC
5601 Newbury St.
Baltimore, MD 21209

www.goldcommercial.net
410.578.1300

This property offering is subject to change without notice. All information is deemed reliable but not guaranteed.