



GOLD AND COMPANY, LLC



2425 Sidney Ave. / 2832 Maisel St. Baltimore, MD 21230

Gold And Company, LLC

**5601 Newbury St.
Baltimore, MD 21209**

**Jim Chivers
Cell: 443.928.7522
jim@goldcommercial.net
Office: 410.578.1300
www.goldcommercial.net**

- **Industrial / Contractors Facility Available**
- **14,000 sf Building**
- **+/- 1,200 sf Office**
- **Drive-In Access—2 Drive-In Doors**
- **1.32 Acres—Fenced Lot**
- **Located in Qualified Hub Zone**
- **South Baltimore City**
- **I-1 Zoning**
- **Excellent Access to I-95**
- **Call For More Information**

This property offering is subject to change without notice. All information is deemed reliable but not guaranteed.

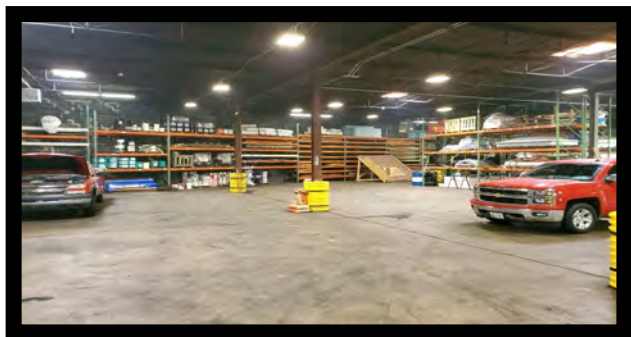
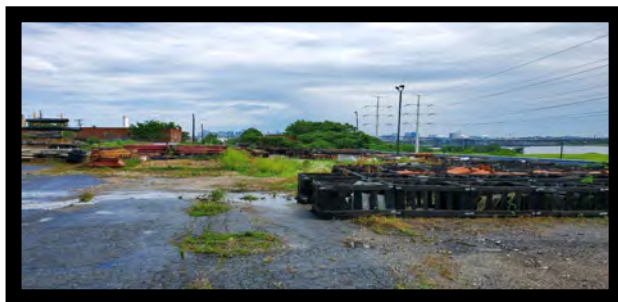
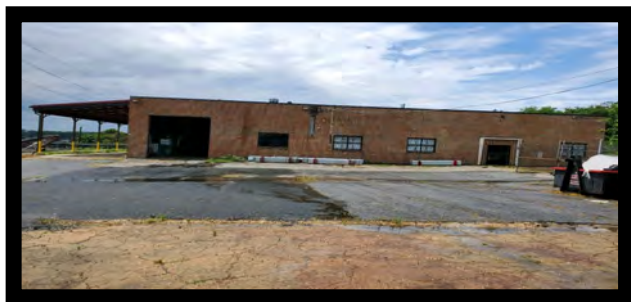


Gold And Company

Commercial Real Estate in the Baltimore Metropolitan Area

2425 Sidney Ave. / 2832 Maisel St. Baltimore, MD 21230

Additional Pictures



Jim Chivers
Gold And Company, LLC
5601 Newbury St.
Baltimore, MD 21209

410.578.1300 (Office)
443.928.7522 (Cell)
www.goldcommercial.net

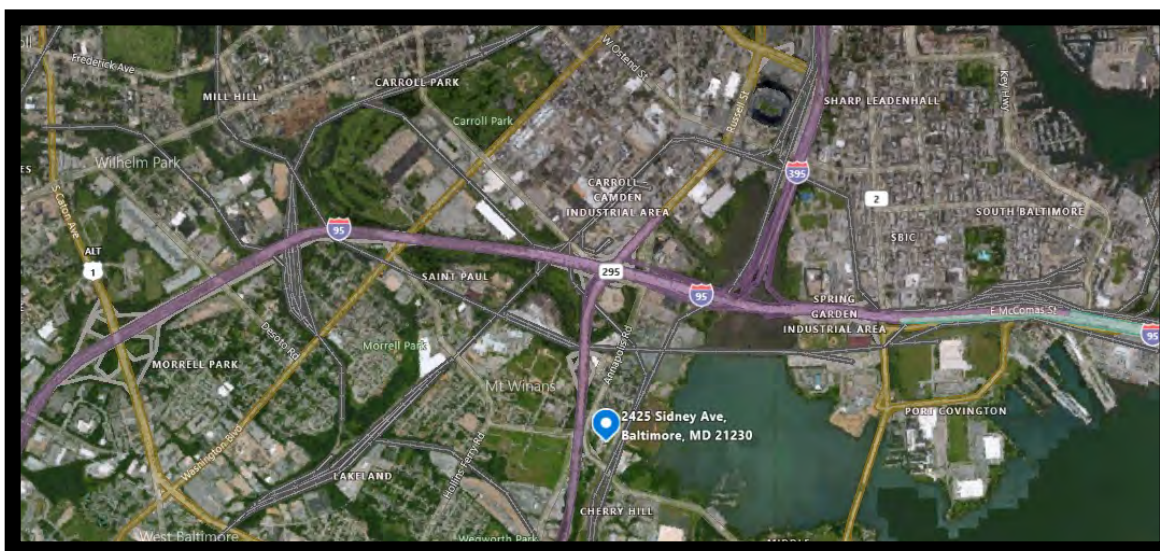


Gold And Company

Commercial Real Estate in the Baltimore Metropolitan Area

2425 Sidney Ave. / 2832 Maisel St. Baltimore, MD 21230

Aerial / Map



Jim Chivers
Gold And Company, LLC
5601 Newbury St.
Baltimore, MD 21209

410.578.1300 (Office)
443.928.7522 (Cell)
www.goldcommercial.net

This property offering is subject to change without notice. All information is deemed reliable but not guaranteed.