



GOLD AND COMPANY, LLC



1601 West 41st St. Baltimore, MD 21211

Gold And Company, LLC

**5601 Newbury St.
Baltimore, MD 21209**

**Jim Chivers
jim@goldcommercial.net
443.928.7522 Cell**

**Office: 410.578.1300
www.goldcommercial.net**

- **Freestanding Office Building Available**
- **4,000 sf FOR LEASE**
- **Free Off Street Parking Available**
- **9 Offices, Large Conference Room, Storage Rooms, Kitchenette, and a Receptionist Area**
- **Located in the Popular Community Area b/t Woodberry and Hampden**
- **Across From The New Union Collective**
- **Frontage on 41st St and Visible rom the JFX**
- **Call For More Information**

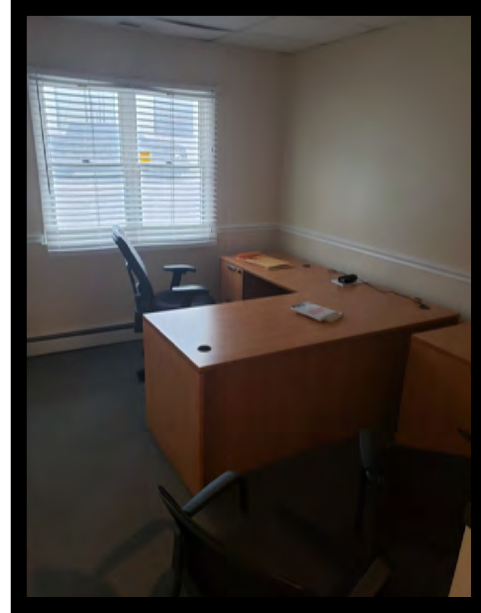


Gold And Company

Commercial Real Estate in the Baltimore Metropolitan Area

1601 West 41st St. Baltimore, MD 21211

Pictures



Jim Chivers
Gold And Company, LLC
5601 Newbury St.
Baltimore, MD 21209

www.goldcommercial.net
410.578.1300

This property offering is subject to change without notice. All information is deemed reliable but not guaranteed.

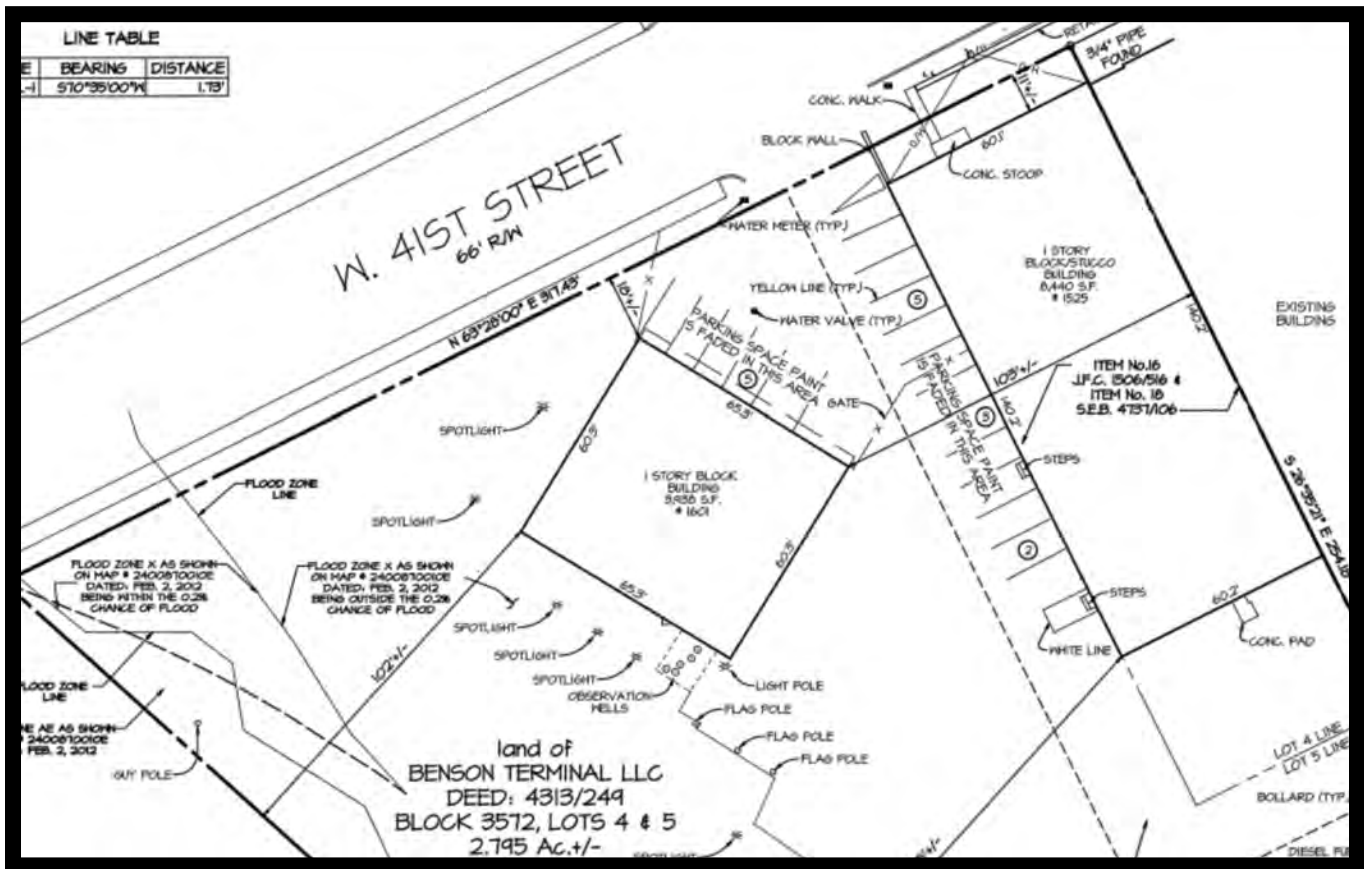


Gold And Company

Commercial Real Estate in the Baltimore Metropolitan Area

1601 West 41st St. Baltimore, MD 21211

Survey



Jim Chivers
Gold And Company, LLC
5601 Newbury St.
Baltimore, MD 21209

www.goldcommercial.net
410.578.1300



Gold And Company

Commercial Real Estate in the Baltimore Metropolitan Area

1601 West 41st St. Baltimore, MD 21211

Aerial



Jim Chivers
Gold And Company, LLC
5601 Newbury St.
Baltimore, MD 21209

www.goldcommercial.net
410.578.1300

This property offering is subject to change without notice. All information is deemed reliable but not guaranteed.