



GOLD AND COMPANY, LLC



901 Baltic Ave. Baltimore, MD 21225

Gold And Company, LLC

**5601 Newbury St.
Baltimore, MD 21209**

**Jim Chivers
443.928.7522 cell
jim@goldcommercial.net**

**Mitch Gold
410.456.2492 cell
mitch@goldcommercial.net**

www.goldcommercial.net

- **Industrial Property Available FOR SALE**
- **+/- 38,000 sf Total Building Size**
- **4.5 Total Acres**
- **I-2 Zoning (Heavy Industrial)**
- **Main Building—8 Dock Doors—3 Drive-In Doors**
- **Garage Building—4 Drive-In Doors**
- **Close to I-95 and Fairfield Maritime Port**
- **16' Ceiling Height**
- **Heavy Power**
- **Leased to a National Credit Company**
- **Call For More Information**

This property offering is subject to change without notice. All information is deemed reliable but not guaranteed.

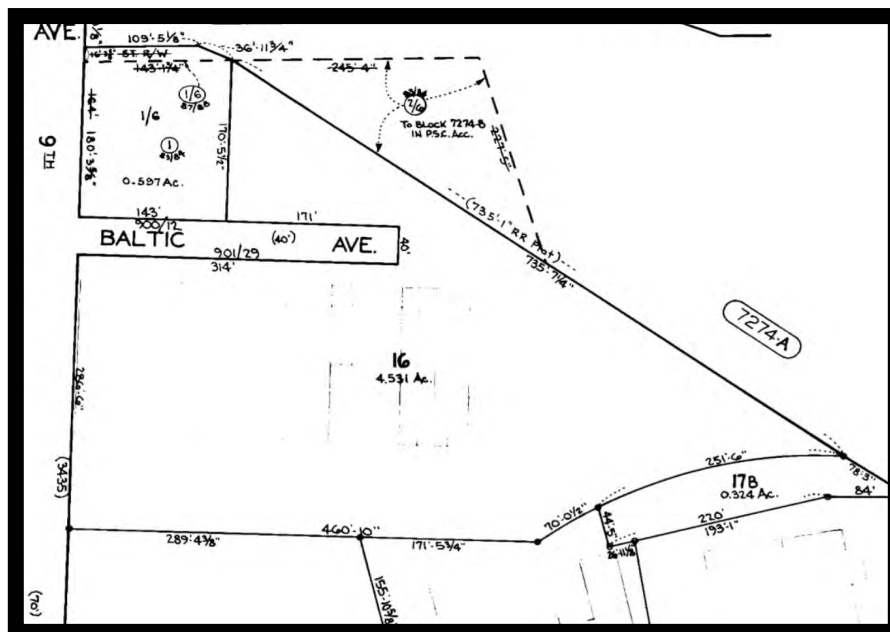
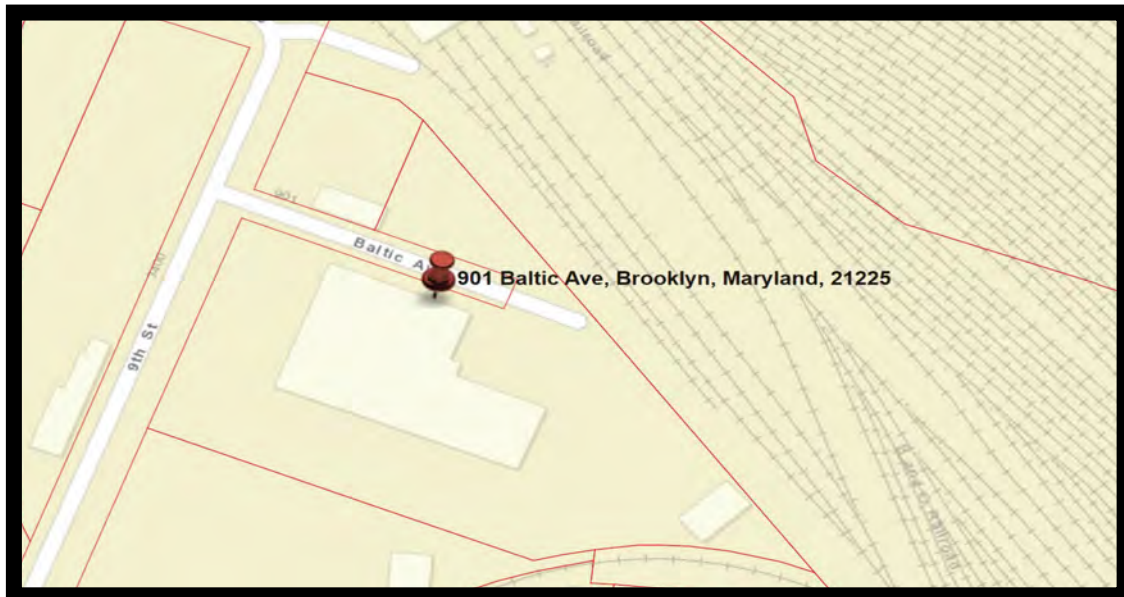


Gold And Company

Commercial Real Estate in the Baltimore Metropolitan Area

901 Baltic Ave. Baltimore, MD 21225

Property Layout



Jim Chivers / Mitch Gold
Gold And Company, LLC
5601 Newbury St.
Baltimore, MD 21209

410.578.1300 (Office)

www.goldcommercial.net

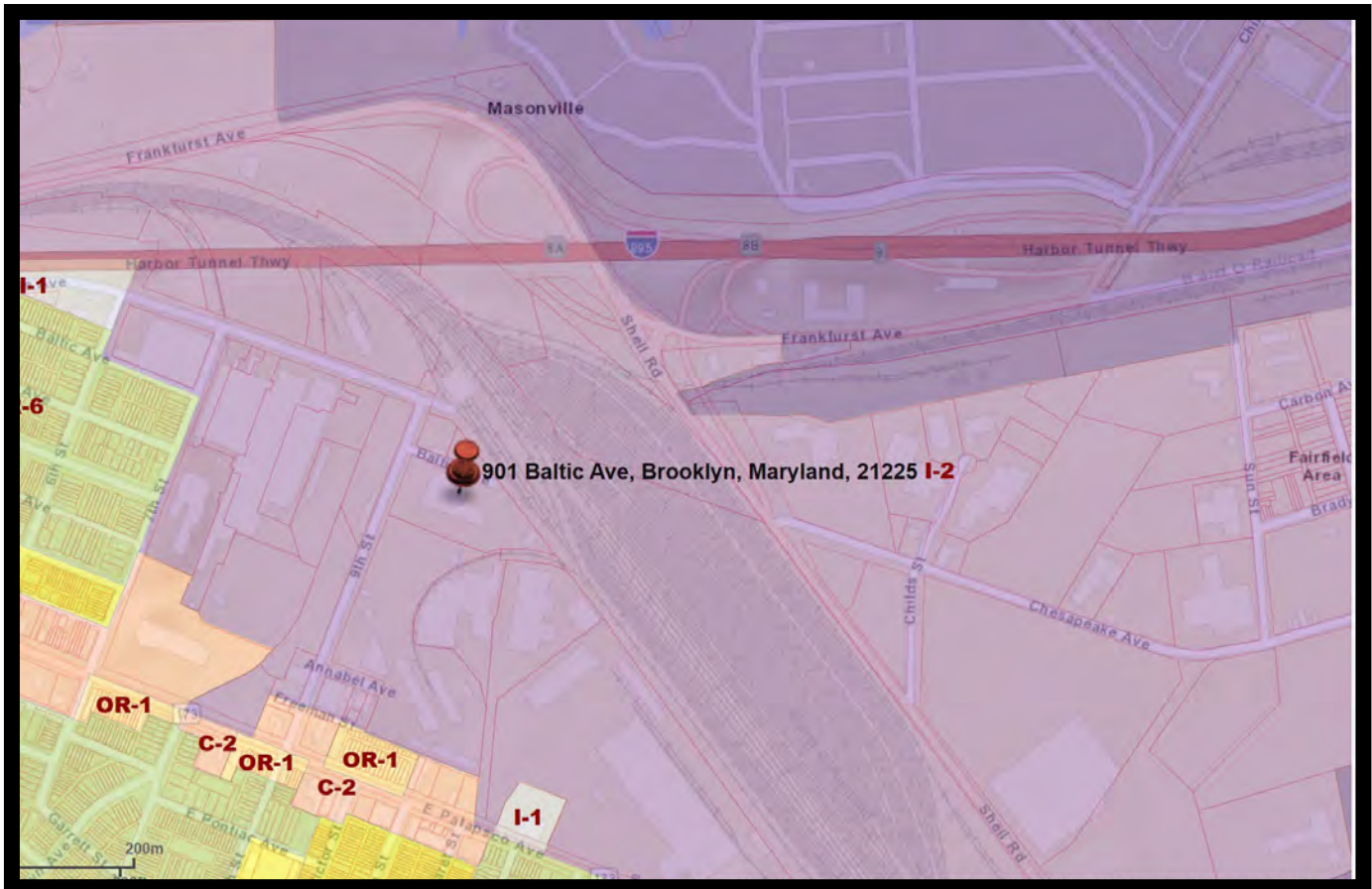


Gold And Company

Commercial Real Estate in the Baltimore Metropolitan Area

901 Baltic Ave. Baltimore, MD 21225

Zoning Map



Jim Chivers / Mitch Gold
Gold And Company, LLC
5601 Newbury St.
Baltimore, MD 21209

410.578.1300 (Office)

www.goldcommercial.net

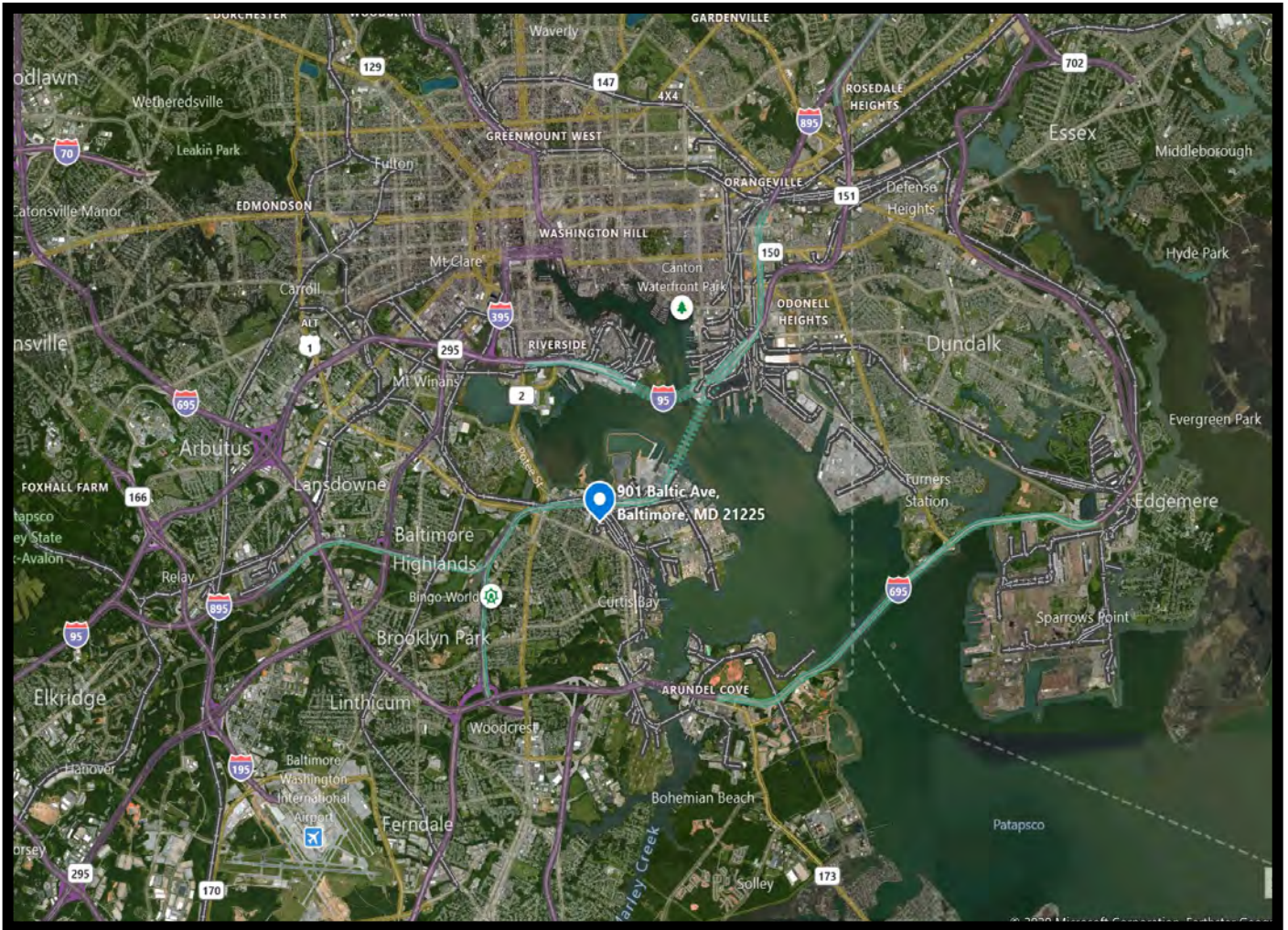


Gold And Company

Commercial Real Estate in the Baltimore Metropolitan Area

901 Baltic Ave. Baltimore, MD 21225

Map



Jim Chivers / Mitch Gold
Gold And Company, LLC
5601 Newbury St.
Baltimore, MD 21209

410.578.1300 (Office)

www.goldcommercial.net