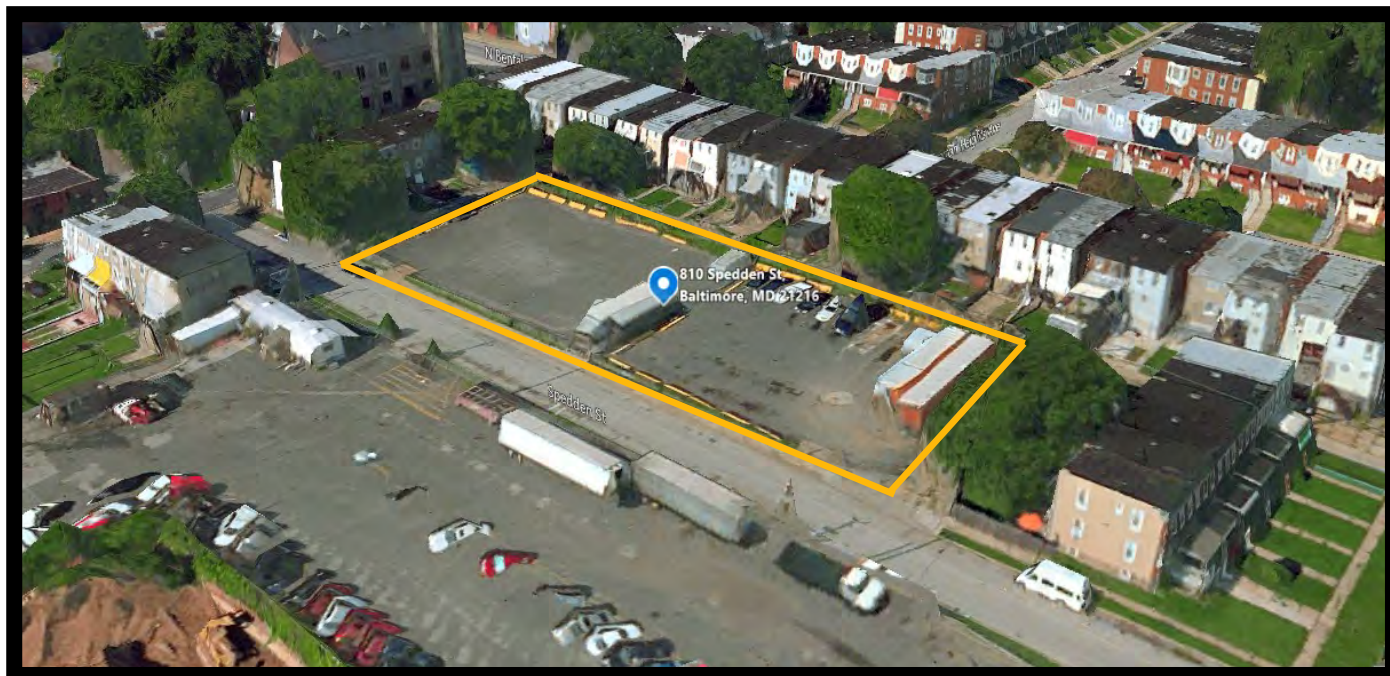




# **GOLD AND COMPANY, LLC**



**810 Spedden St. Baltimore, MD 21216**

## **Gold And Company, LLC**

**5601 Newbury St.  
Baltimore, MD 21209**

**Jim Chivers  
Cell: 443.928.7522  
jim@goldcommercial.net  
Office: 410.578.1300  
www.goldcommercial.net**

- **Lot Available**
- **0.59 Acre**
- **Located in Qualified Opportunity Zone  
and Hub Zone**
- **West Baltimore City**
- **Fenced Lot**
- **Paved and Lit Lot**
- **Call For More Information**

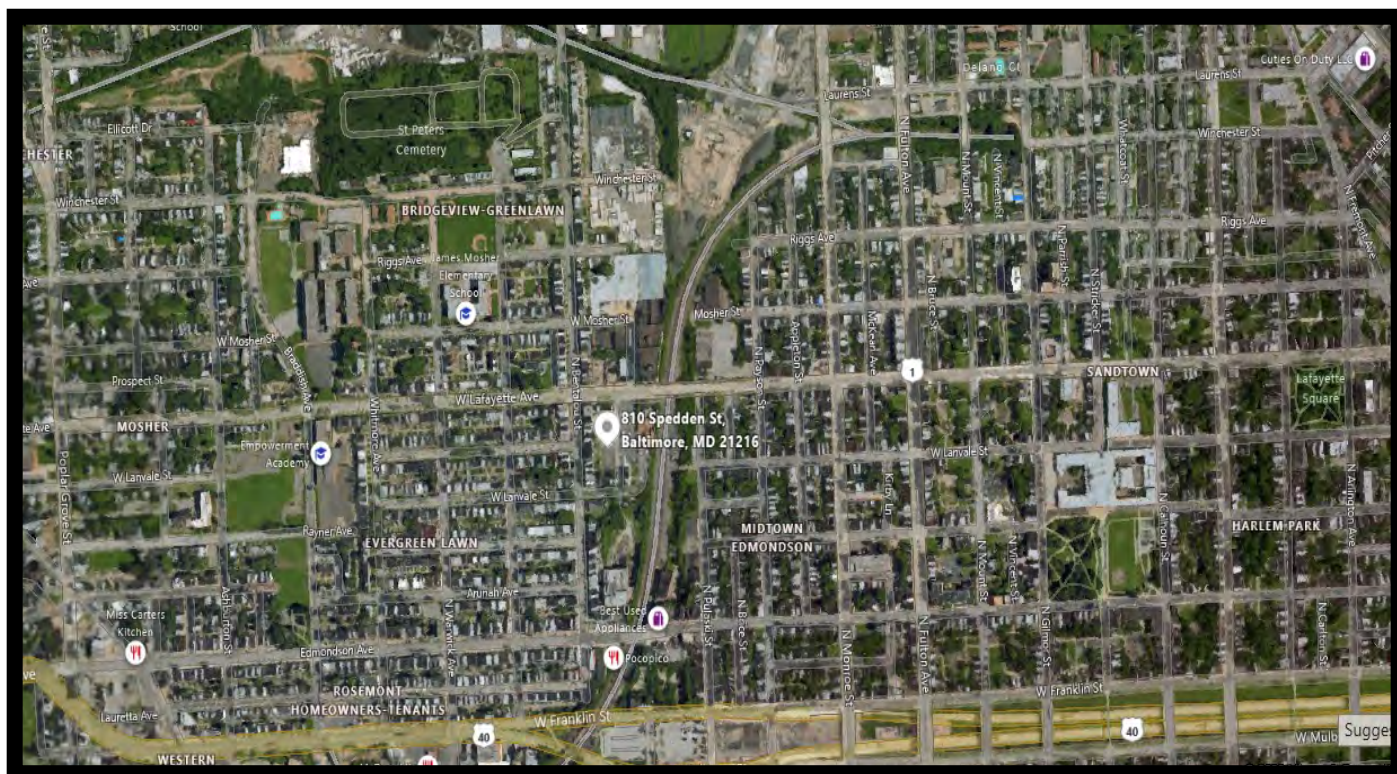


# Gold And Company

*Commercial Real Estate in the Baltimore Metropolitan Area*

**810 Spedden St. Baltimore, MD 21216**

## Aerial View



**Jim Chivers**  
**Gold And Company, LLC**  
**5601 Newbury St.**  
**Baltimore, MD 21209**

**410.578.1300 (Office)**  
**443.928.7522 (Cell)**  
**[www.goldcommercial.net](http://www.goldcommercial.net)**

This property offering is subject to change without notice. All information is deemed reliable but not guaranteed.