



# GOLD AND COMPANY, LLC



**1303 Carroll St. Baltimore, MD 21230**

## Gold And Company, LLC

**5601 Newbury St.  
Baltimore, MD 21209**

**Jim Chivers / Gary Glover  
Mitch Gold  
Office: 410.578.1300  
Fax: 410.578.0200  
www.goldcommercial.net**

- **Flex / Industrial Building Available FOR LEASE**
- **+/- 30,000 Total SF**
- **Two Story Industrial Building**
- **M-2-2 Zoning**
- **High Ceilings, Large Floor Plate, and Wide Column Spacing**
- **Great Second Floor Window Lines**
- **Easy Access to I-95 / 295 / 895**
- **Dock Loading**
- **Close Proximity to Camden Yards, M&T Bank, Horseshoe Casino**
- **Located in 'Pigtown'**
- **Call For More Information**

This property offering is subject to change without notice. All information is deemed reliable but not guaranteed.



# Gold And Company

*Commercial Real Estate in the Baltimore Metropolitan Area*

**1303 Carroll St. Baltimore, MD 21230**



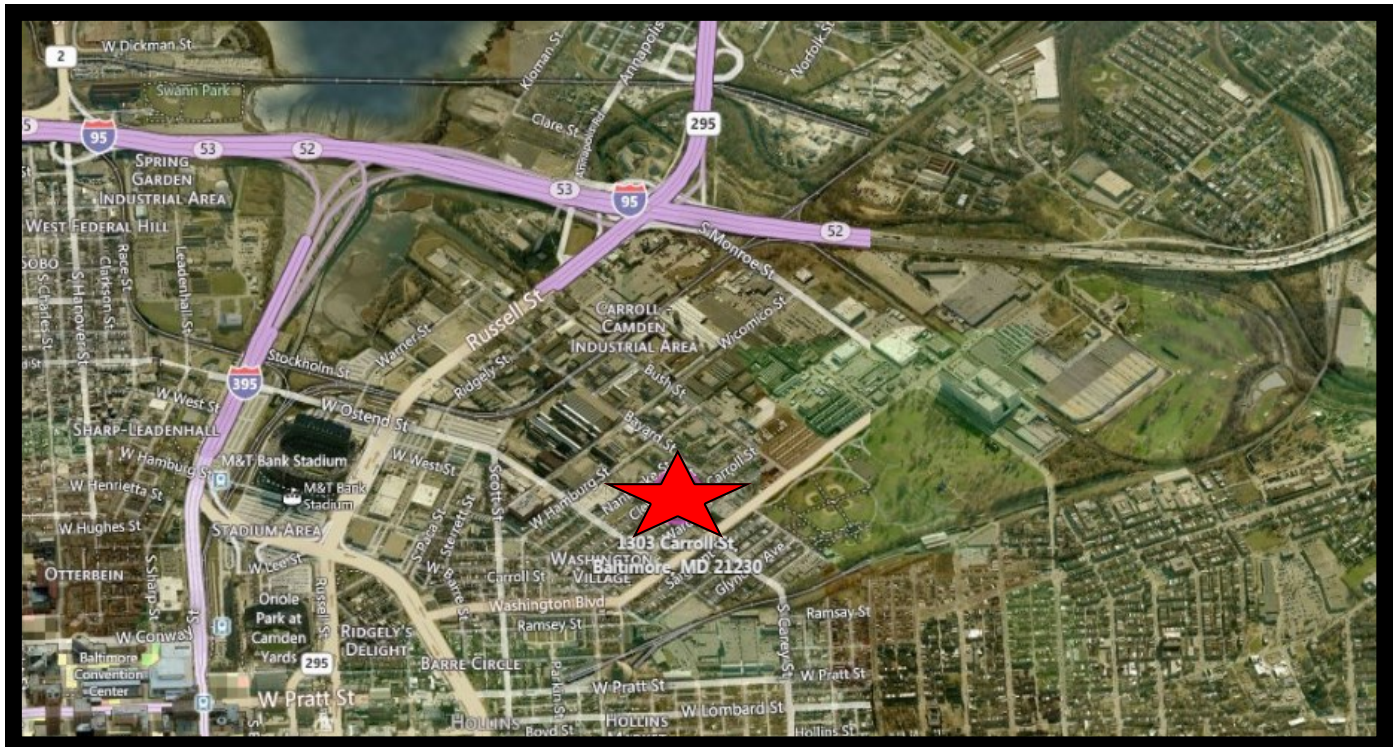
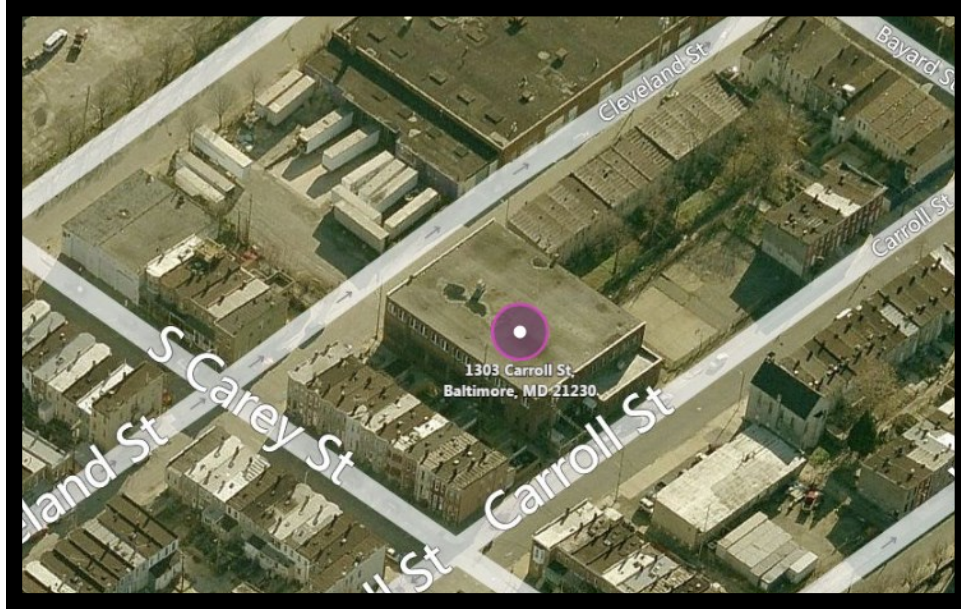
**Jim Chivers / Gary Glover / Mitch Gold**  
**Gold And Company, LLC**  
**5601 Newbury St.**  
**Baltimore, MD 21209**

**410.578.1300 (Office)**  
**410.578.0200 (Fax)**  
**[www.goldcommercial.net](http://www.goldcommercial.net)**



# Gold And Company

*Commercial Real Estate in the Baltimore Metropolitan Area*



**Jim Chivers / Gary Glover / Mitch Gold**  
**Gold And Company, LLC**  
**5601 Newbury St.**  
**Baltimore, MD 21209**

**410.578.1300 (Office)**  
**410.578.0200 (Fax)**  
**[www.goldcommercial.net](http://www.goldcommercial.net)**