



# **GOLD AND COMPANY, LLC**



**1303 Carroll St. Baltimore, MD 21230**

## **Gold And Company, LLC**

**5601 Newbury St.  
Baltimore, MD 21209**

**Jim Chivers  
443.928.7522 cell  
jim@goldcommercial.net**

**www.goldcommercial.net**

- **+/- 30,000 SF Industrial Loft Building AVAILABLE**
- **FOR SALE or FOR LEASE**
- **+/- 30,000 sf on Two Levels**
- **Approximately +/- 1,500 sf of First Floor Office Space**
- **Located in Carroll-Camden / Pigtown Submarket**
- **High Ceilings, Large Floor Plate, Wide Column Spacing with 360 degree window Lines**
- **Access to Heavy Power**
- **Ideal for Manufacturing / Assembly**
- **Call For More Information**

This property offering is subject to change without notice. All information is deemed reliable but not guaranteed.

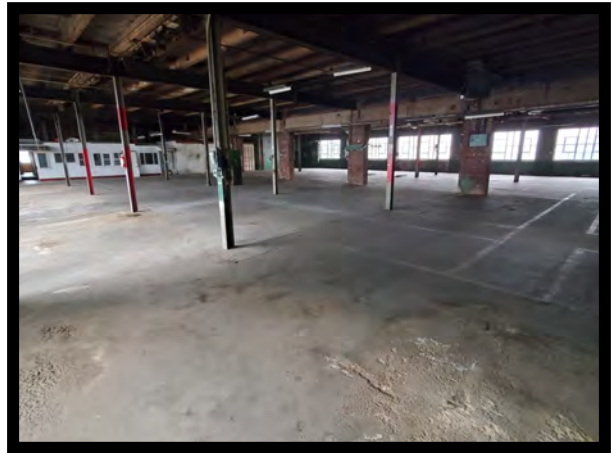
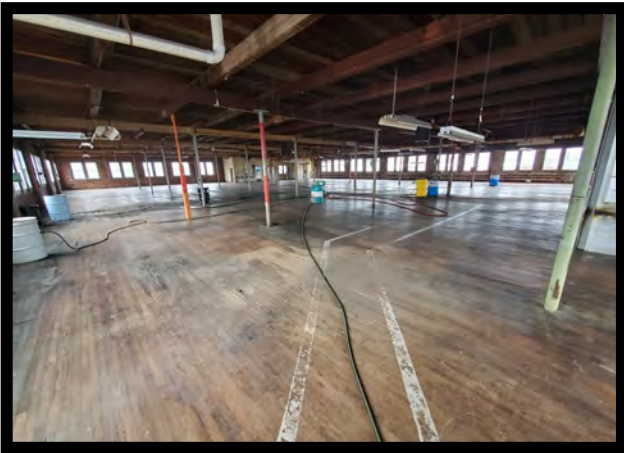
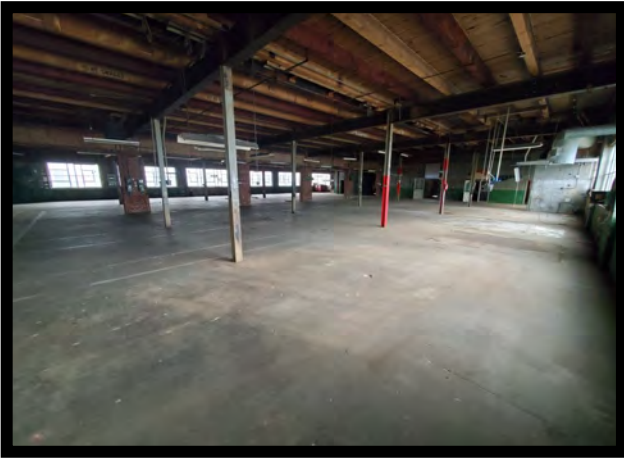


# Gold And Company

*Commercial Real Estate in the Baltimore Metropolitan Area*

**1303 Carroll St. Baltimore, MD 21230**

## Pictures



**Jim Chivers**  
**Gold And Company, LLC**  
**5601 Newbury St.**  
**Baltimore, MD 21209**

**410.578.1300 (Office)**

**[www.goldcommercial.net](http://www.goldcommercial.net)**

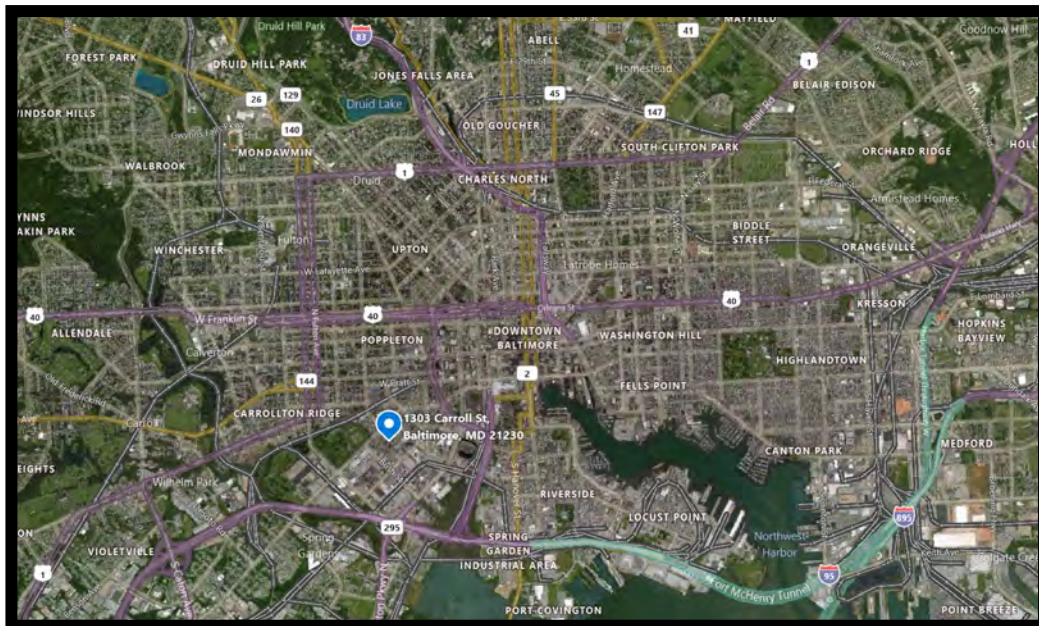
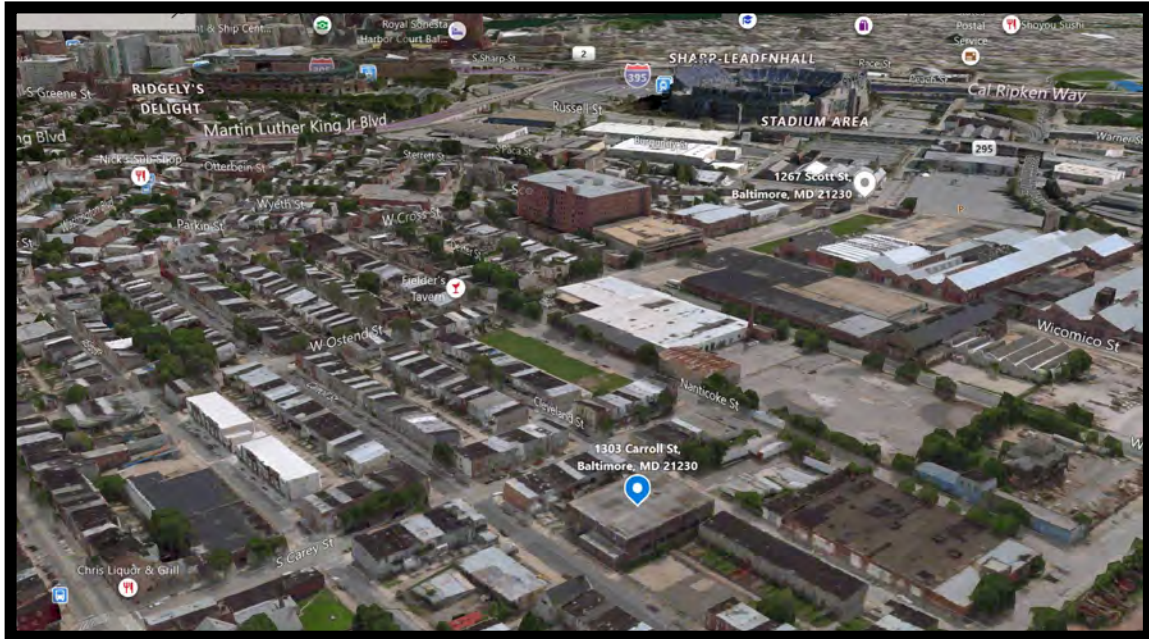


# Gold And Company

*Commercial Real Estate in the Baltimore Metropolitan Area*

**1303 Carroll St. Baltimore, MD**

## Birds Eye View and Map



**Jim Chivers**  
**Gold And Company, LLC**  
**5601 Newbury St.**  
**Baltimore, MD 21209**

**410.578.1300 (Office)**

**[www.goldcommercial.net](http://www.goldcommercial.net)**