



GOLD AND COMPANY, LLC



4207 Menlo Dr. Baltimore, MD

Gold And Company, LLC

**5601 Newbury St.
Baltimore, MD 21209**

**Jim Chivers
443.928.7522 cell
jim@goldcommercial.net**

**Alex Simone
443.845.4413 cell
alex@goldcommercial.net**

**Mitch Gold
410.456.2492 cell
mitch@goldcommercial.net**

- **Flex Buildings Available**
- **Completely Renovated**
- **+/- 21,125 Total SF**
 - **Front Building: 12,345 sf**
 - **Back Building: 8,780 sf**
- **All Drive-In Access**
- **1.03 Total Acres**
- **I-1 Zoning (Baltimore City)**
- **Sprinklered**
- **Will Build To Suit**
- **Located in Qualified Hub Zone**
- **Call For More Information**

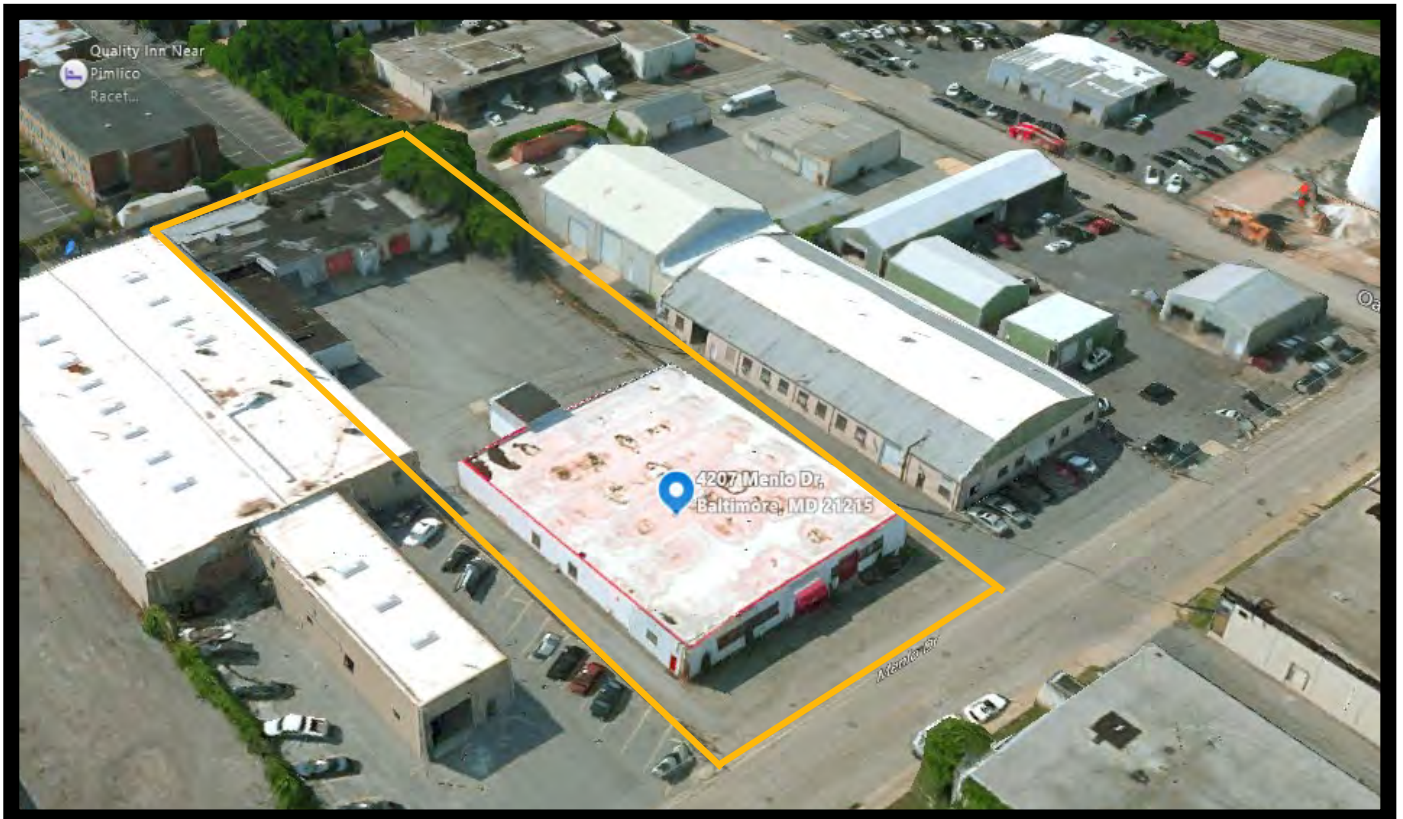


Gold And Company

Commercial Real Estate in the Baltimore Metropolitan Area

4207 Menlo Dr. Baltimore, MD

Aerial



Jim Chivers / Alex Simone
Gold And Company, LLC
5601 Newbury St.
Baltimore, MD 21209

410.578.1300 (Office)

www.goldcommercial.net



Gold And Company

Commercial Real Estate in the Baltimore Metropolitan Area

4207 Menlo Dr. Baltimore, MD

Additional Pictures



Jim Chivers / Alex Simone
Gold And Company, LLC
5601 Newbury St.
Baltimore, MD 21209

410.578.1300 (Office)

www.goldcommercial.net



Gold And Company

Commercial Real Estate in the Baltimore Metropolitan Area

4207 Menlo Dr. Baltimore, MD

Survey



Jim Chivers / Alex Simone
Gold And Company, LLC
5601 Newbury St.
Baltimore, MD 21209

410.578.1300 (Office)

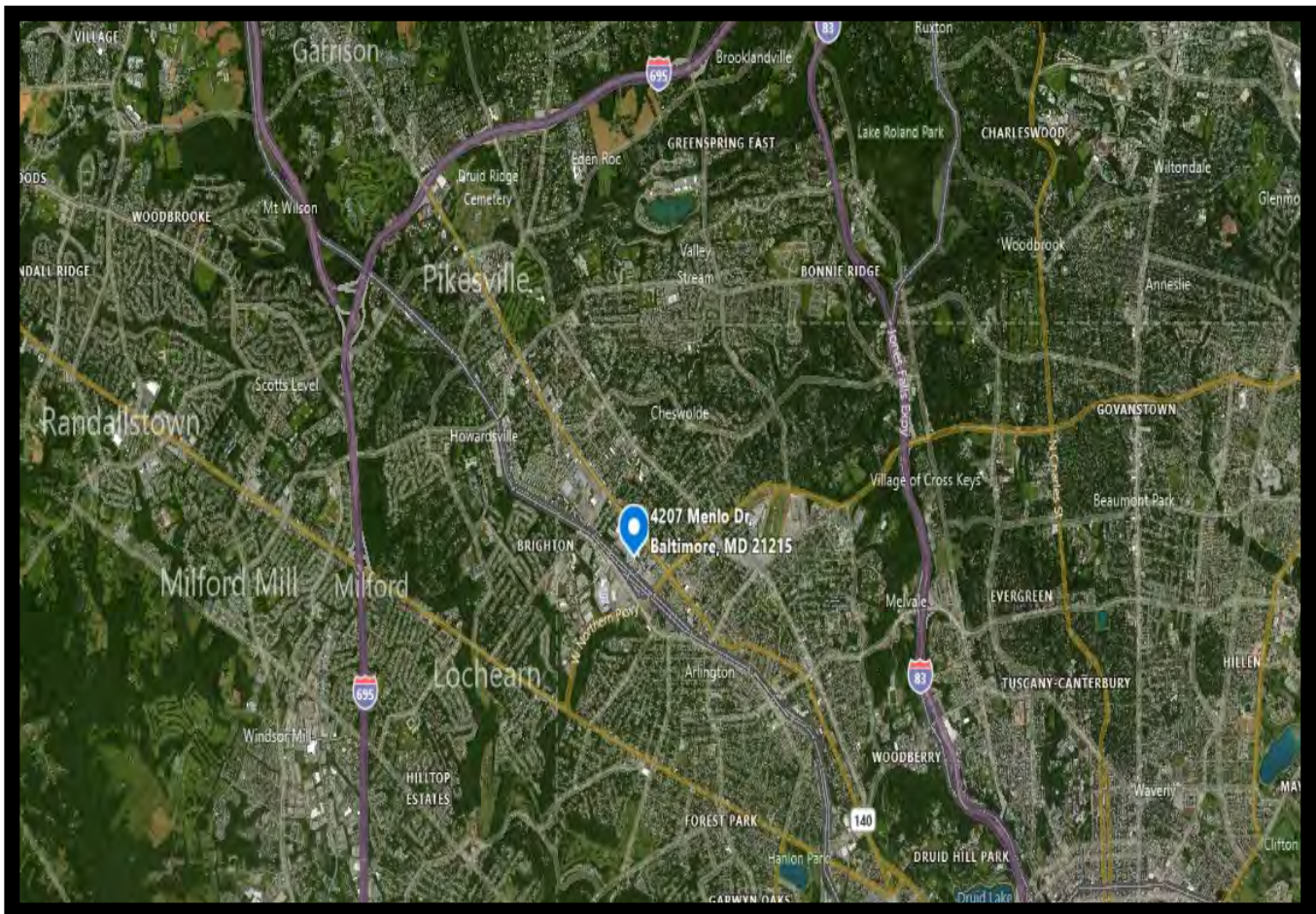
www.goldcommercial.net



Gold And Company

Commercial Real Estate in the Baltimore Metropolitan Area

Map



Jim Chivers / Alex Simone
Gold And Company, LLC
5601 Newbury St.
Baltimore, MD 21209

410.578.1300 (Office)

www.goldcommercial.net