



GOLD AND COMPANY, LLC

WWW.GOLDCOMMERCIAL.NET

Commercial Real Estate in the Baltimore Metropolitan Area



7930 Solley Rd. Glen Burnie, MD 21060

Gold And Company, LLC

**5601 Newbury St.
Baltimore, MD 21209**

**Jim Chivers
jim@goldcommercial.net
443.928.7522 Cell
www.goldcommercial.net**

- **Industrial Land Available FOR SALE**
- **8.687 Total Acres**
- **Two Parcels (Map 0010 and Parcels 0109, 0110)**
- **Anne Arundel County**
- **W-2 and W-1 Zoning**
- **Located in MD State Priority Funding Area**
- **Electric Connected to Site / Utilities Available**
- **Close Proximity to Fairfield Port / Curtis Bay**
- **Ideal for Contractor Serving Baltimore / DC**
- **Call For More Information**

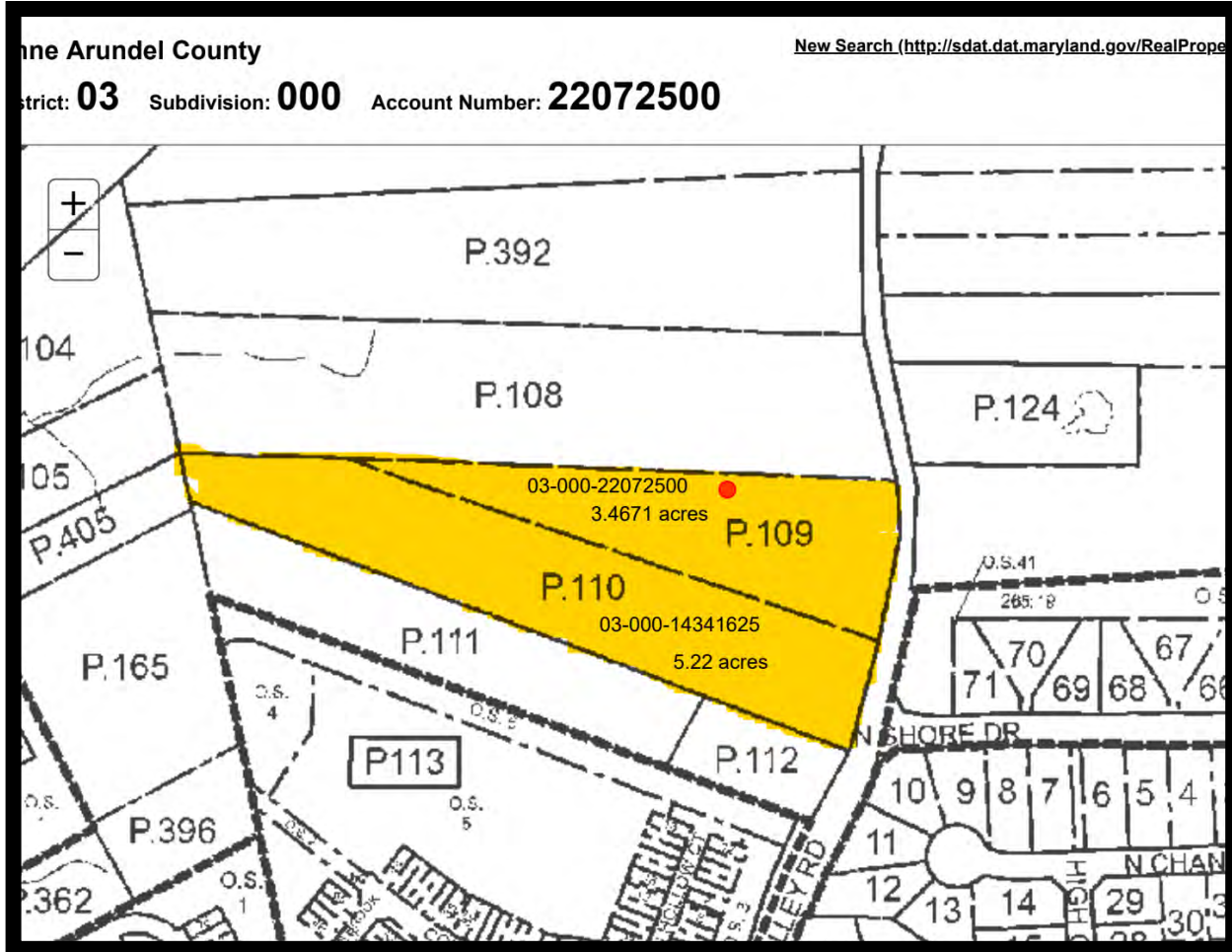
This property offering is subject to change without notice. All information is deemed reliable but not guaranteed.



Gold And Company

Commercial Real Estate in the Baltimore Metropolitan Area

Tax Map with Land Area Info



Jim Chivers
Gold And Company, LLC
5601 Newbury St.
Baltimore, MD 21209

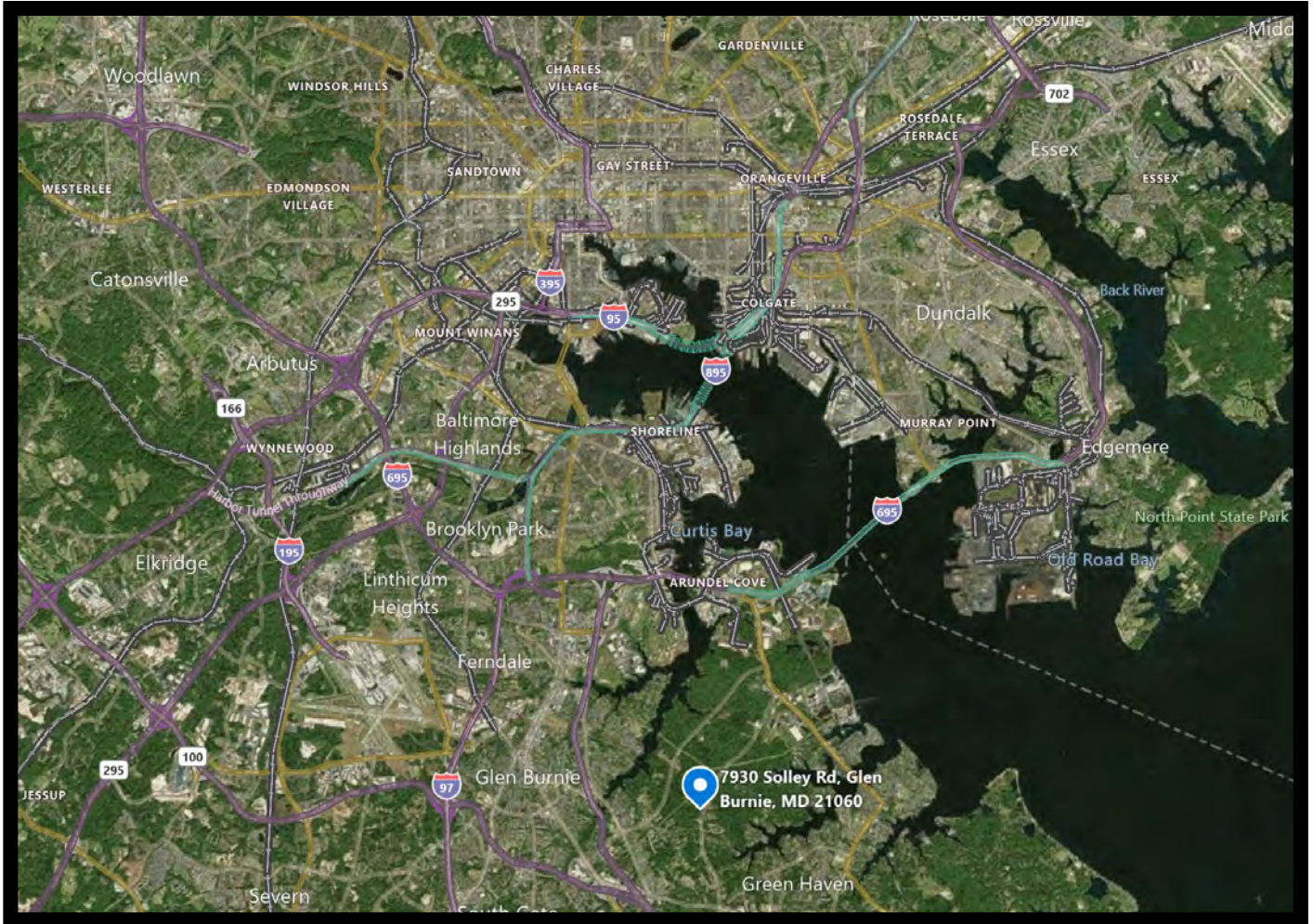
www.goldcommercial.net
410.578.1300



Gold And Company

Commercial Real Estate in the Baltimore Metropolitan Area

Aerial / Map



Jim Chivers
Gold And Company, LLC
5601 Newbury St.
Baltimore, MD 21209

www.goldcommercial.net
410.578.1300

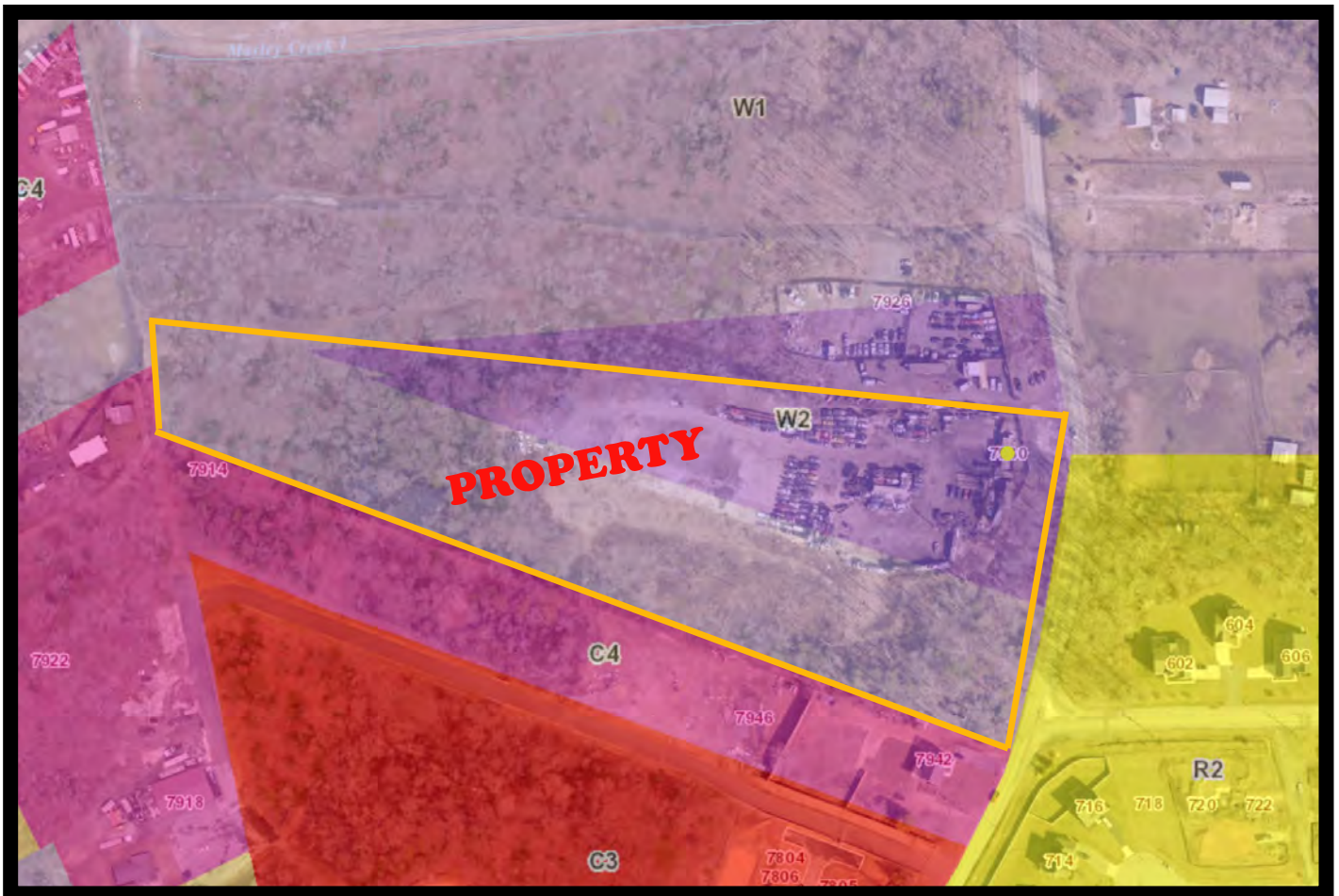
This property offering is subject to change without notice. All information is deemed reliable but not guaranteed.



Gold And Company

Commercial Real Estate in the Baltimore Metropolitan Area

ZONING MAP



Jim Chivers
Gold And Company, LLC
5601 Newbury St.
Baltimore, MD 21209

www.goldcommercial.net
410.578.1300