



Est. 1999

# **GOLD AND COMPANY, LLC**



**1601 West 41st St. Baltimore, MD 21211**

## **Gold And Company, LLC**

**5601 Newbury St.  
Baltimore, MD 21209**

**Jim Chivers  
jim@goldcommercial.net  
443.928.7522 Cell**

**Office: 410.578.1300  
www.goldcommercial.net**

- **Freestanding Office Building Available**
- **4,000 sf FOR LEASE**
- **Free Off Street Parking Available**
- **9 Offices, Large Conference Room, Storage Rooms, Kitchenette, and a Receptionist Area**
- **Located in the Popular Community Area b/t Woodberry and Hampden**
- **Across From The New Union Collective**
- **Frontage on 41st St and Visible rom the JFX**
- **Call For More Information**

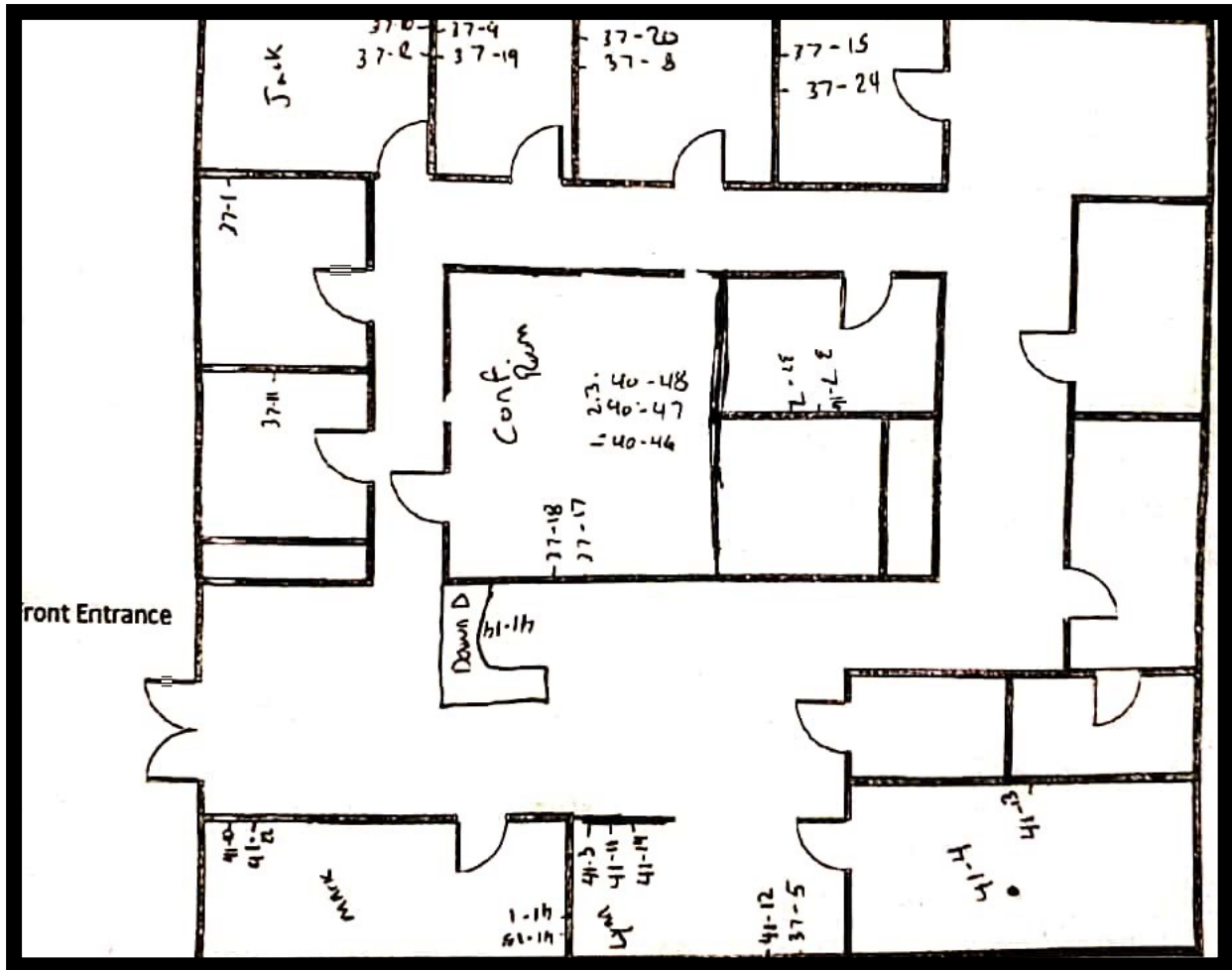


# Gold And Company

Commercial Real Estate in the Baltimore Metropolitan Area

1601 West 41st St. Baltimore, MD 21211

## Layout Sketch



Jim Chivers  
Gold And Company, LLC  
5601 Newbury St.  
Baltimore, MD 21209

[www.goldcommercial.net](http://www.goldcommercial.net)  
410.578.1300

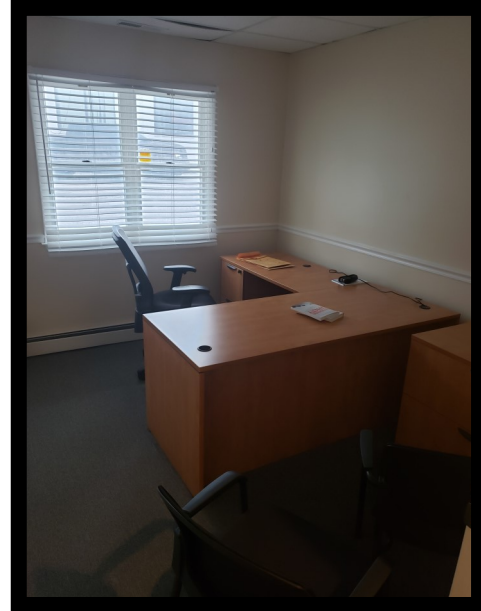


# Gold And Company

*Commercial Real Estate in the Baltimore Metropolitan Area*

**1601 West 41st St. Baltimore, MD 21211**

## Pictures



**Jim Chivers**  
**Gold And Company, LLC**  
**5601 Newbury St.**  
**Baltimore, MD 21209**

**[www.goldcommercial.net](http://www.goldcommercial.net)**  
**410.578.1300**

This property offering is subject to change without notice. All information is deemed reliable but not guaranteed.



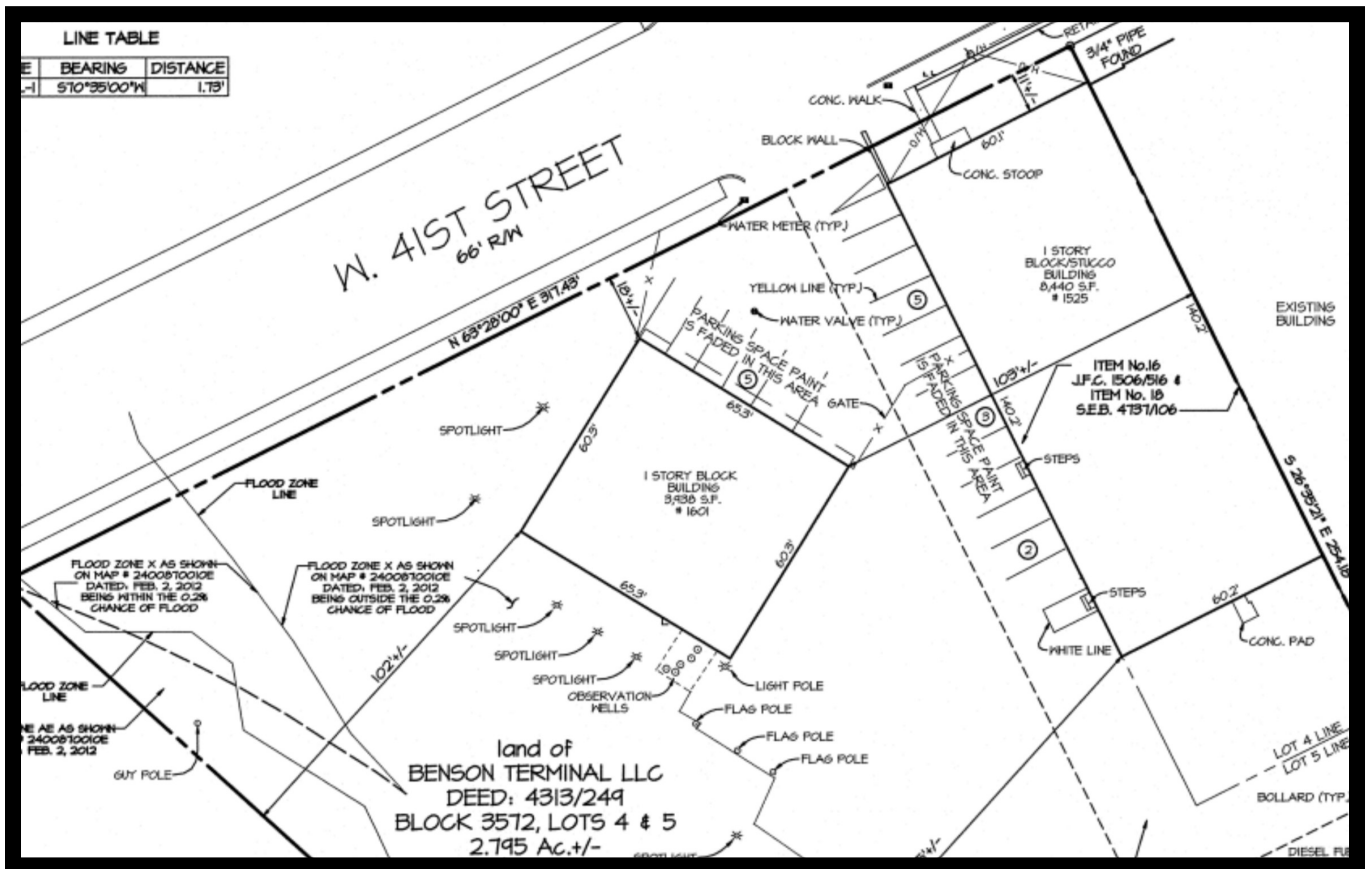


# Gold And Company

Commercial Real Estate in the Baltimore Metropolitan Area

1601 West 41st St. Baltimore, MD 21211

## Survey



Jim Chivers  
Gold And Company, LLC  
5601 Newbury St.  
Baltimore, MD 21209

[www.goldcommercial.net](http://www.goldcommercial.net)  
410.578.1300

This property offering is subject to change without notice. All information is deemed reliable but not guaranteed.



# Gold And Company

*Commercial Real Estate in the Baltimore Metropolitan Area*

**1601 West 41st St. Baltimore, MD 21211**

## Aerial



**Jim Chivers**  
**Gold And Company, LLC**  
**5601 Newbury St.**  
**Baltimore, MD 21209**

**[www.goldcommercial.net](http://www.goldcommercial.net)**  
**410.578.1300**

This property offering is subject to change without notice. All information is deemed reliable but not guaranteed.