



# **GOLD AND COMPANY, LLC**

**WWW.GOLDCOMMERCIAL.NET**

***Commercial Real Estate in the Baltimore Metropolitan Area***



## **1518 W. Baltimore St. Baltimore, MD 21223**

**Jim Chivers**  
**443.928.7522 cell**  
**[jim@goldcommercial.net](mailto:jim@goldcommercial.net)**

**5601 Newbury St.**  
**Baltimore, MD 21209**

**[www.goldcommercial.net](http://www.goldcommercial.net)**

- **+/- 18,000 sf Building Available FOR SALE / LEASE**
- **Former Capitol Theater**
- **West Baltimore City**
- **Franklin Square Neighborhood**
- **Located in HUB Zone**
- **+/- 26'-30'+ Ceiling Height—Mostly Column Free**
- **Mezzanine Area**
- **Community Redevelopment Throughout**
- **Call For More Information**

This property offering is subject to change without notice. All information is deemed reliable but not guaranteed.



# Gold And Company

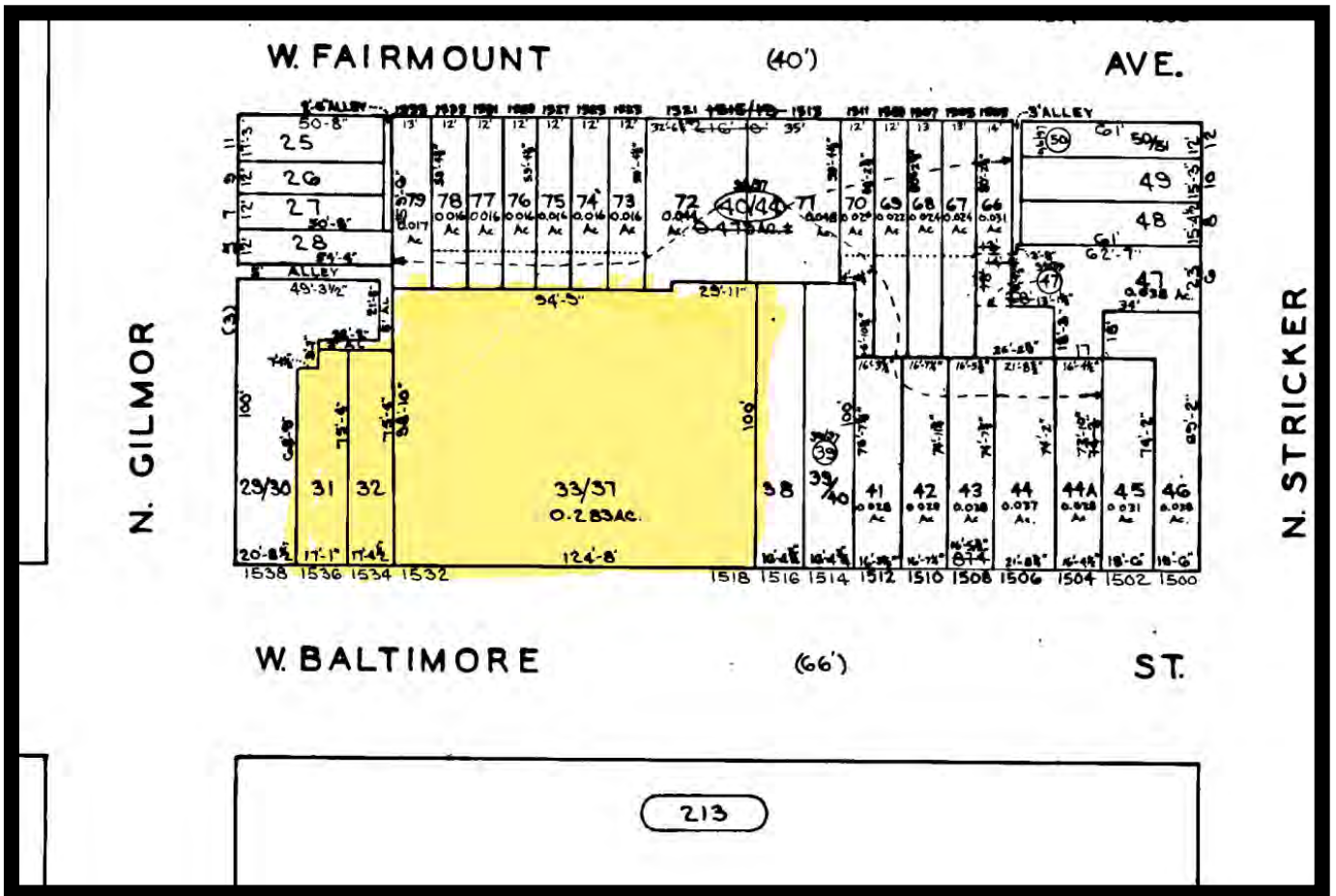
Commercial Real Estate in the Baltimore Metropolitan Area

Jim Chivers: 410.578.1300

[jim@goldcommercial.net](mailto:jim@goldcommercial.net)

**1518 W. Baltimore St. Baltimore, MD 21223**

## Block Map



**Jim Chivers**  
**Gold And Company, LLC**  
**5601 Newbury St.**  
**Baltimore, MD 21209**

**410.578.1300 (Office)**  
**[www.goldcommercial.net](http://www.goldcommercial.net)**

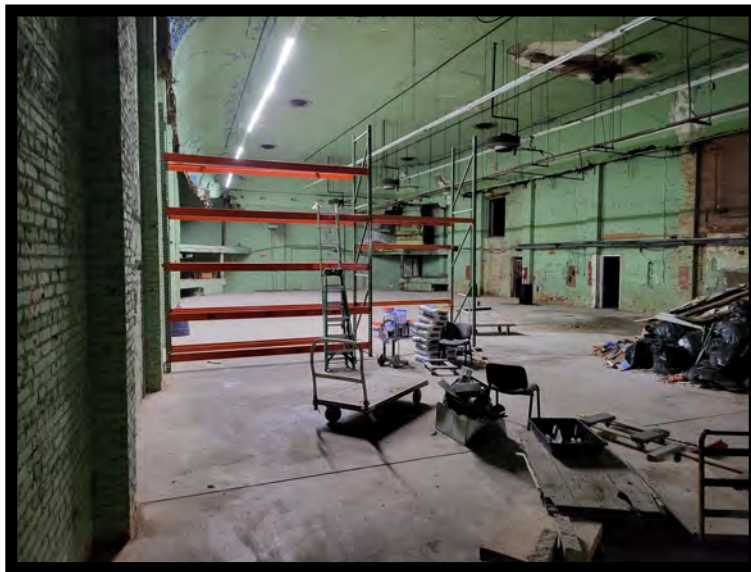
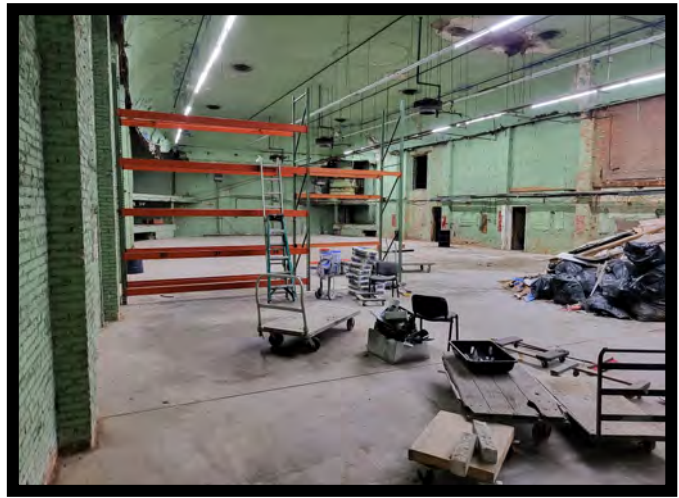


# Gold And Company

*Commercial Real Estate in the Baltimore Metropolitan Area*

**1518 W. Baltimore St. Baltimore, MD**

## Interior Pictures



**Gold And Company, LLC**  
**5601 Newbury St.**  
**Baltimore, MD 21209**

**410.578.1300 (Office)**  
**[www.goldcommercial.net](http://www.goldcommercial.net)**