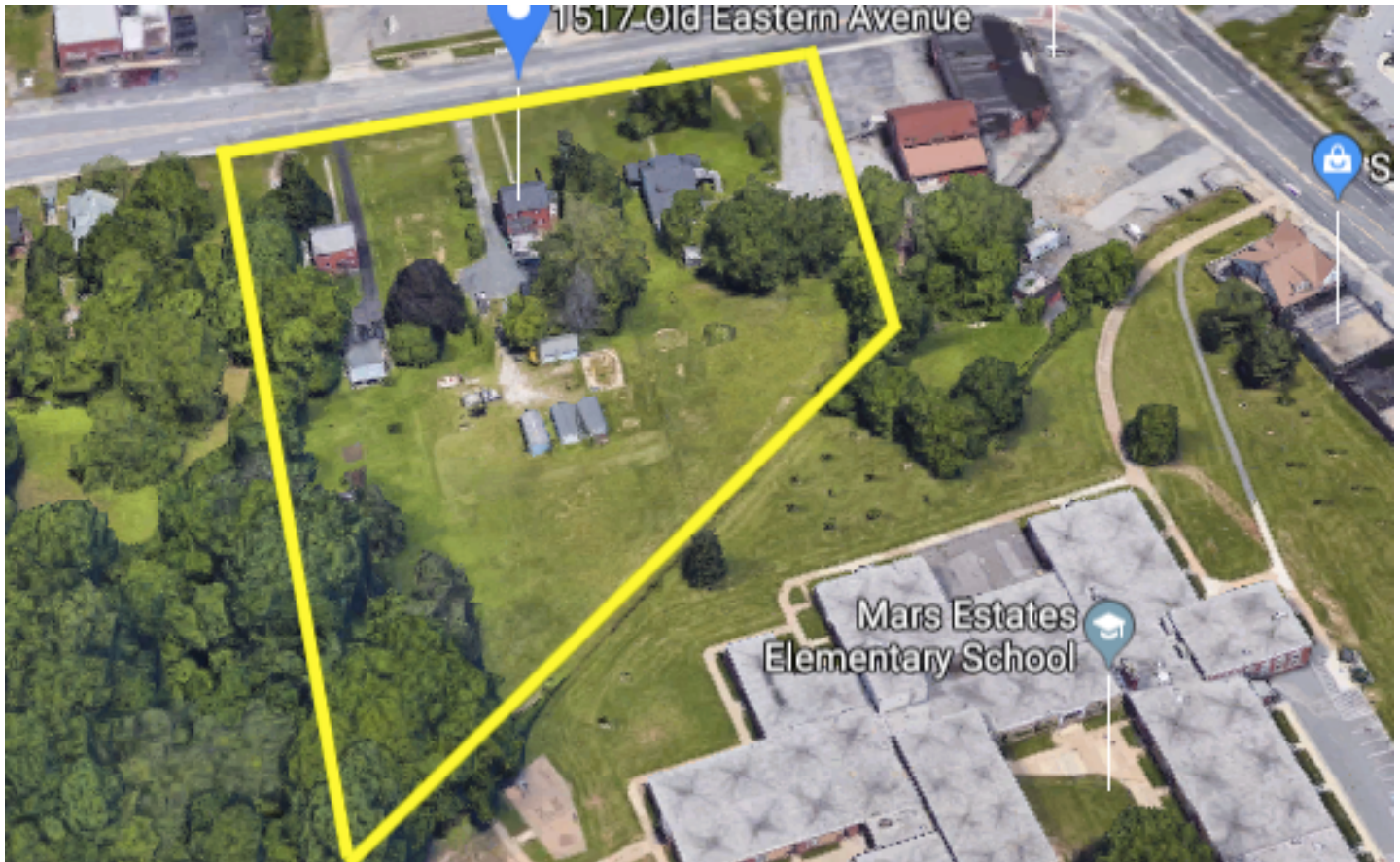




# **GOLD AND COMPANY, LLC**

**1513-1517-1519 Old Eastern Ave. Baltimore, MD 21221**

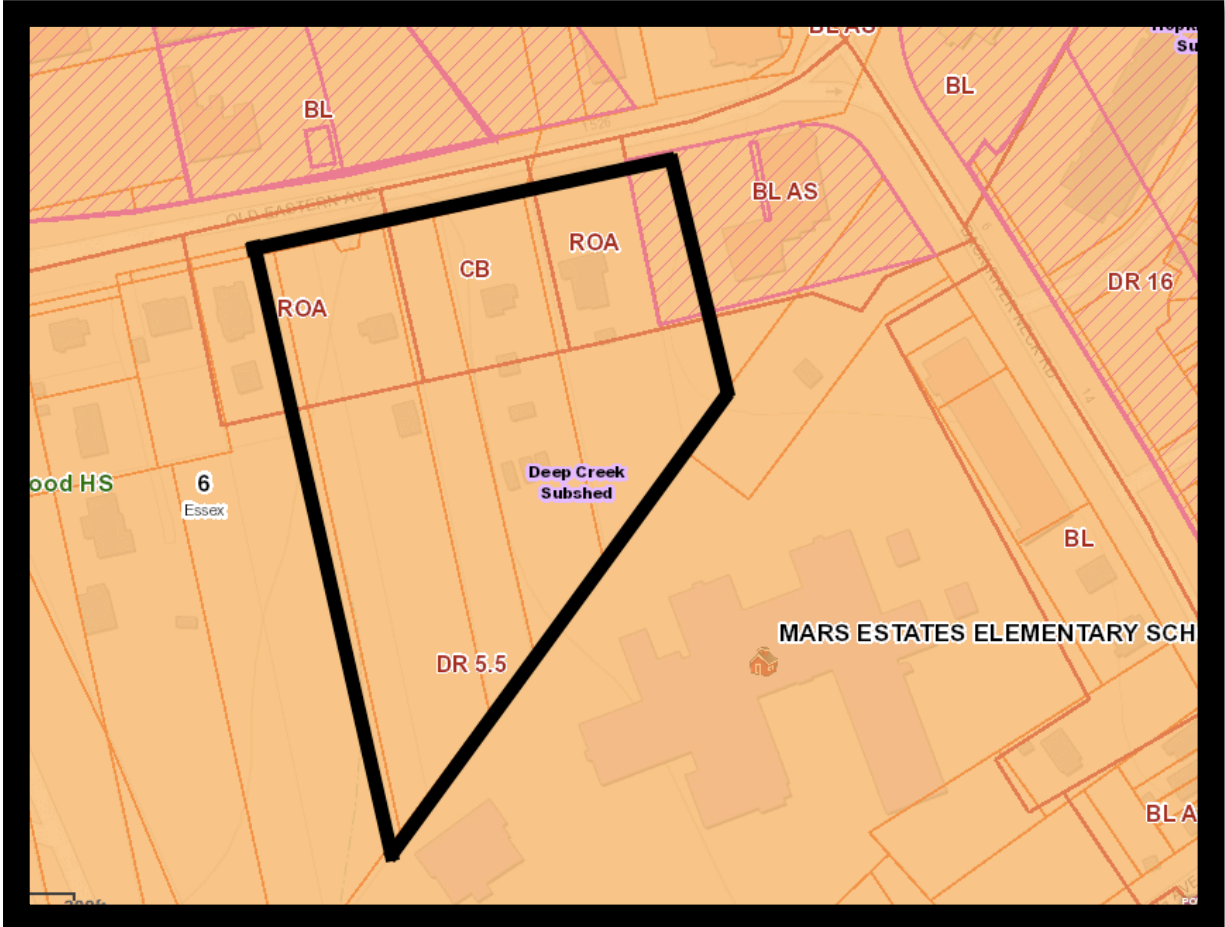


**Gold and  
Company, LLC**  
5601 Newbury St.  
Baltimore, MD 21209

Gary Glover/Mitch Gold  
Jim Chivers  
410.578.1300  
[Goldcommercial.net](http://Goldcommercial.net)

- **+/- 4.49 Acre Assemblage FOR SALE**
- **Perfect for Senior Housing**
- **Planned Unit Development Nearly In-Place**
- **Build Approximately 85 Units**
- **Located in an Opportunity Zone**
- **East Baltimore County Submarket**
- **Near Local Shopping and Public Transportation**

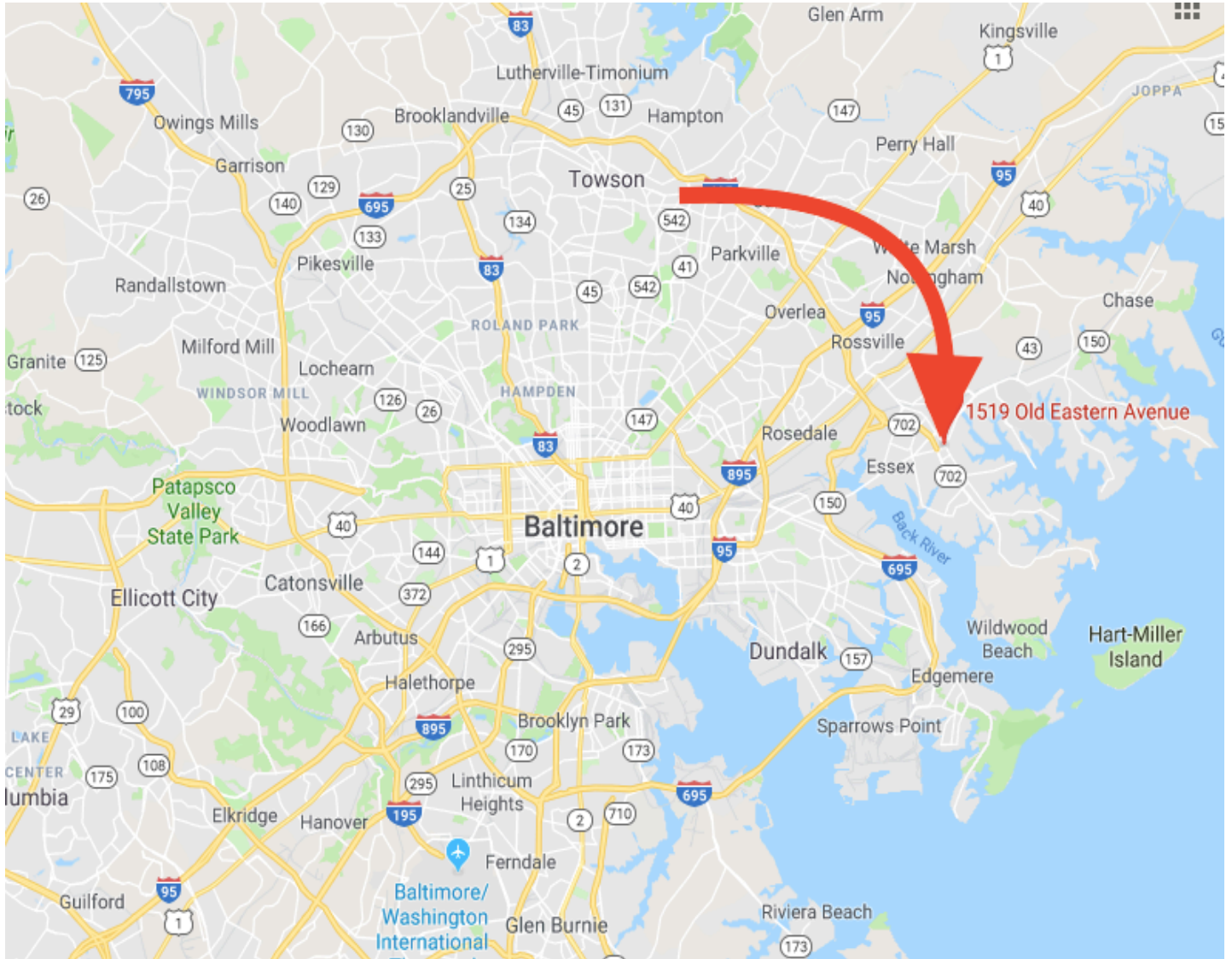
**1513-1517-1519 Old Eastern Ave. Baltimore, MD 21221**



**Gold and  
Company, LLC  
5601 Newbury St.  
Baltimore, MD 21209**

**Gary Glover/Mitch Gold  
Jim Chivers  
410.578.1300  
[Goldcommercial.net](http://Goldcommercial.net)**

**1513-1517-1519 Old Eastern Ave. Baltimore, MD 21221**



**Gold and  
Company, LLC**  
**5601 Newbury St.**  
**Baltimore, MD 21209**  
**Gary Glover/Mitch Gold**  
**Jim Chivers**  
**410.578.1300**  
**[Goldcommercial.net](http://Goldcommercial.net)**