



GOLD AND COMPANY, LLC



500 South Fulton Ave. Baltimore, MD 21223

Gold And Company, LLC

**5601 Newbury St.
Baltimore, MD 21209**

Jim Chivers
jim@goldcommercial.net
443.928.7522 Cell

Mitch Gold
mitch@goldcommercial.net
410.456.2492 Cell

Alex Simone
Alex@goldcommercial.net
410.517.1761

Office: 410.578.1300
www.goldcommercial.net

- **Industrial / Food Processing Facility**
- **FOR SALE**
- **+/- 30,000 sf Warehouse**
- **Air Conditioned Warehouse**
- **Heavy Power**
- **Interior Loading Docks**
- **+/- 14-16' Ceiling Height**
- **Close Access to I-95**
- **I-MU Zoning**
- **Call For More Information**

This property offering is subject to change without notice. All information is deemed reliable but not guaranteed.

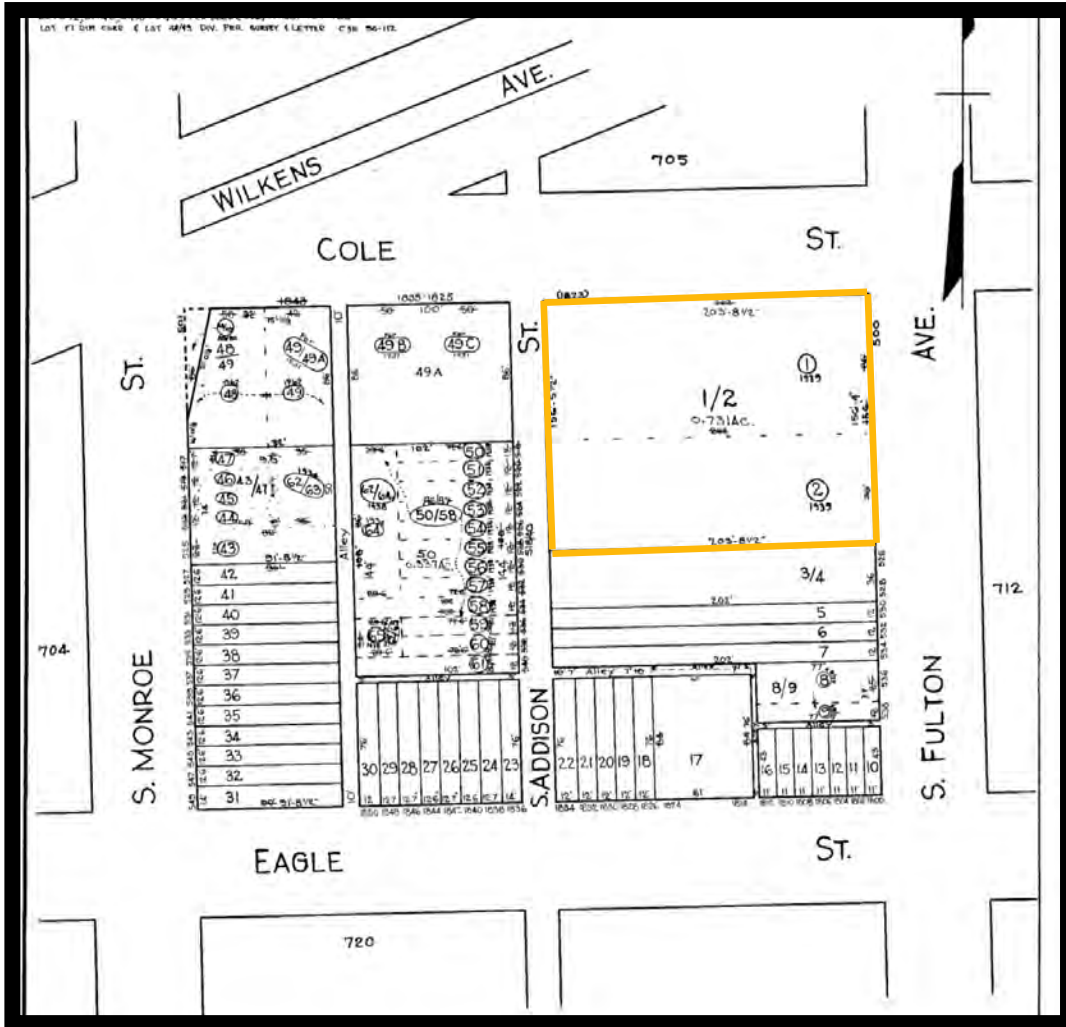


Gold And Company

Commercial Real Estate in the Baltimore Metropolitan Area

500 South Fulton Ave. Baltimore, MD 21223

Block Map



Jim Chivers / Mitch Gold / Alex Simone
Gold And Company, LLC
5601 Newbury St.
Baltimore, MD 21209

www.goldcommercial.net
410.578.1300

This property offering is subject to change without notice. All information is deemed reliable but not guaranteed.

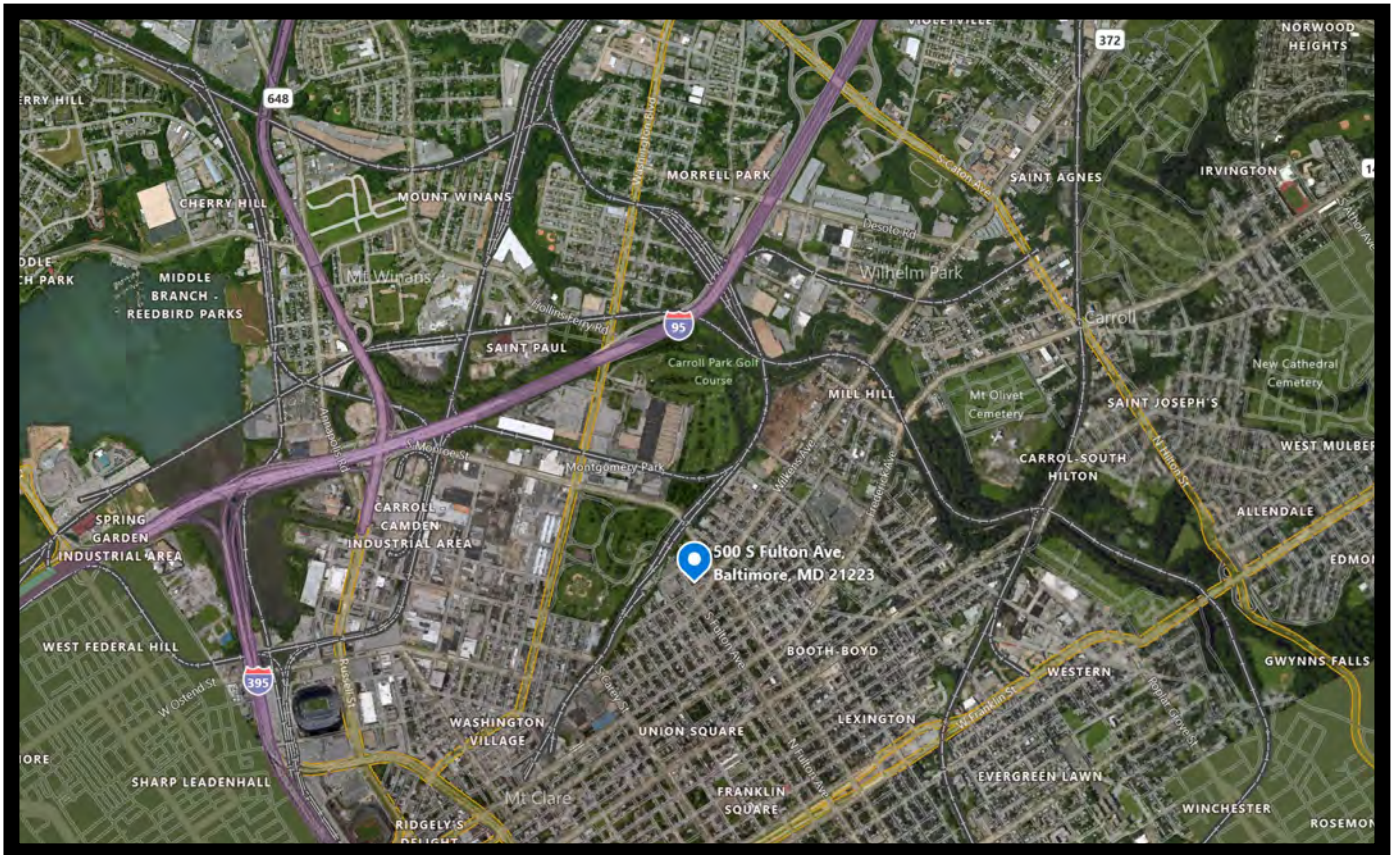


Gold And Company

Commercial Real Estate in the Baltimore Metropolitan Area

500 South Fulton Ave. Baltimore, MD 21223

Aerial



Jim Chivers / Mitch Gold / Alex Simone
Gold And Company, LLC
5601 Newbury St.
Baltimore, MD 21209

www.goldcommercial.net
410.578.1300

This property offering is subject to change without notice. All information is deemed reliable but not guaranteed.