



GOLD AND COMPANY, LLC



3530 S Hanover St. Baltimore, MD 21225

Gold And Company, LLC

5601 Newbury St.
Baltimore, MD 21209

Jim Chivers
jim@goldcommercial.net
443.928.7522 Cell

Mitch Gold
mitch@goldcommercial.net
410.456.2492 Cell

Office: 410.578.1300
www.goldcommercial.net

- +/- 12,500 sf Building Available FOR SALE
- 0.37 Acre Total Land Area
- Fenced and Lit Off-Street Parking
- Drive-In Door
- Office / Showroom Area
- Baltimore City
- I-MU Zoning
- Exposure from I-895 (Signage)
- Excellent Access to all Main Interstates
- Call For More Information

This property offering is subject to change without notice. All information is deemed reliable but not guaranteed.

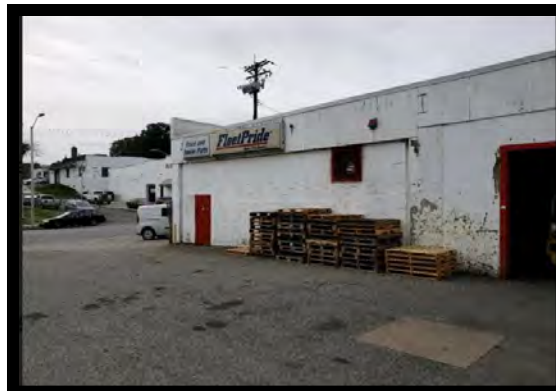
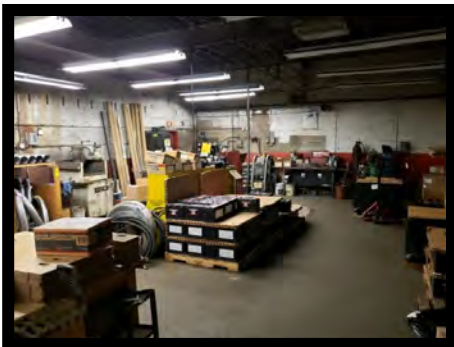


Gold And Company

Commercial Real Estate in the Baltimore Metropolitan Area

3530 S Hanover St. Baltimore, MD 21225

Interior Photos



Jim Chivers / Mitch Gold
Gold And Company, LLC
5601 Newbury St.
Baltimore, MD 21209

www.goldcommercial.net
410.578.1300

This property offering is subject to change without notice. All information is deemed reliable but not guaranteed.

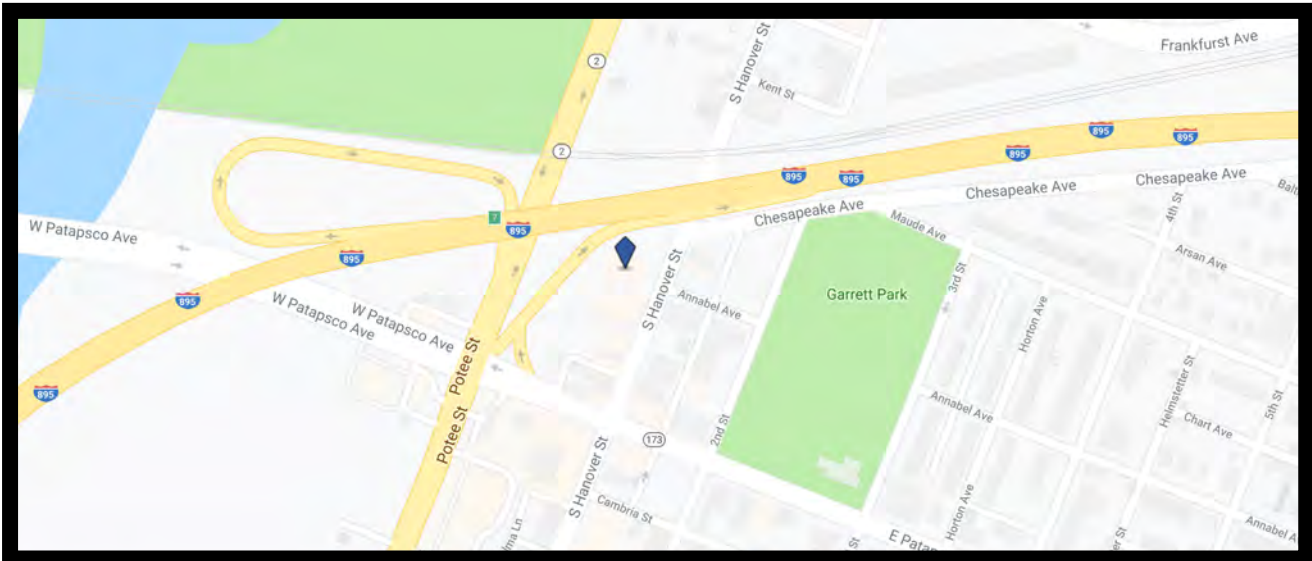


Gold And Company

Commercial Real Estate in the Baltimore Metropolitan Area

3530 S Hanover St. Baltimore, MD 21225

Main Picture and Aerial



Jim Chivers / Mitch Gold
Gold And Company, LLC
5601 Newbury St.
Baltimore, MD 21209

www.goldcommercial.net
410.578.1300

This property offering is subject to change without notice. All information is deemed reliable but not guaranteed.