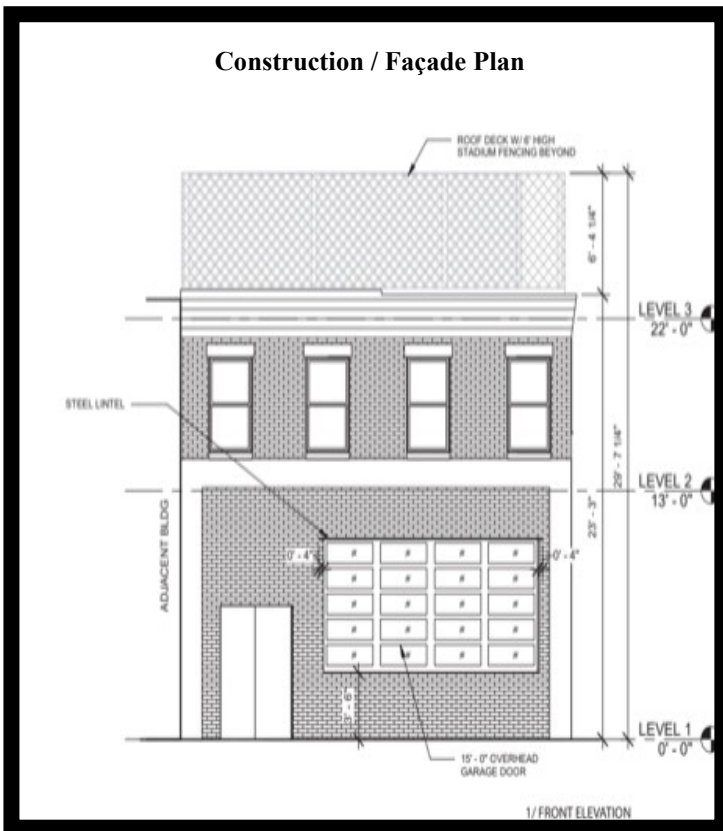




GOLD AND COMPANY, LLC



2716 Pulaski Hwy., Baltimore, MD 21224

Gold And Company, LLC

5601 Newbury St.
Baltimore, MD 21209
www.goldcommercial.net

Jim Chivers
443.928.7522 Cell
Jim@goldcommercial.net

Alex Simone
443.845.4413
Alex@goldcommercial.net

- **Office Building Available FOR SALE**
- **Complete Renovation—New Roof, Plumbing, Electrical, and HVAC Systems, etc...**
- **+/- 3,000 sf**
- **Roof Deck**
- **C-1 Zoning (Baltimore City Commercial Zoning)**
- **Open Floor Plan with Office Buildout**
- **2 Levels**
- **Architects Drawings Available**
- **Call For More Information**

This property offering is subject to change without notice. All information is deemed reliable but not guaranteed.

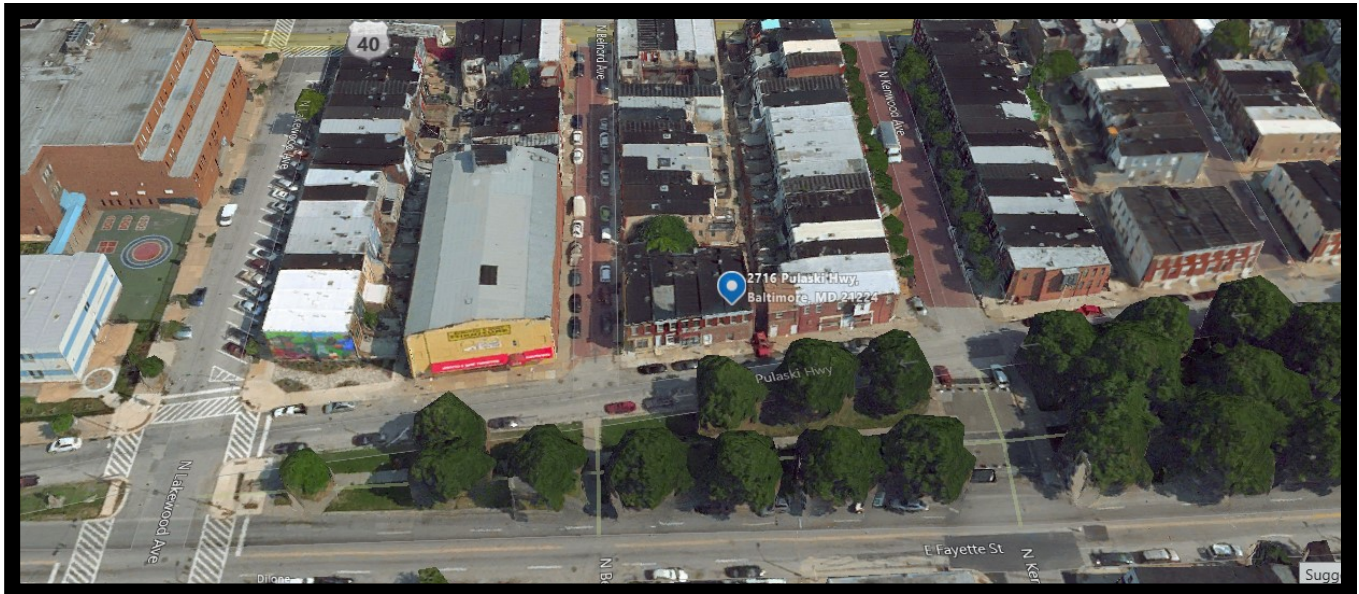
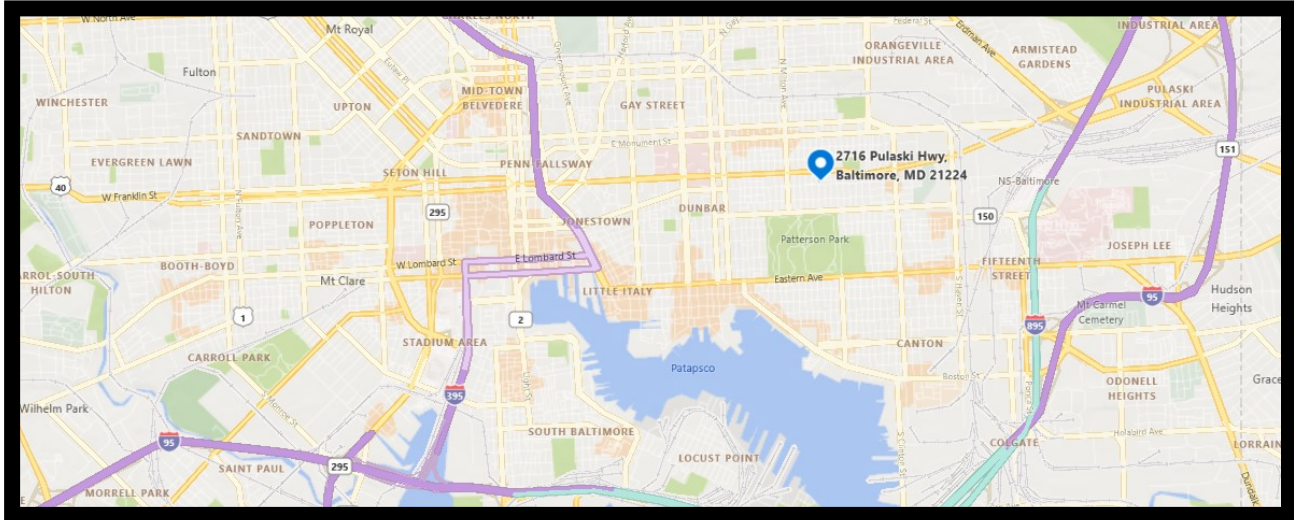


Gold And Company

Commercial Real Estate in the Baltimore Metropolitan Area

2716 Pulaski Hwy., Baltimore, MD 21224

Aerial and Map



Jim Chivers / Alex Simone
Gold And Company, LLC
5601 Newbury St.
Baltimore, MD 21209

410.578.1300 (Office)
www.goldcommercial.net