



GOLD AND COMPANY, LLC



3711, 3713, and 3715 E Baltimore St. Baltimore, MD 21224

Gold And Company, LLC

**5601 Newbury St.
Baltimore, MD 21209**

**Jim Chivers
443.928.7522 Cell
Jim@goldcommercial.net
www.goldcommercial.net**

- **3 Parcels For Sale**
- **Located On East Baltimore Street**
- **I-1 Zoning—Industrial**
- **Near New Development on Haven St.**
- **+/- 4,100 sf of Total Buildings in 3 Structures**
- **+/- 7,000 sf of Total Land Area**
- **Off Street Parking Area**
- **Adjacent to Vacarro's & Lord Baltimore Uniform Company**
- **Partially Leased**
- **Call For More Information**

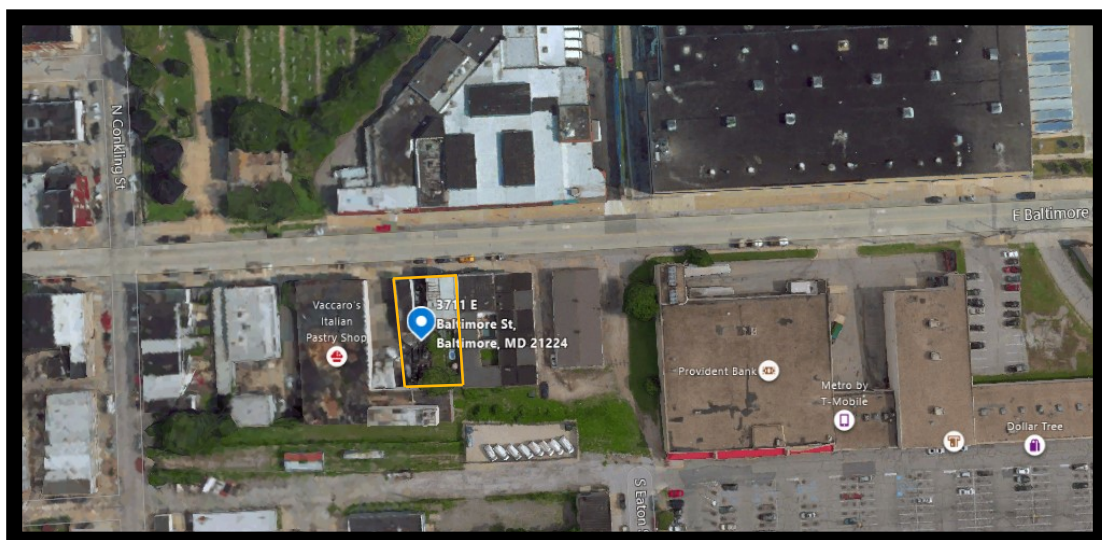
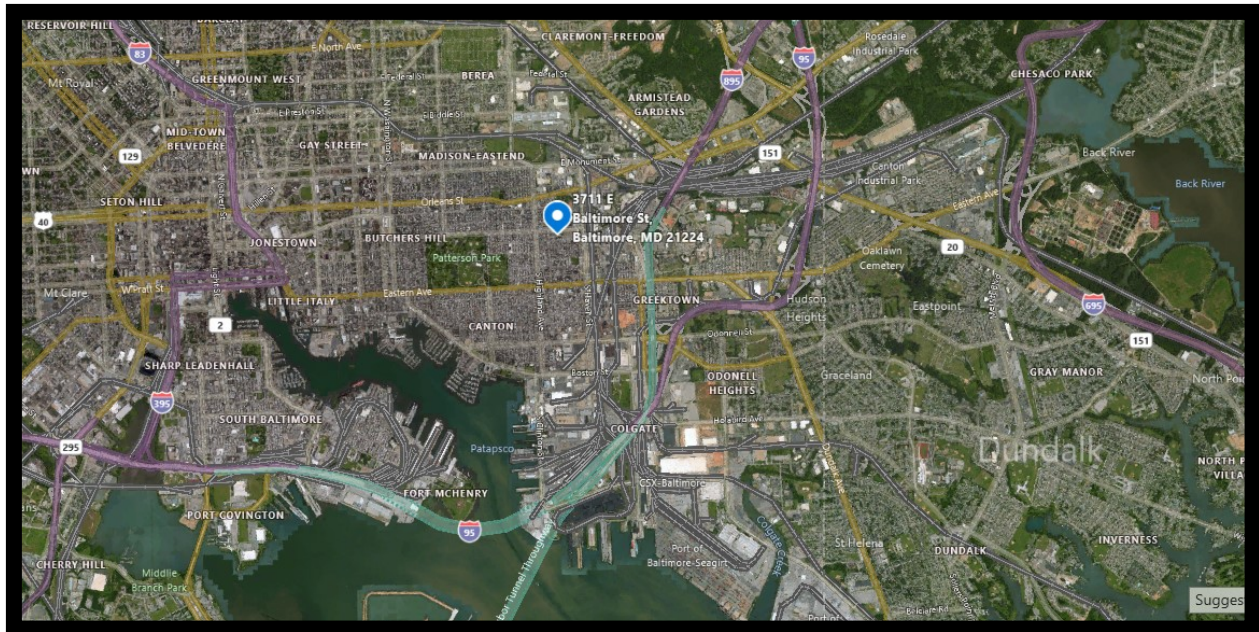
This property offering is subject to change without notice. All information is deemed reliable but not guaranteed.

Gold And Company

Commercial Real Estate in the Baltimore Metropolitan Area

3711, 3713, and 3715 E Baltimore St. Baltimore, MD 21224

Aerial and Map



Jim Chivers
Gold And Company, LLC
5601 Newbury St.
Baltimore, MD 21209

410.578.1300 (Office)
www.goldcommercial.net