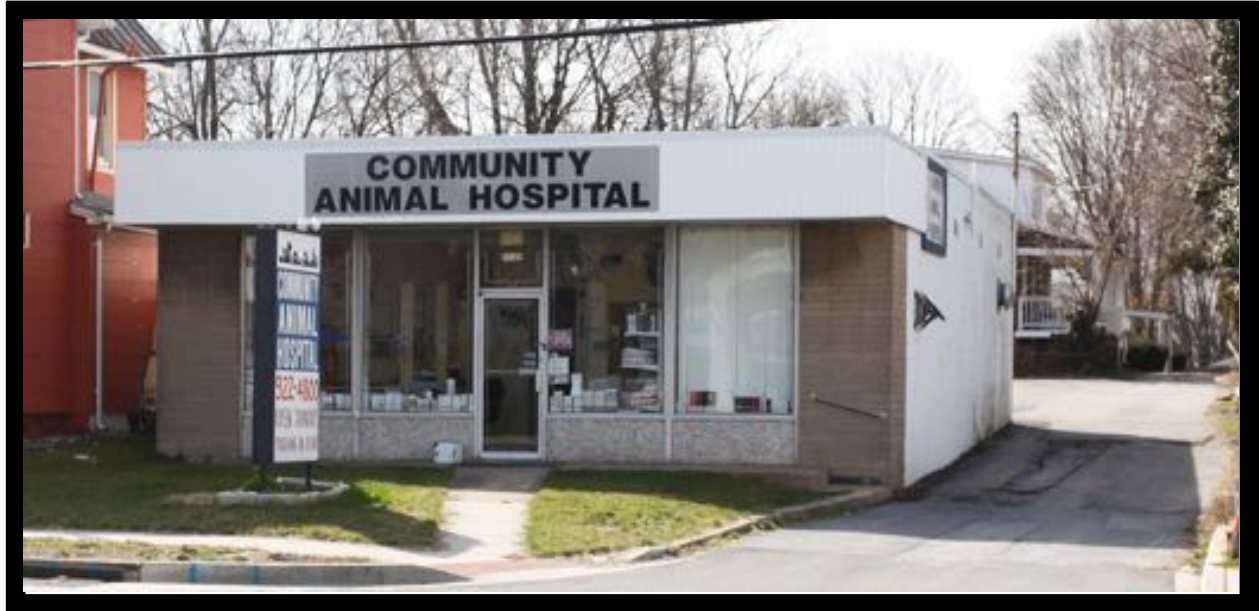




GOLD AND COMPANY, LLC



9035 Liberty Road, Randallstown, MD 21133

Gold and Company, LLC

**5601 Newbury St.
Baltimore, MD 21209**

**Mitch Gold
410.456.2492
Gary@goldcommercial.net**

**Alex Simone
443.845.4413
Alex@goldcommercial.net**

**Office: 410.578.1300
www.goldcommercial.net**

- **Turnkey veterinarian clinic for sale**
- **Business and real estate**
- **1,700 sf w/ 9 parking spaces**
- **35,000+ daily traffic count**
- **All veterinary equipment included**
 - **UxUniversal Uni-Matic 325 x-ray machine**
- **\$81,000+ median family income within 3 miles**
- **Next door to brand new Royal Farms gas and c-store**



Gold and Company

Commercial Real Estate in the Baltimore Metropolitan Area

9035 Liberty Road, Randallstown, MD 21133



Mitch Gold / Alex Simone
Gold and Company, LLC
5601 Newbury St.
Baltimore, MD 21209

410.578.1300
www.goldcommercial.net

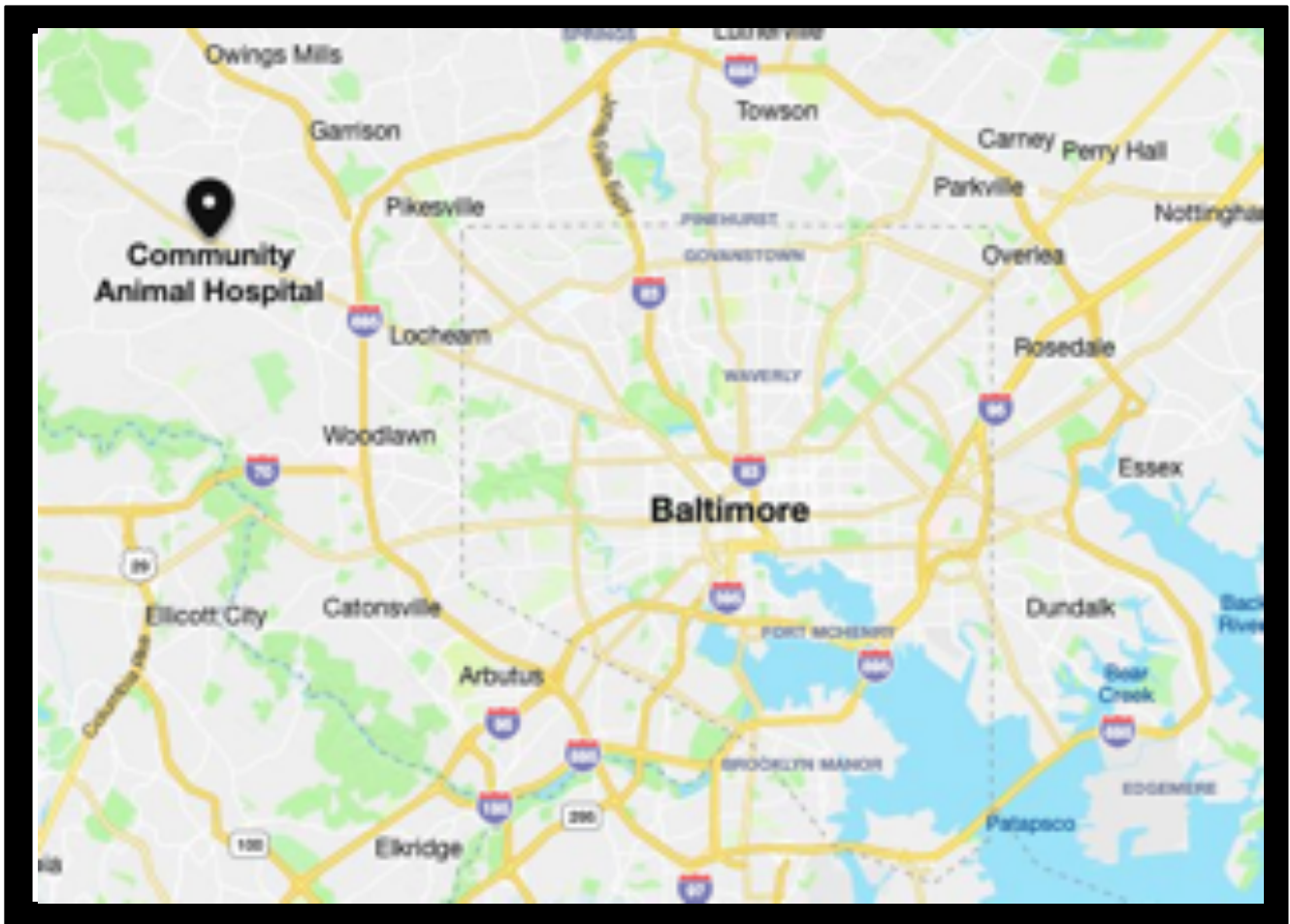


Est. 1999

Gold and Company

Commercial Real Estate in the Baltimore Metropolitan Area

9035 Liberty Road, Randallstown, MD 21133



Mitch Gold / Alex Simone
Gold and Company, LLC
5601 Newbury St.
Baltimore, MD 21209

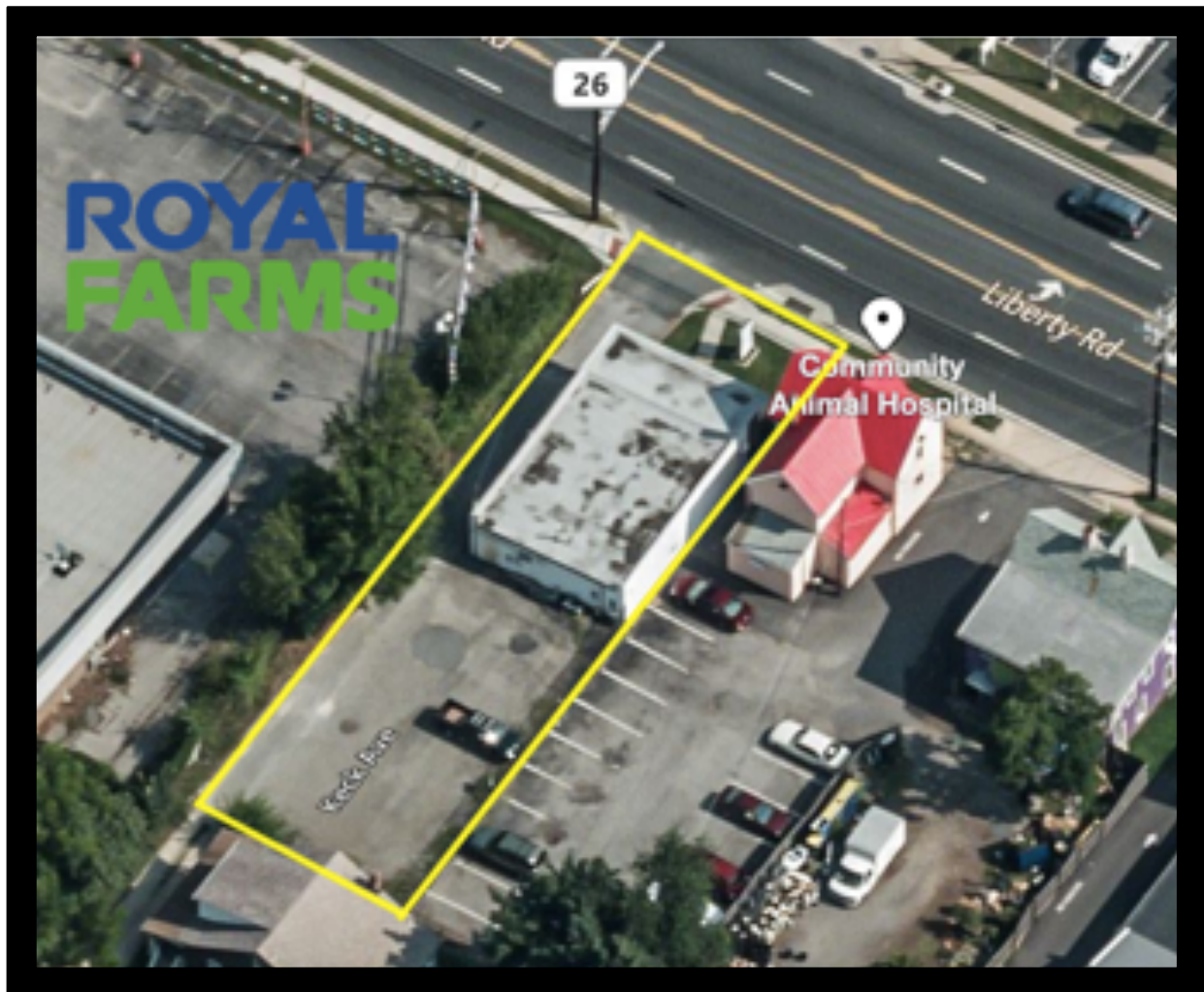
410.578.1300
www.goldcommercial.net



Gold and Company

Commercial Real Estate in the Baltimore Metropolitan Area

9035 Liberty Road, Randallstown, MD 21133



Mitch Gold / Alex Simone
Gold and Company, LLC
5601 Newbury St.
Baltimore, MD 21209

410.578.1300
www.goldcommercial.net