



GOLD AND COMPANY, LLC



3511 8th Ave. Baltimore, MD 21226

Gold And Company, LLC

**5601 Newbury St.
Baltimore, MD 21209**

**Jim Chivers
jim@goldcommercial.net**

**Mitch Gold
mitch@goldcommercial.net**

**Office: 410.578.1300
www.goldcommercial.net**

- **Flex Building Available Lease / Sale**
- **+/- 7,500 sf**
- **5 Drive-In Doors**
- **3 Phase Power**
- **15-16' Ceiling Height**
- **MI Zoning (Baltimore City)**
- **Partially Leased**
- **Some Seller Financing Available**
- **Call For More Information**

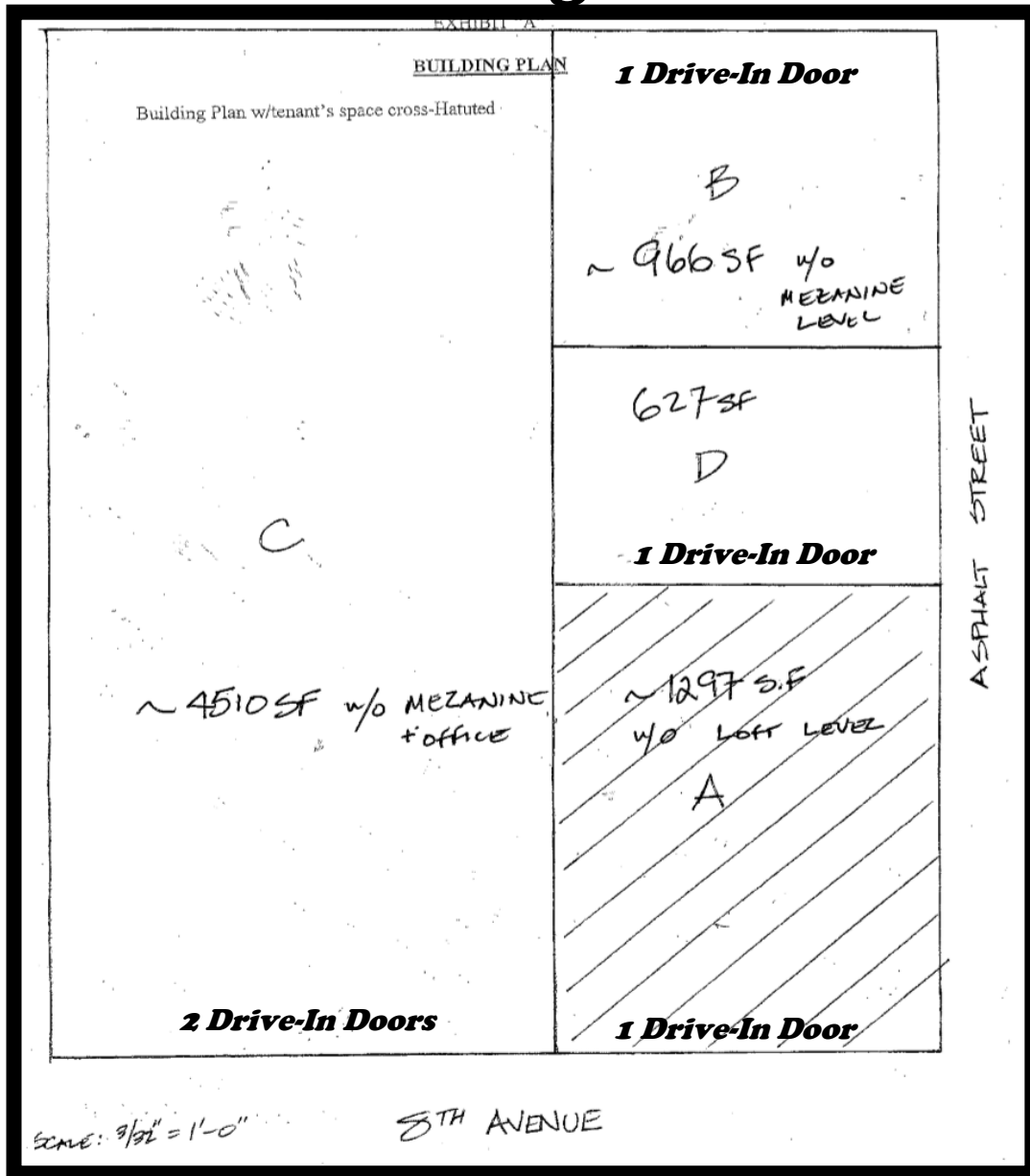


Gold And Company

Commercial Real Estate in the Baltimore Metropolitan Area

3511 8th Ave. Baltimore, MD 21226

Building Plan



Jim Chivers / Mitch Gold
Gold And Company, LLC
5601 Newbury St.
Baltimore, MD 21209

www.goldcommercial.net
410.578.1300

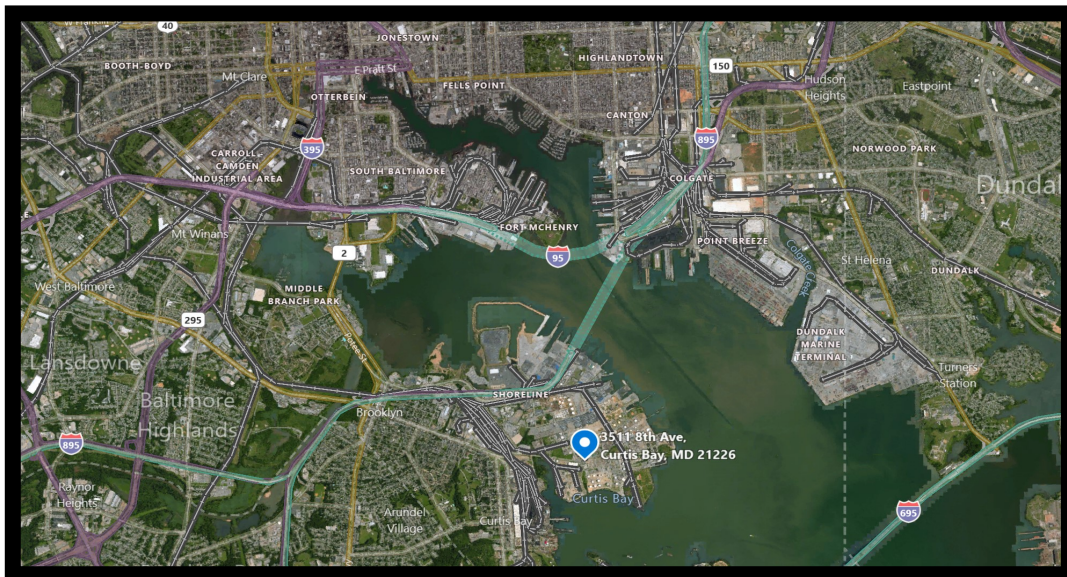
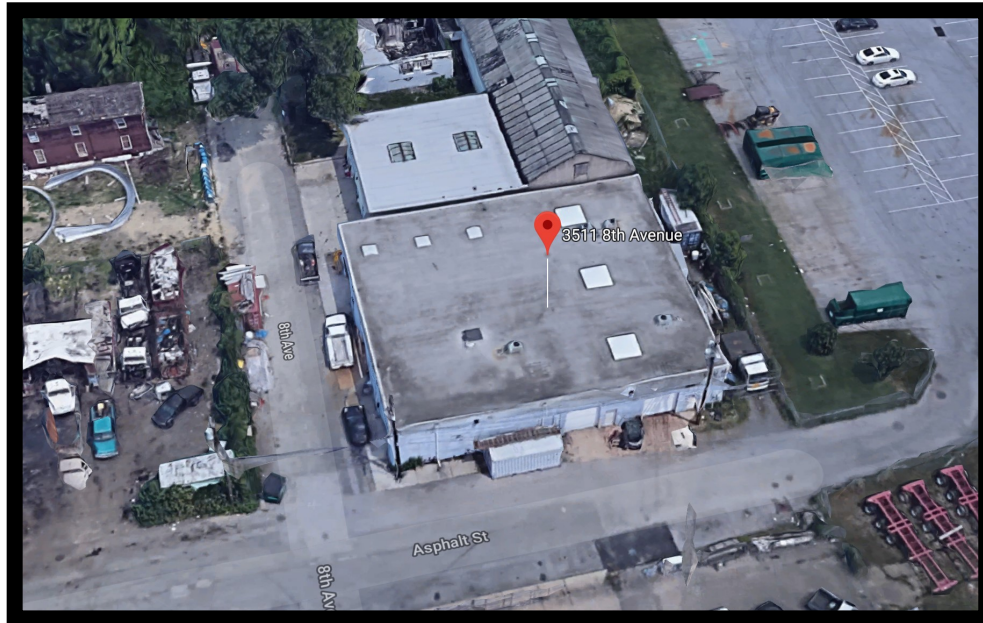


Gold And Company

Commercial Real Estate in the Baltimore Metropolitan Area

3511 8th Ave. Baltimore, MD 21226

Map / Aerial



Jim Chivers / Mitch Gold
Gold And Company, LLC
5601 Newbury St.
Baltimore, MD 21209

www.goldcommercial.net
410.578.1300

This property offering is subject to change without notice. All information is deemed reliable but not guaranteed.