



GOLD AND COMPANY, LLC



720 Debelius Ave., Baltimore, MD 21205

Gold And Company, LLC

**5601 Newbury St.
Baltimore, MD 21209**

Jim Chivers
jim@goldcommercial.net

Office: 410.578.1300
www.goldcommercial.net

- **12,000 SF Flex Space FOR LEASE**
- **Drive-In and Dock Platform Loading**
- **East Baltimore City Submarket**
- **Heavy Power**
- **+/- 16-18' Clear Height**
- **Excellent Visibility—Faces Pulaski Hwy**
- **I-2 Zoning—Heavy Industrial—Baltimore City**
- **Call For More Information**

This property offering is subject to change without notice. All information is deemed reliable but not guaranteed.

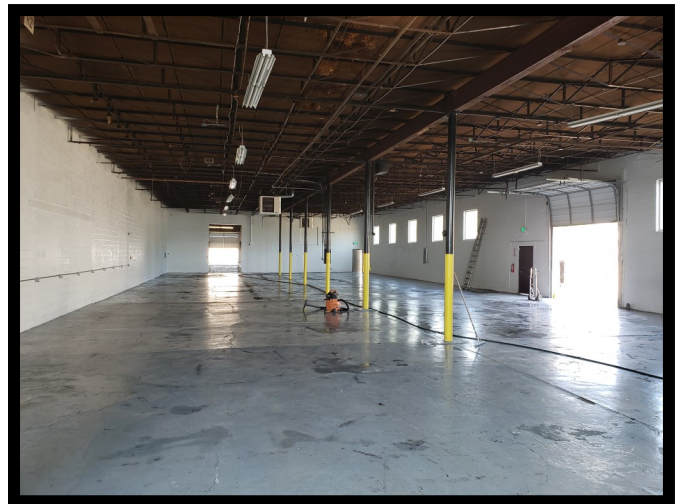


Gold And Company

Commercial Real Estate in the Baltimore Metropolitan Area

720 Debelius Ave., Baltimore, MD 21205

Pictures



Jim Chivers
Gold And Company, LLC
5601 Newbury St.
Baltimore, MD 21209

www.goldcommercial.net
410.578.1300

This property offering is subject to change without notice. All information is deemed reliable but not guaranteed.

