



GOLD AND COMPANY, LLC



4200 Pennington Ave, Baltimore, MD 21226

Gold and Company, LLC

**5601 Newbury St.
Baltimore, MD 21209**

**Alex Simone
443.845.4413
Alex@goldcommercial.net**

**Mitch Gold
410-456-2492
Mitch@goldcommercial.net**

**Office: 410.578.1300
www.goldcommercial.net**

- **Former bank building renovated as office building for owner-user**
- **2000 sf ground floor – 7 offices**
- **Mezzanine level 2000 sf open office**
- **Attached 1200 sf drive-thru butler building w/14' doors**
- **2000 sf finished basement apartment w/separate entrance**
- **6 bathrooms**
- **Zoned OR-1 Office Residential**
- **Ideal for growing construction and service providers in South Baltimore—Anne Arundel County**
- **Convenient to I-895, I-695, I-97**



Gold and Company

Commercial Real Estate in the Baltimore Metropolitan Area

4200 Pennington Ave, Baltimore, MD 21226



**Alex Simone / Mitch Gold
Gold and Company, LLC
5601 Newbury St.
Baltimore, MD 21209**

**410.578.1300
www.goldcommercial.net**



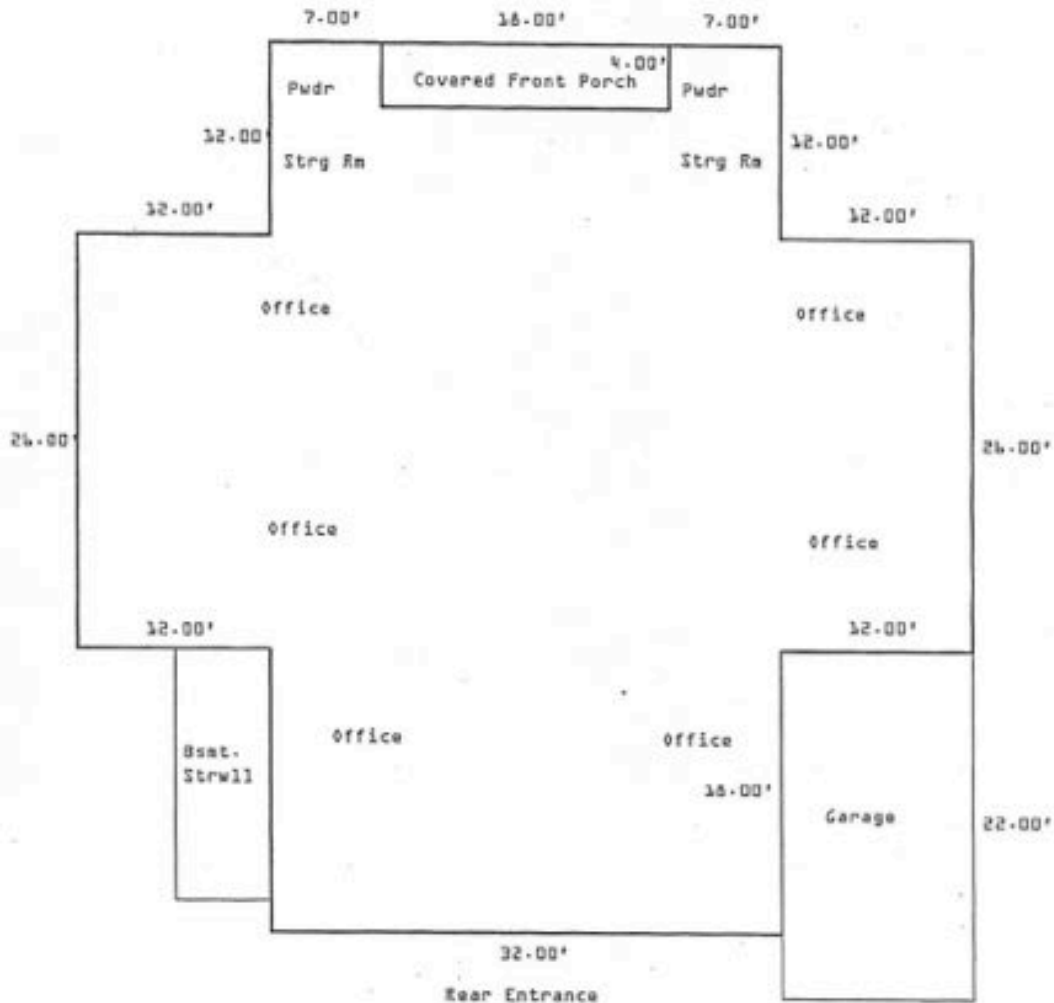
Est. 1999

Gold and Company

Commercial Real Estate in the Baltimore Metropolitan Area

4200 Pennington Ave, Baltimore, MD 21226

BUILDING SKETCH - FIRST FLOOR



Alex Simone / Mitch Gold
Gold and Company, LLC
5601 Newbury St.
Baltimore, MD 21209

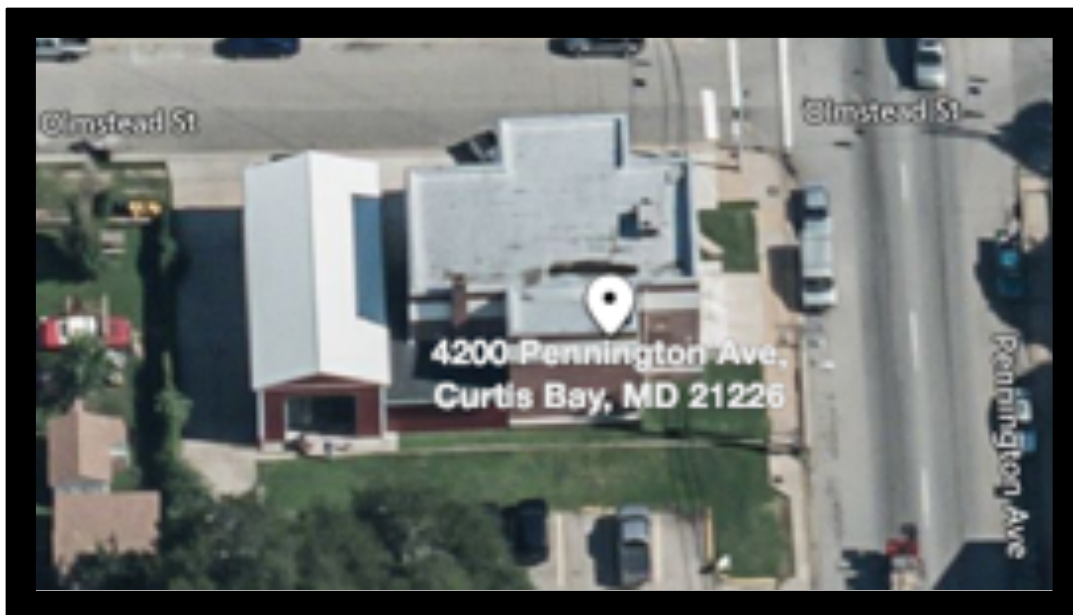
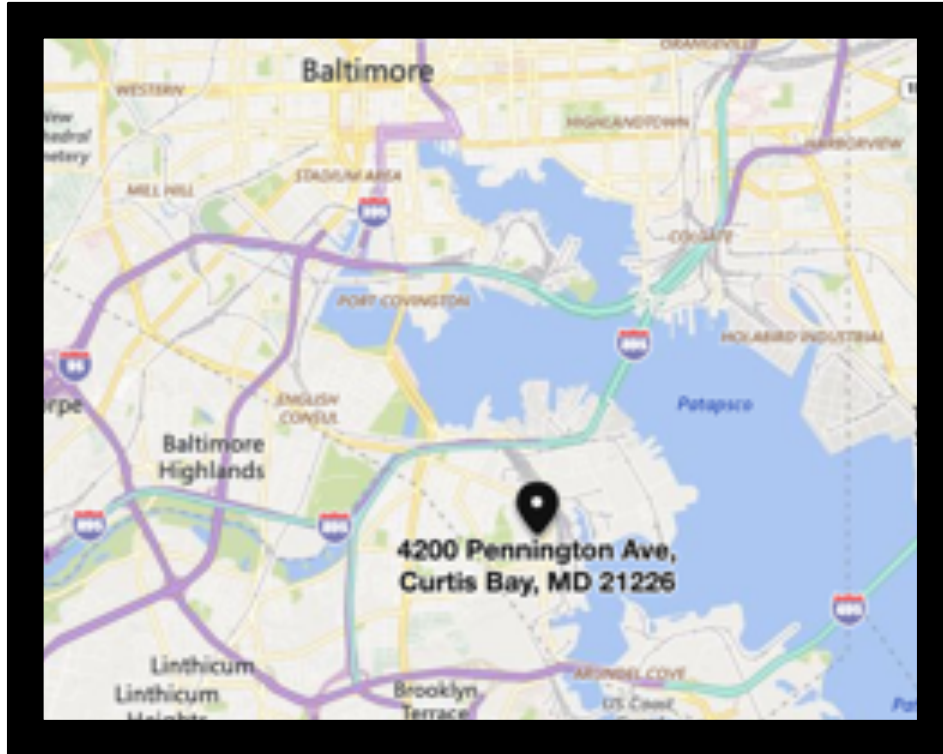
410.578.1300
www.goldcommercial.net



Est. 1999

Gold and Company

Commercial Real Estate in the Baltimore Metropolitan Area



Alex Simone / Mitch Gold
Gold and Company, LLC
5601 Newbury St.
Baltimore, MD 21209

410.578.1300
www.goldcommercial.net