



# **GOLD AND COMPANY, LLC**



**600 W. Patapsco Ave. Baltimore, MD 21225**

## **Gold And Company, LLC**

**5601 Newbury St.  
Baltimore, MD 21209**

**Jim Chivers  
443.928.7522 cell  
jim@goldcommercial.net**

**Mitch Gold  
410.456.2492 cell  
mitch@goldcommercial.net**

**www.goldcommercial.net**

- **Drive-In Flex Building FOR SALE**
- **+/- 11,000 sf**
- **Complete Renovation in 2018**
- **9 Drive-In Doors**
- **Office and Parts Room**
- **14' Ceiling Height**
- **214' Frontage on Patapsco Ave.**
- **0.73 Acre Total Land Area**
- **I-2 Zoning—Industrial**
- **SW Baltimore City Location—Close Access to I-95**
- **Call For More Information**

This property offering is subject to change without notice. All information is deemed reliable but not guaranteed.

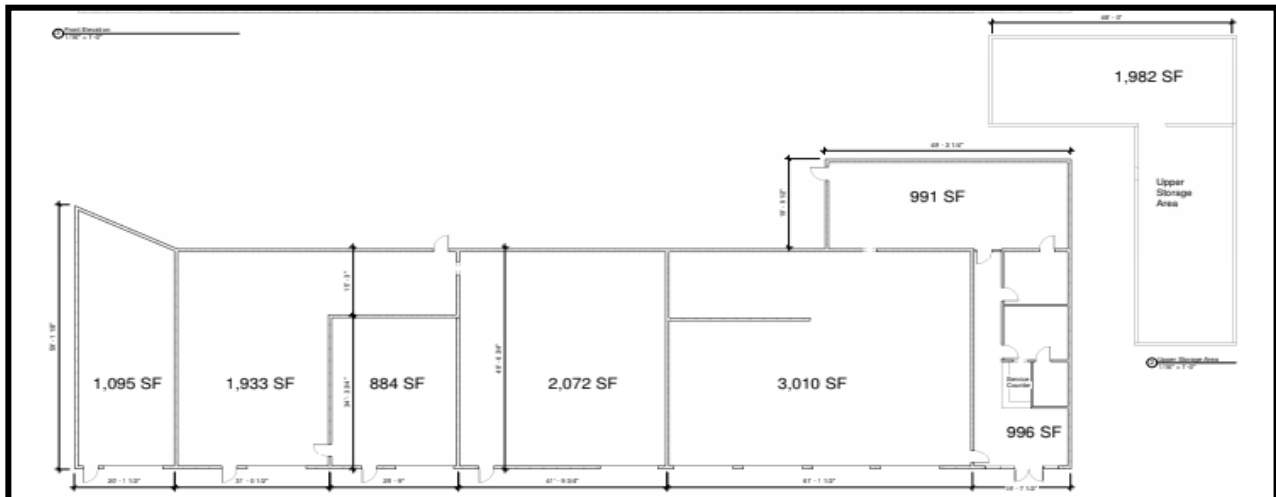
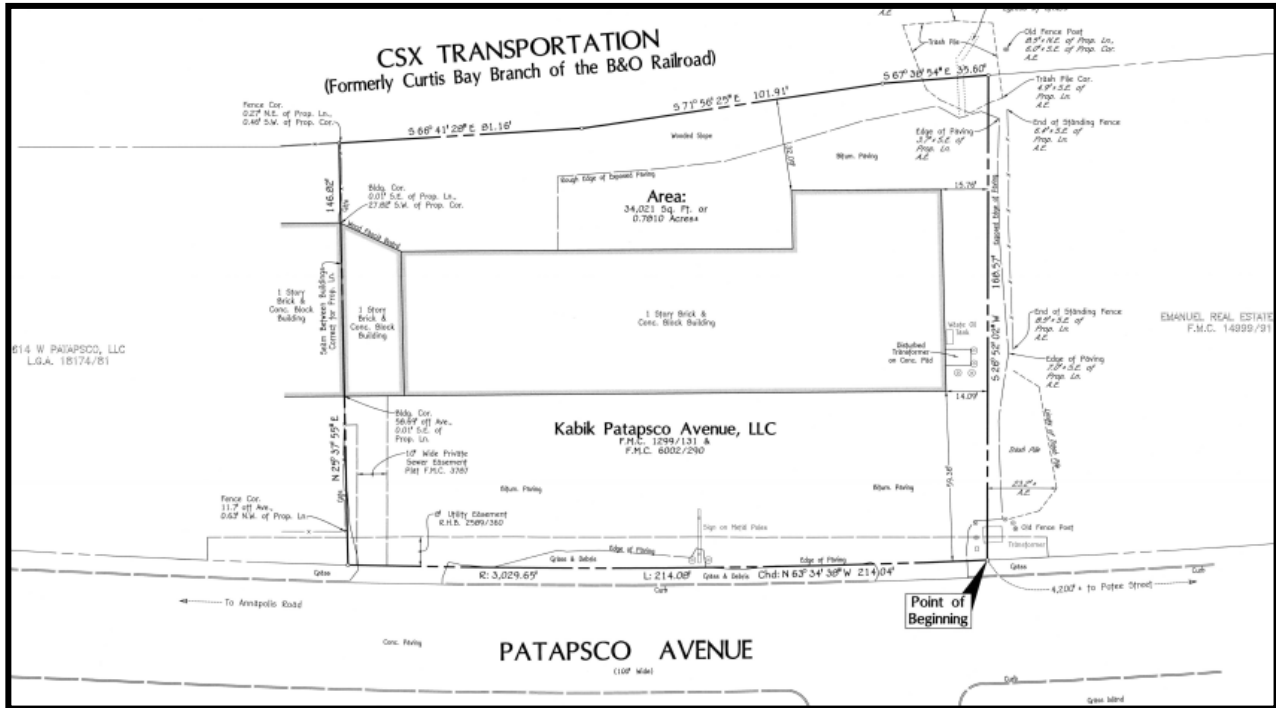


# Gold And Company

*Commercial Real Estate in the Baltimore Metropolitan Area*

**600 W. Patapsco Ave. Baltimore, MD 21225**

## SURVEY & BUILDING PLAN



**Jim Chivers / Mitch Gold**  
**Gold And Company, LLC**  
**5601 Newbury St.**  
**Baltimore, MD 21209**

**410.578.1300 (Office)**

**[www.goldcommercial.net](http://www.goldcommercial.net)**

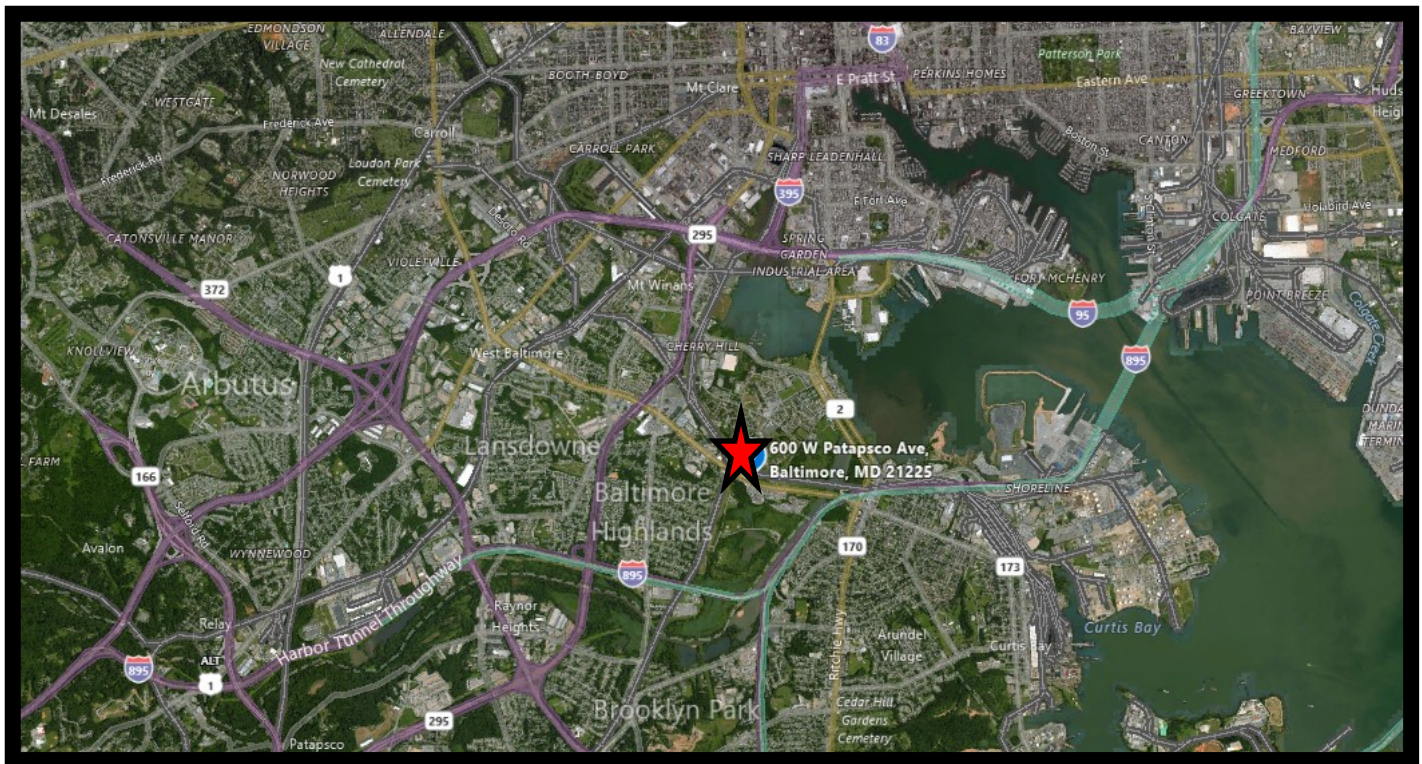


# Gold And Company

*Commercial Real Estate in the Baltimore Metropolitan Area*

## Map

**600 W. Patapsco Ave. Baltimore, MD 21225**



**Jim Chivers / Mitch Gold**  
**Gold And Company, LLC**  
**5601 Newbury St.**  
**Baltimore, MD 21209**

**410.578.1300 (Office)**

**[www.goldcommercial.net](http://www.goldcommercial.net)**