



GOLD AND COMPANY, LLC



4311 Old Milford Mill Rd, Pikesville, MD 21208

Gold and Company, LLC

**5601 Newbury St.
Baltimore, MD 21209**

Mitch Gold
410.456.2492
[**Mitch@goldcommercial.net**](mailto:Mitch@goldcommercial.net)

Alex Simone
443.845.4413
[**Alex@goldcommercial.net**](mailto:Alex@goldcommercial.net)

Office: 410.578.1300
www.goldcommercial.net

- **3,600 sf office/warehouse**
- **Drop ceilings—office space can easily be converted to warehouse**
- **External loading dock**
- **10 parking spaces**
- **ML Zoning – Light Manufacturing**
- **Located in Milford Industrial Area**

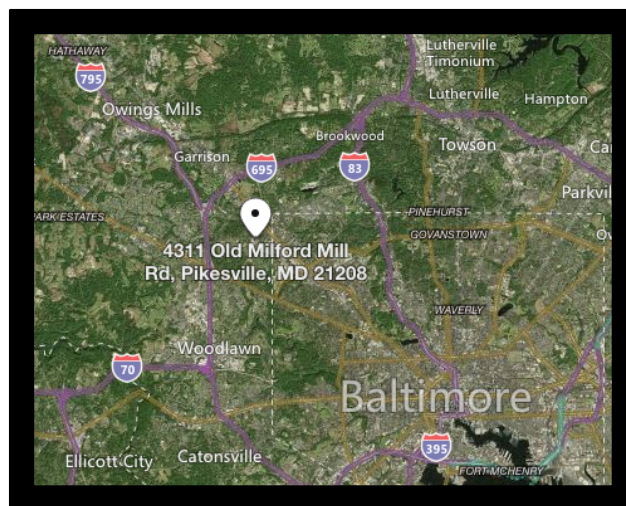
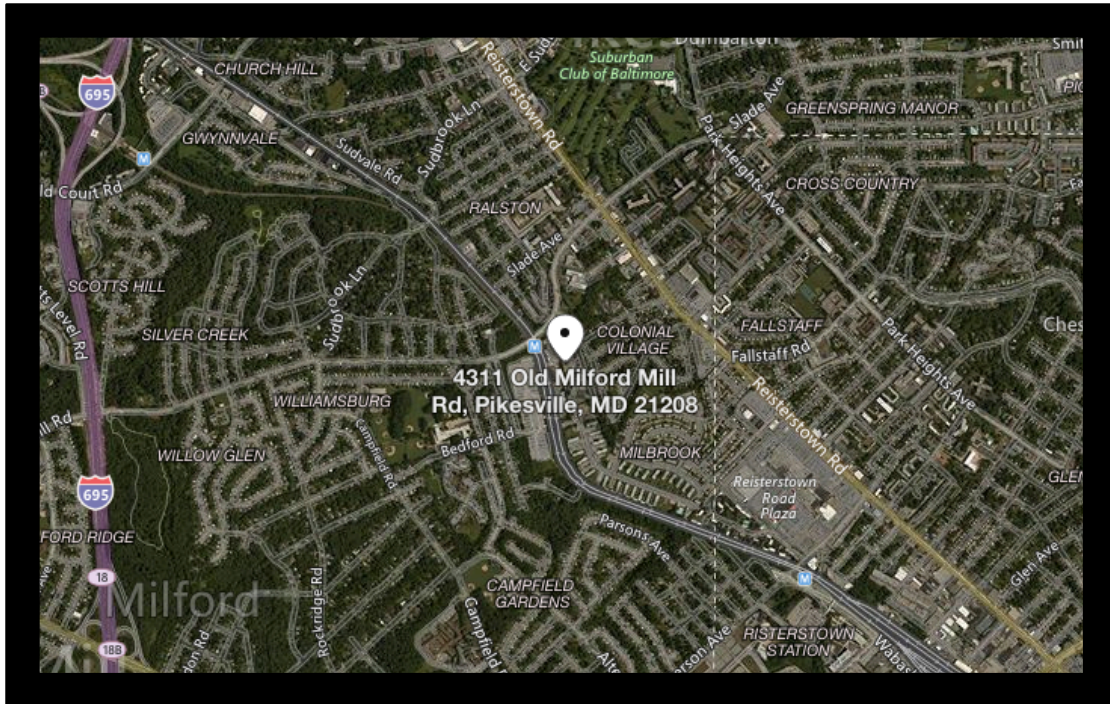


Est. 1999

Gold and Company

Commercial Real Estate in the Baltimore Metropolitan Area

4311 Old Milford Mill Rd, Pikesville, MD 21208



Mitch Gold / Alex Simone
Gold and Company, LLC
5601 Newbury St.
Baltimore, MD 21209

410.578.1300
www.goldcommercial.net

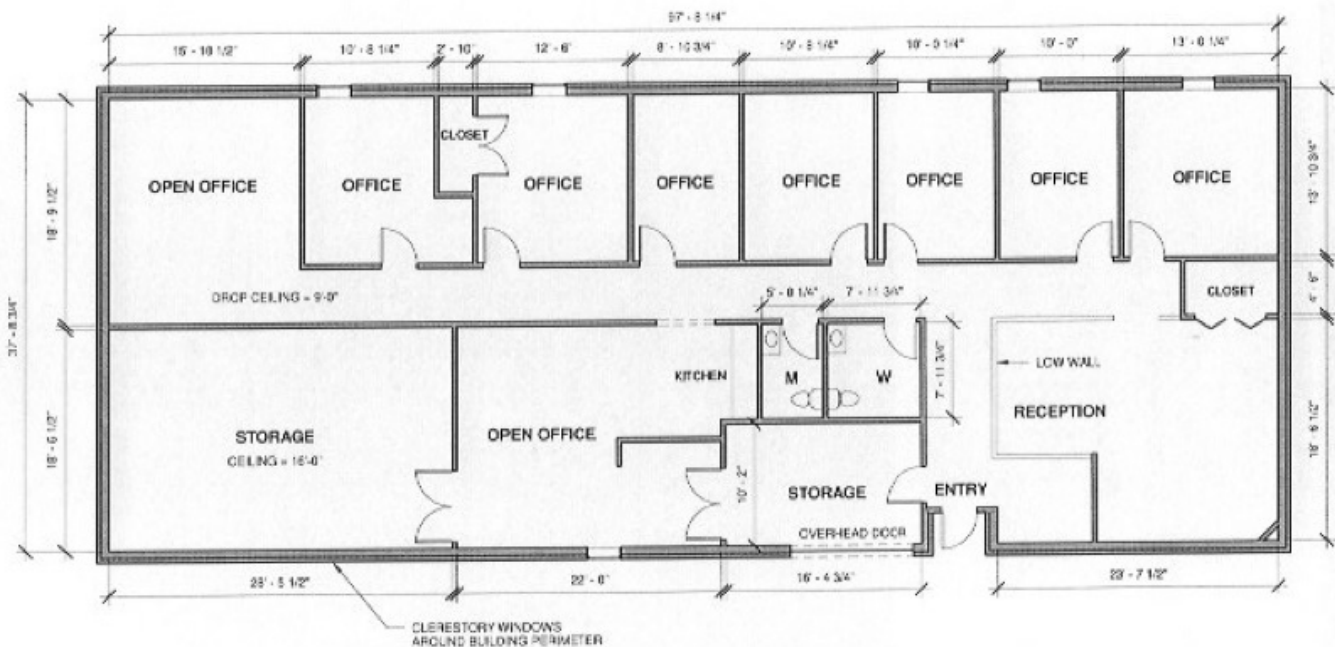


Gold and Company

Commercial Real Estate in the Baltimore Metropolitan Area

4311 Old Milford Mill Rd, Pikesville, MD 21208

Floor Plans



FLOOR AREA = 3,666 SQUARE FEET

Drop ceilings and walls can be removed to increase warehouse space

Mitch Gold / Alex Simone
Gold and Company, LLC
5601 Newbury St.
Baltimore, MD 21209

410.578.1300
www.goldcommercial.net