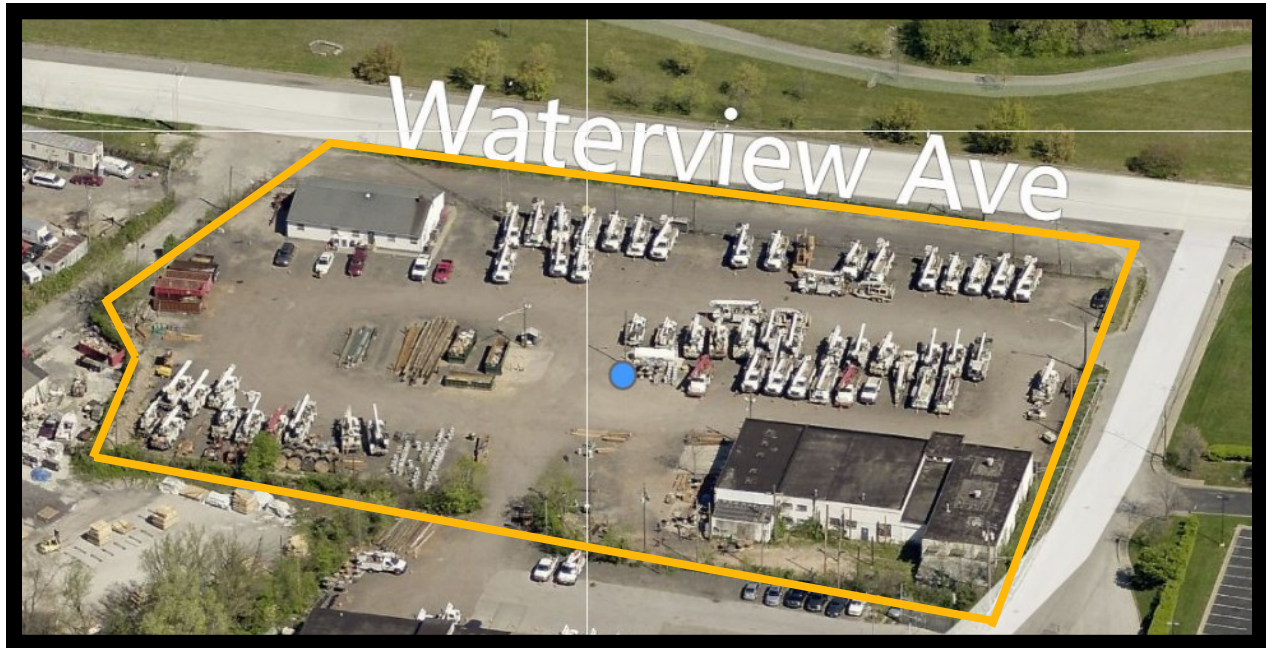




GOLD AND COMPANY, LLC



2940 Waterview Ave. Baltimore, MD 21230

Gold And Company, LLC

**5601 Newbury St.
Baltimore, MD 21209**

**Mitch Gold / Jim Chivers
Gary Glover
Office: 410.578.1300
Fax: 410.578.0200
www.goldcommercial.net**

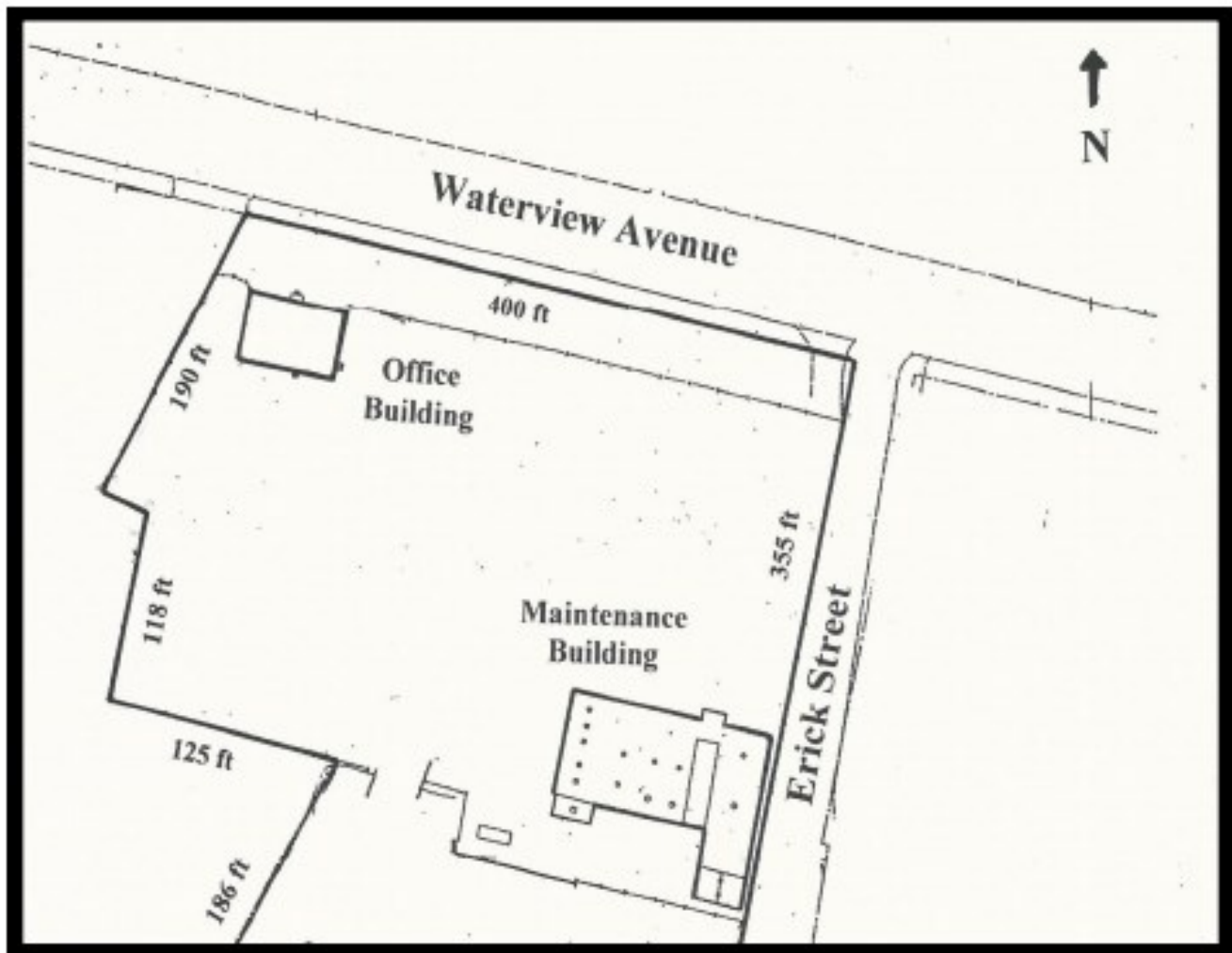
- **Vehicle Maintenance Facility**
- **Available Immediately**
- **Office Building—2,400 sf**
- **Maintenance Building—10,000 sf**
 - **5 Drive-in Doors**
 - **3 Loading Dock Doors**
- **3.1 Acres**
- **400' Frontage on Waterview Ave.**
- **Nearby Future Under Armour Development**
- **M-2 Zoning**
- **Call For More Information**

This property offering is subject to change without notice. All information is deemed reliable but not guaranteed.



GOLD AND COMPANY, LLC

2940 Waterview Ave. Baltimore, MD 21230



Mitch Gold / Jim Chivers / Gary Glover
Gold And Company, LLC
5601 Newbury St.
Baltimore, MD 21209

410.578.1300 (Office)
410.578.0200 (Fax)
www.goldcommercial.net



Gold And Company

Commercial Real Estate in the Baltimore Metropolitan Area

2940 Waterview Ave. Baltimore, MD 21230



Mitch Gold / Jim Chivers / Gary Glover
Gold And Company, LLC
5601 Newbury St.
Baltimore, MD 21209

410.578.1300 (Office)
410.578.0200 (Fax)
www.goldcommercial.net



GOLD AND COMPANY, LLC



**Waterview
Ave. Site**

Jim Chivers / Mitch Gold / Gary Glover Gold And Company, LLC 5601 Newbury St. Baltimore, MD 21209	410.578.1300 (Office) 410.578.0200 (Fax) www.goldcommercial.net
--	--