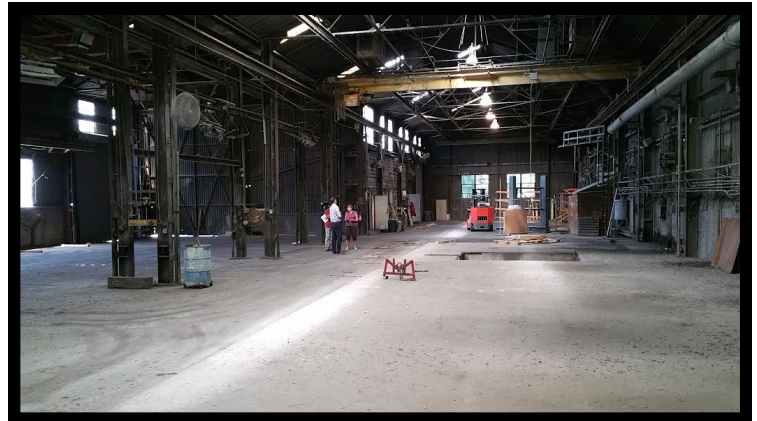
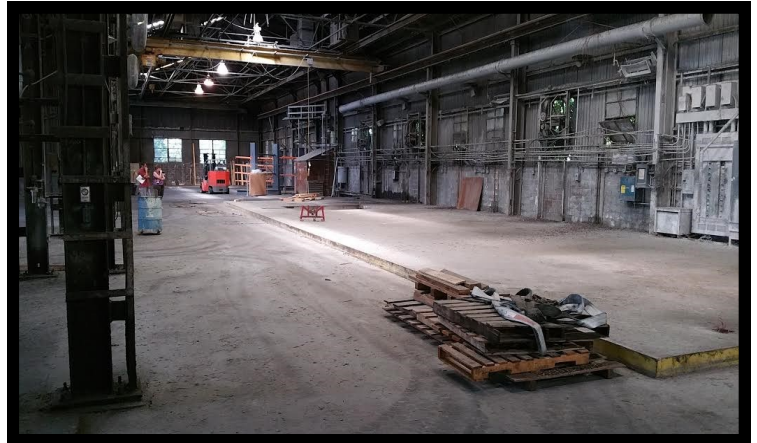




GOLD AND COMPANY, LLC



2701 Manokin St. Baltimore, MD 21230

Gold And Company, LLC

5601 Newbury St.
Baltimore, MD 21209

Jim Chivers / Mitch Gold
Gary Glover

Office: 410.578.1300

Fax: 410.578.0200

www.goldcommercial.net

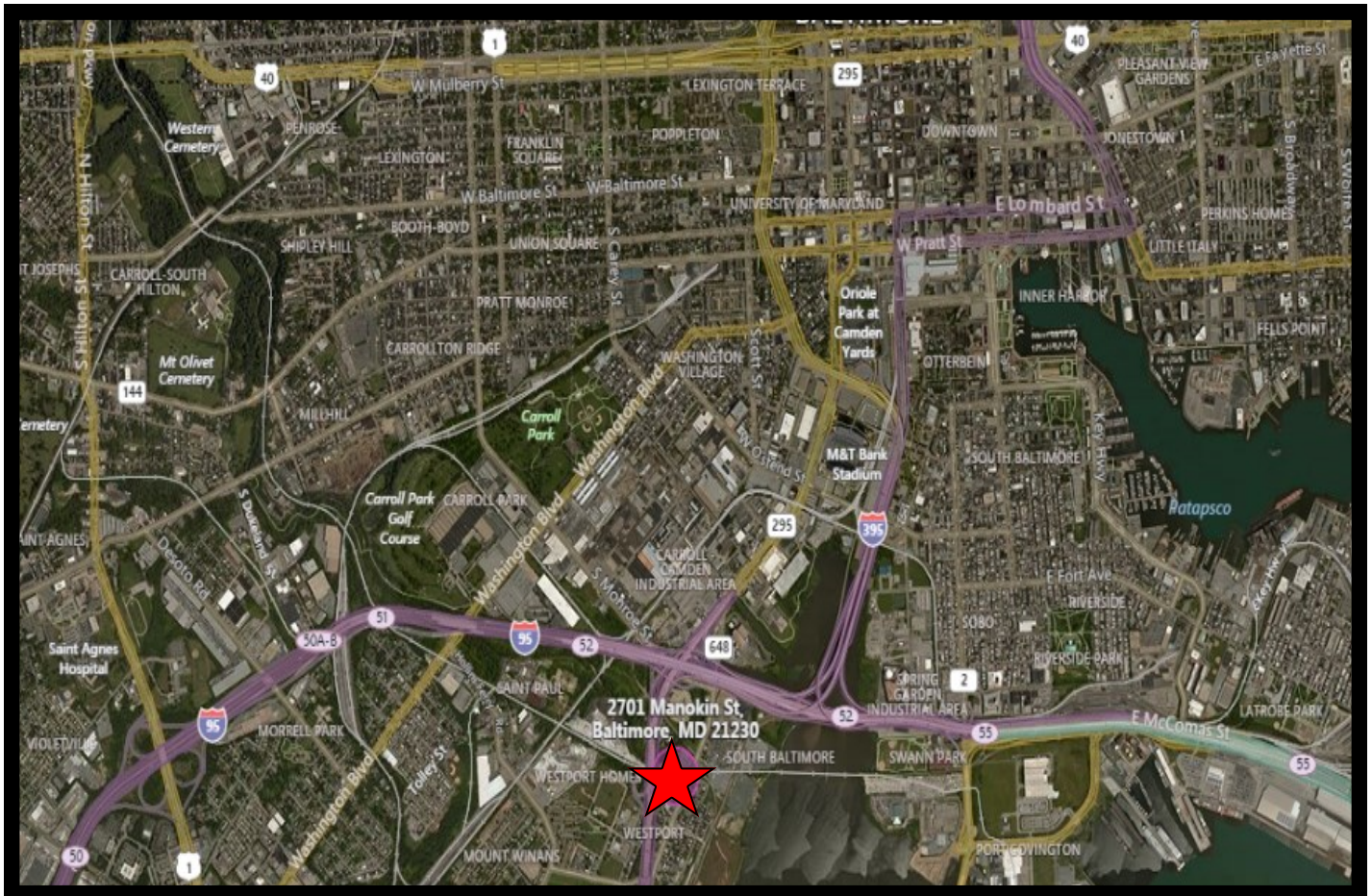
- **+/- 15,000 SF Industrial Building For Sale**
- **600 SF Office**
- **Oversized Drive-In Loading**
- **24+ Ceiling Height**
- **M-3 Zoning (Heavy Industrial)**
- **2 Bays w/ Crane Rail**
- **5-ton Crane in Operation**
- **Two Main Panels—1200 Amps and 600 Amps**
- **Gas Overhead Heaters**
- **Call For More Information**

This property offering is subject to change without notice. All information is deemed reliable but not guaranteed.



GOLD AND COMPANY, LLC

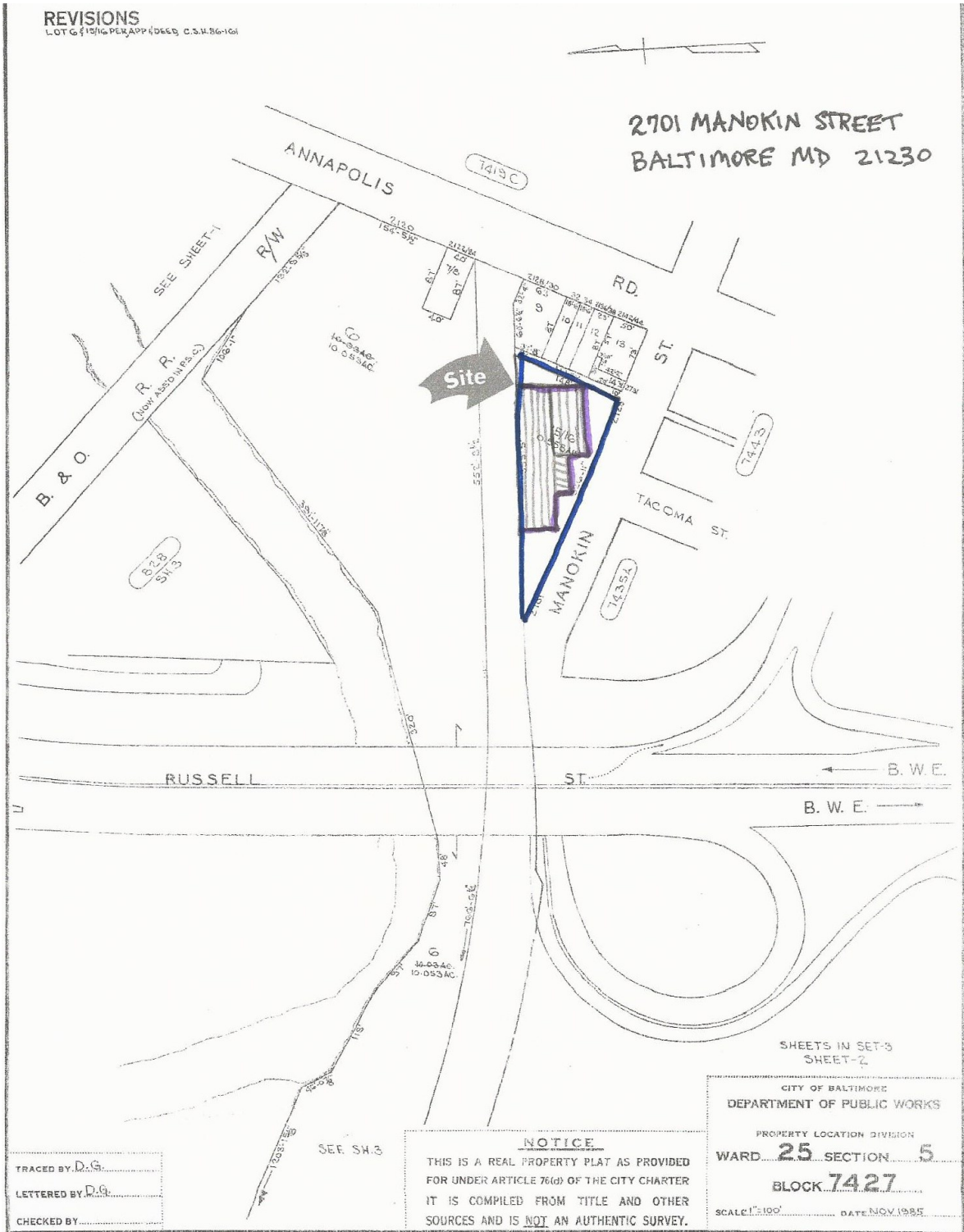
2701 Manokin St. Baltimore, MD 21230



Jim Chivers / Mitch Gold / Gary Glover
Gold And Company, LLC
5601 Newbury St.
Baltimore, MD 21209

410.578.1300 (Office)
410.578.0200 (Fax)
www.goldcommercial.net

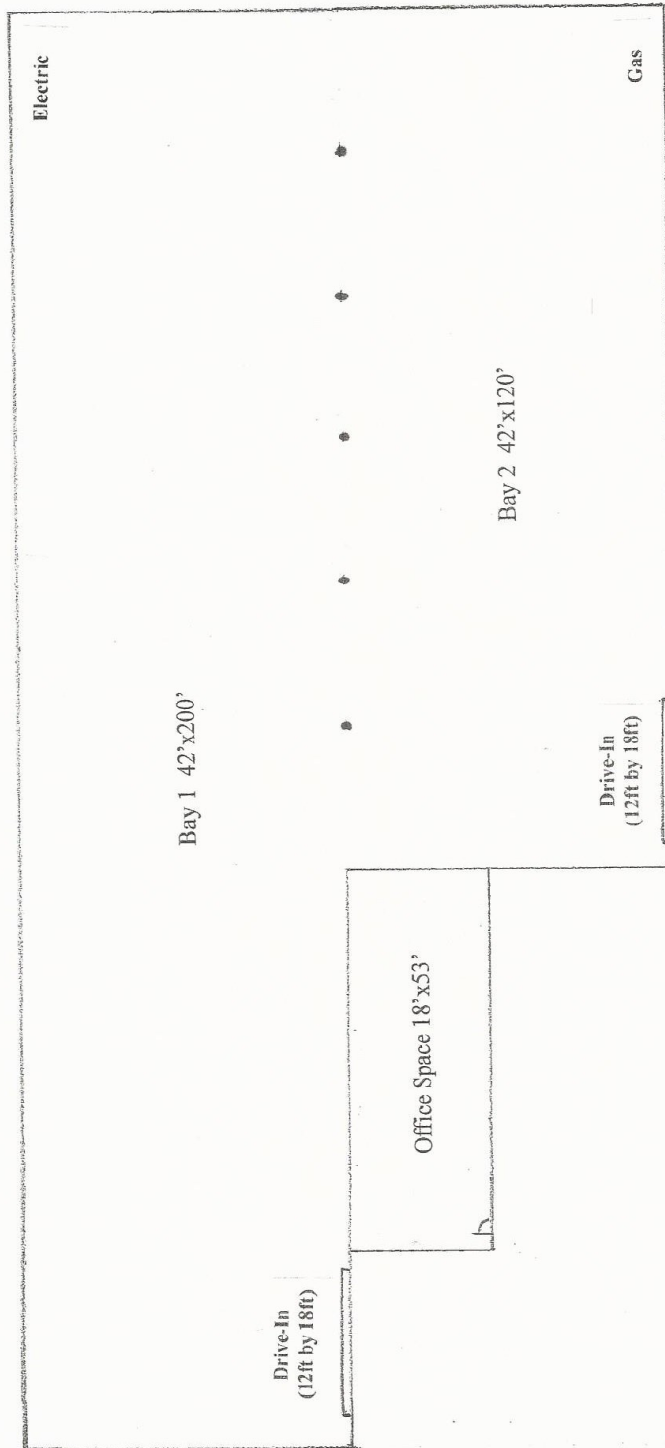
2701 Manokin St. Baltimore, MD 21230



Jim Chivers / Mitch Gold / Gary Glover
Gold And Company, LLC
5601 Newbury St.
Baltimore, MD 21209

410.578.1300 (Office)
410.578.0200 (Fax)
www.goldcommercial.net

2701 Manokin St. Baltimore, MD 21230



2701 Manokin Street
Baltimore, MD 21230



GOLD AND COMPANY, LLC
5601 Newbury Street, Baltimore, MD 21209
410-578-1300
www.goldcommercial.net

Jim Chivers / Mitch Gold / Gary Glover
Gold And Company, LLC
5601 Newbury St.
Baltimore, MD 21209

410.578.1300 (Office)
410.578.0200 (Fax)
www.goldcommercial.net