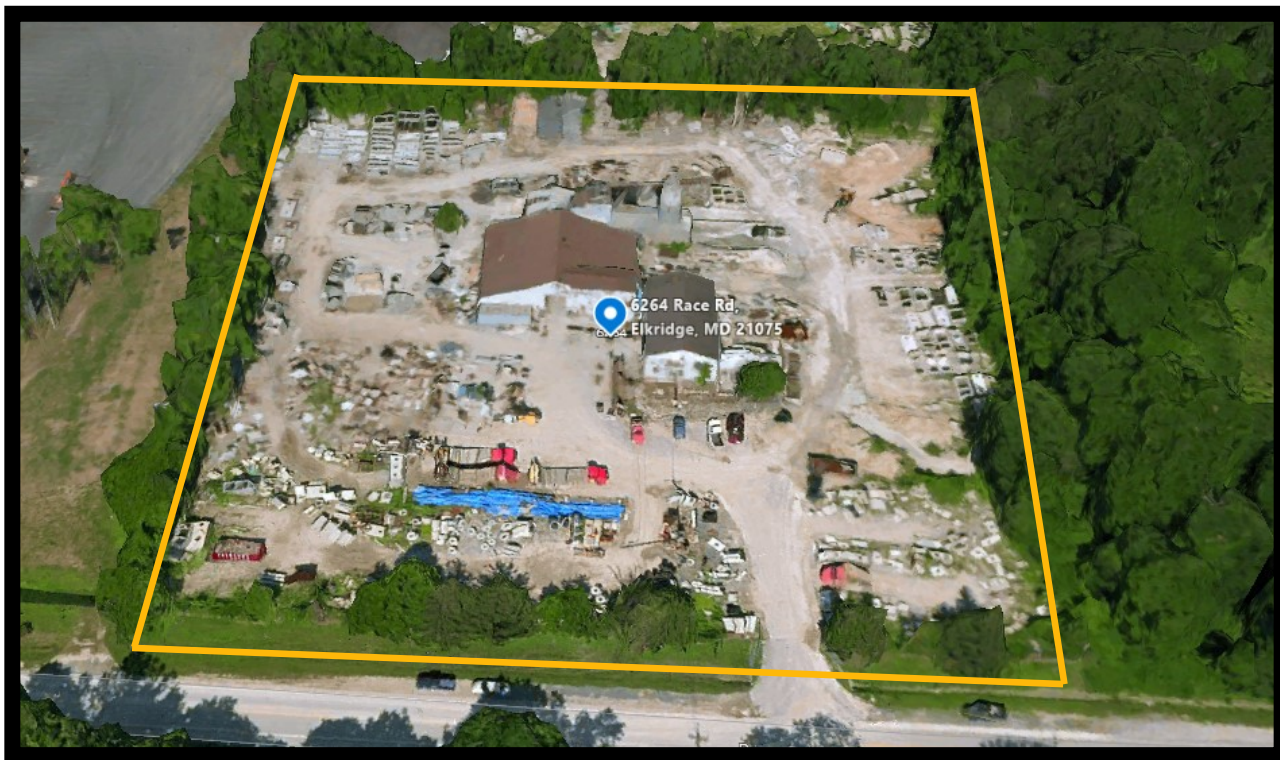




GOLD AND COMPANY, LLC



6264 Race Rd. Elkridge, MD 21075

Gold And Company, LLC

5601 Newbury St.
Baltimore, MD 21209

Jim Chivers
443.928.7522 Cell
Jim@goldcommercial.net

Mitch Gold
410.456.2492 Cell
Mitch@goldcommercial.net

www.goldcommercial.net

- **Industrial Property FOR SALE**
- **+/- 8,500 sf Building**
- **Drive-In Access**
- **4.0 Acres**
- **M-2 Zoning— (Industrial—Howard County)**
- **Functional Property Layout**
- **Easy Access to I-95 / Rt. 100 / 295**
- **Ideal for Contractors Storage, Concrete Companies, Recycling, Aggregate Yards, Trucking, Etc.**
- **Call For More Information**

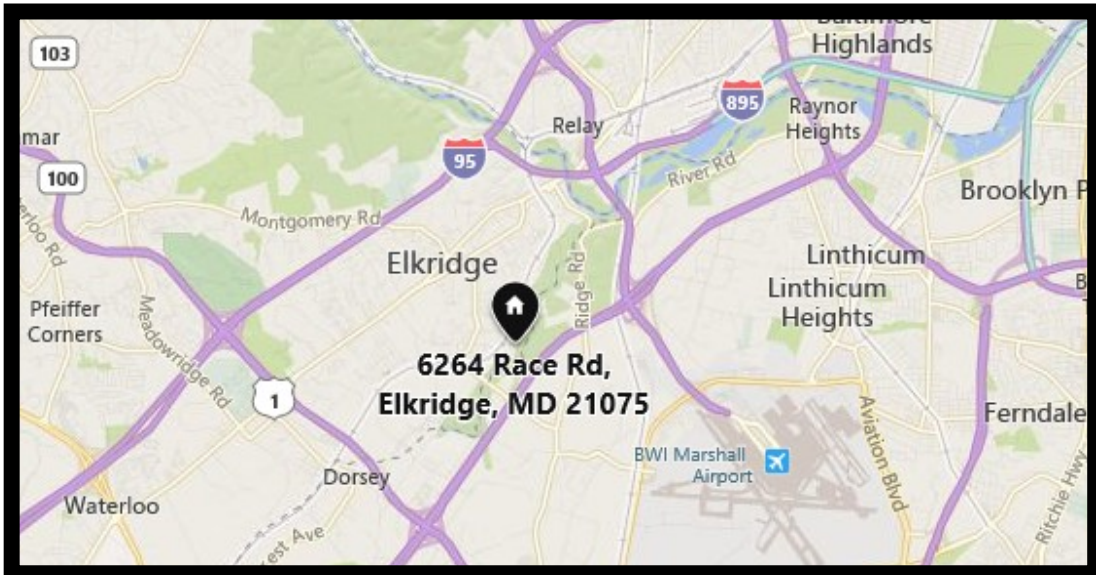


Gold And Company

Commercial Real Estate in the Baltimore Metropolitan Area

6264 Race Rd. Elkridge, MD 21075

Maps



Jim Chivers / Mitch Gold
Gold And Company, LLC
5601 Newbury St.
Baltimore, MD 21209

410.578.1300 (Office)
www.goldcommercial.net



Gold And Company

Commercial Real Estate in the Baltimore Metropolitan Area

6264 Race Rd. Elkridge, MD 21075

Pictures



**Jim Chivers / Mitch Gold
Gold And Company, LLC
5601 Newbury St.
Baltimore, MD 21209**

410.578.1300 (Office)

www.goldcommercial.net