



GOLD AND COMPANY, LLC

WWW.GOLDCOMMERCIAL.NET

Commercial Real Estate in the Baltimore Metropolitan Area



6 E. Lafayette Ave. Baltimore, MD 21202

Gold And Company, LLC

**5601 Newbury St.
Baltimore, MD 21209**

For More Information:

**Jim Chivers
443.928.7522 cell
jim@goldcommercial.net**

www.goldcommercial.net

- **Flex / Event Hall / Assembly Building FOR SALE**
- **+/- 7,500 sf Building**
- **Complete Renovation in 2017**
- **Sprinklered**
- **TOD-4 Zoning - Near Renovated Penn Station**
- **In the Heart of the Arts and Entertainment District**
- **Enterprise, HUB, and Opportunity Zone**
- **Short Term Tenant in Place**
- **Call For More Information**

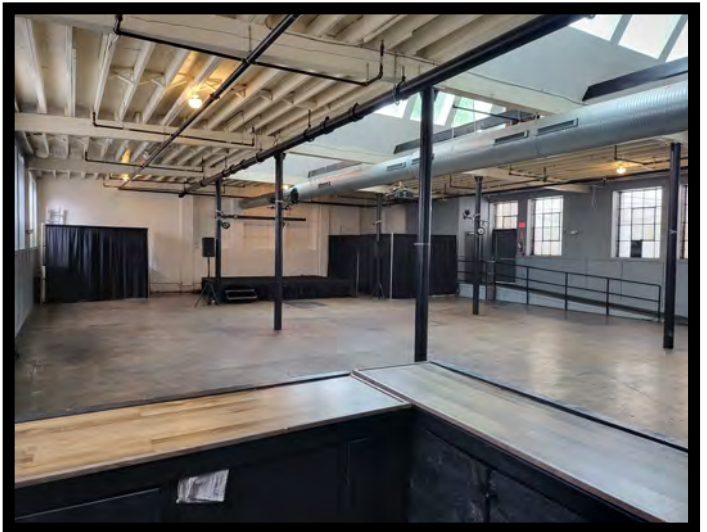
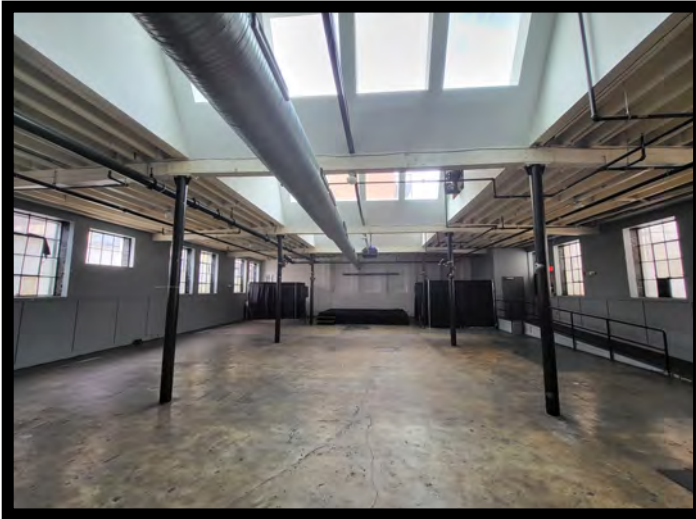
This property offering is subject to change without notice. All information is deemed reliable but not guaranteed.



Gold And Company

Commercial Real Estate in the Baltimore Metropolitan Area

Interior Pictures



Jim Chivers
Gold And Company, LLC
5601 Newbury St.
Baltimore, MD 21209

410.578.1300 (Office)

www.goldcommercial.net

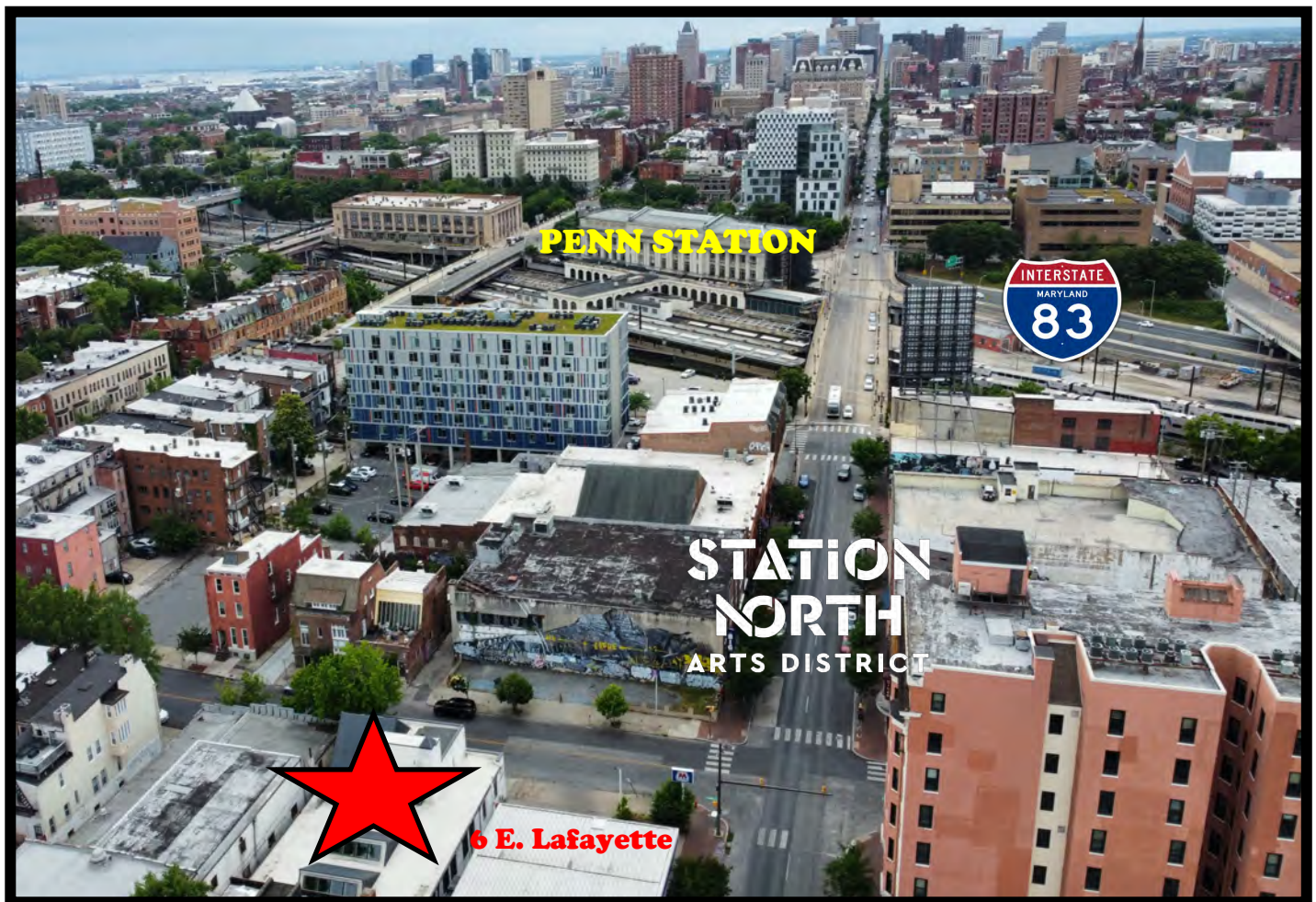


Gold And Company

Commercial Real Estate in the Baltimore Metropolitan Area

6 E. Lafayette Ave. Baltimore, MD 21202

Aerial



**Jim Chivers
Gold And Company, LLC
5601 Newbury St.
Baltimore, MD 21209**

410.578.1300 (Office)

www.goldcommercial.net