



Est. 1999

GOLD AND COMPANY, LLC



4000 Bank St / 314 S. Haven St. Baltimore, MD 21214

Gold And Company, LLC

5601 Newbury St.
Baltimore, MD 21209

Jim Chivers
jim@goldcommercial.net

Mitch Gold
mitch@goldcommercial.net

Gary Glover
gary@goldcommercial.net

Alex Simone
alex@goldcommercial.net

Office: 410.578.1300
www.goldcommercial.net

- **Industrial Land / Development Site Available FOR SALE**
- **0.87 Acre / 38,019 sf Land Area**
- **Located in Greektown Neighborhood of E. Baltimore City**
- **One Block Off of Eastern Ave.—Main Baltimore Thoroughfare**
- **I-1 Zoning—Light Industrial**
- **Near New Development**
- **All Public Utilities are Available**
- **Topography: All Level and at Street Grade**
- **Frontage: 125' on S. Haven / Grundy—215' on Bank St.**

This property offering is subject to change without notice. All information is deemed reliable but not guaranteed.

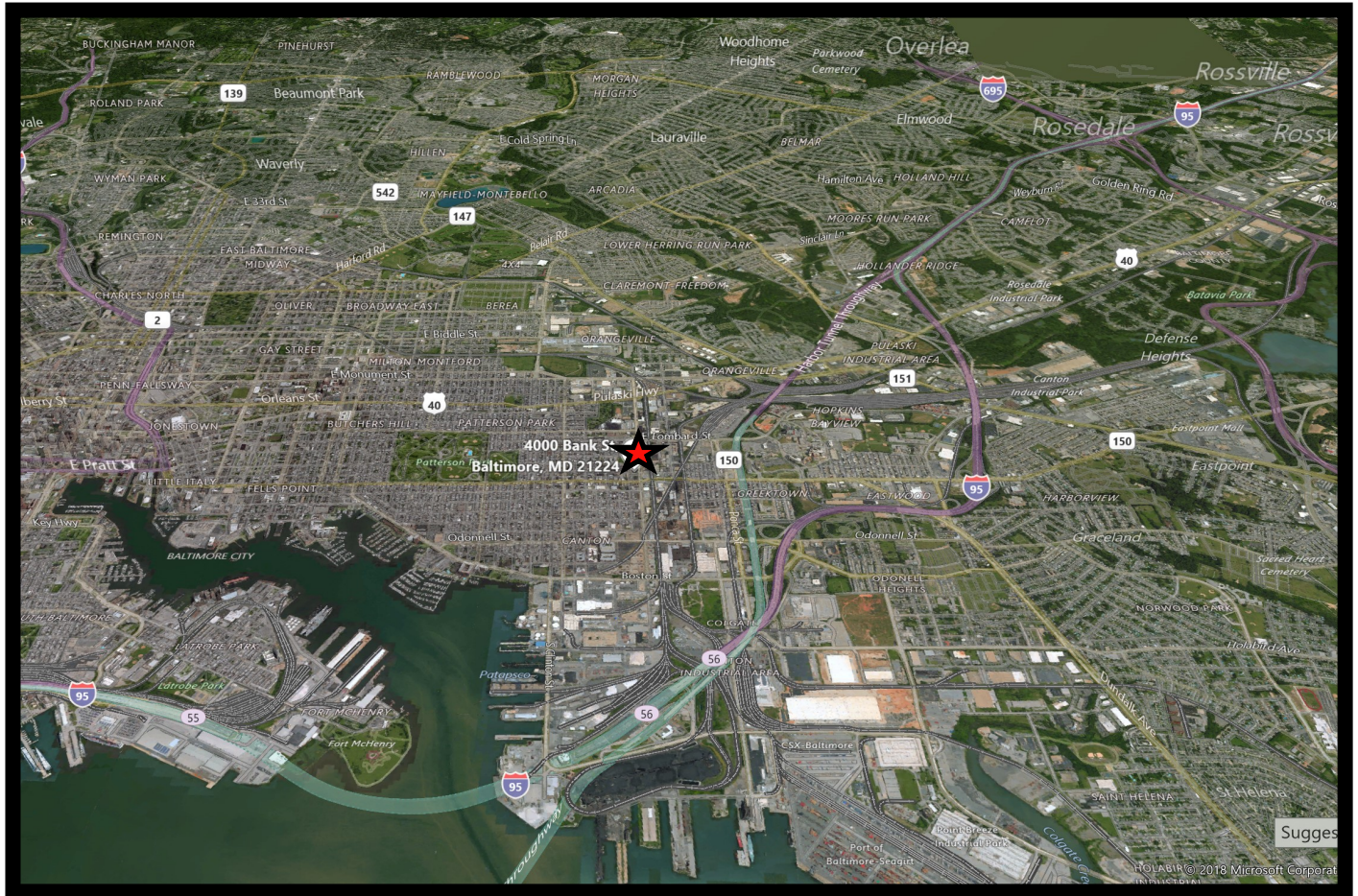


Gold And Company

Commercial Real Estate in the Baltimore Metropolitan Area

4000 Bank St / 314 S. Haven St. Baltimore, MD 21214

Map



Gold And Company, LLC
5601 Newbury St.
Baltimore, MD 21209

410.578.1300
www.goldcommercial.net

This property offering is subject to change without notice. All information is deemed reliable but not guaranteed.

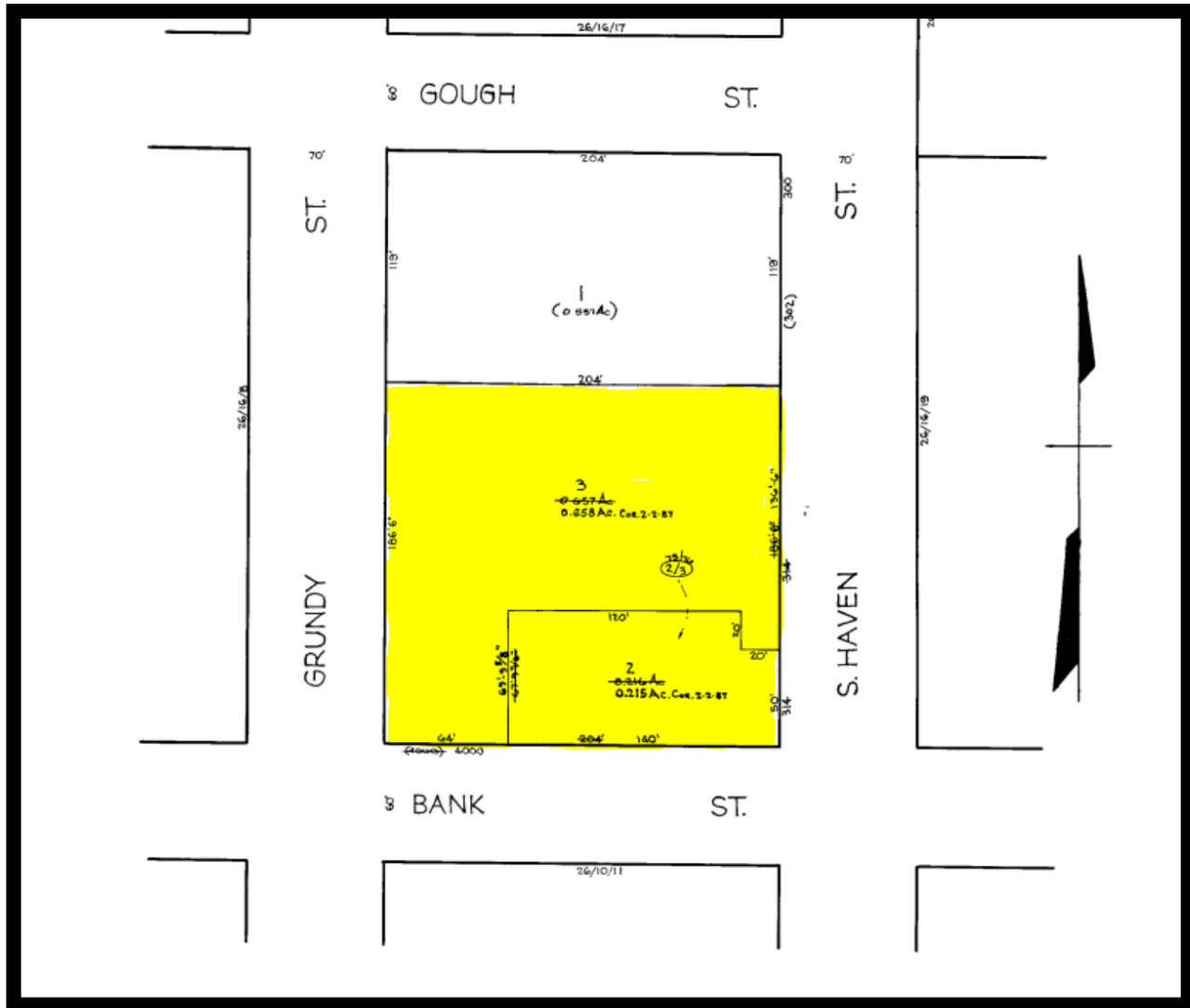


Gold And Company

Commercial Real Estate in the Baltimore Metropolitan Area

4000 Bank St / 314 S. Haven St. Baltimore, MD 21214

Tax Map



Gold And Company, LLC
5601 Newbury St.
Baltimore, MD 21209

410.578.1300
www.goldcommercial.net