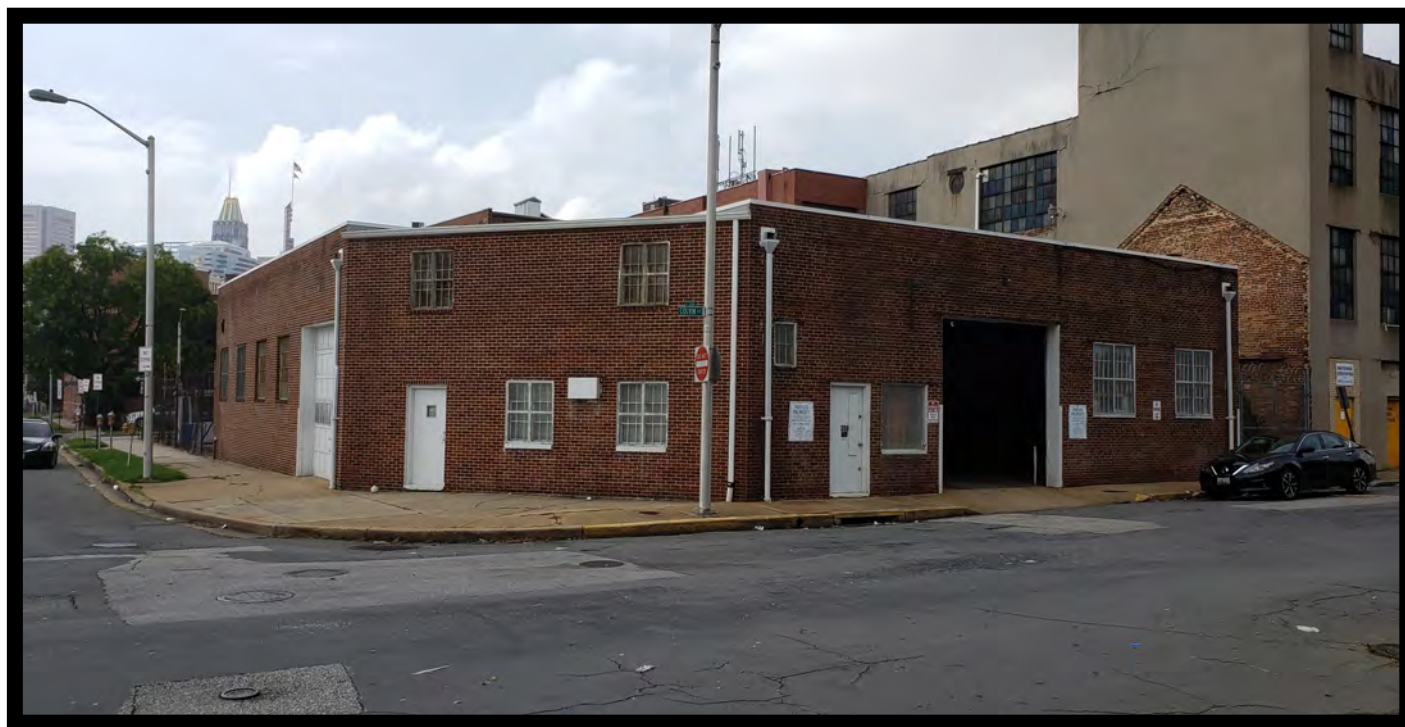




GOLD AND COMPANY, LLC



306 N. Colvin St. Baltimore, MD 21202

Gold And Company, LLC

**5601 Newbury St.
Baltimore, MD 21209**

**Jim Chivers
Cell: 443.928.7522
jim@goldcommercial.net
Office: 410.578.1300
www.goldcommercial.net**

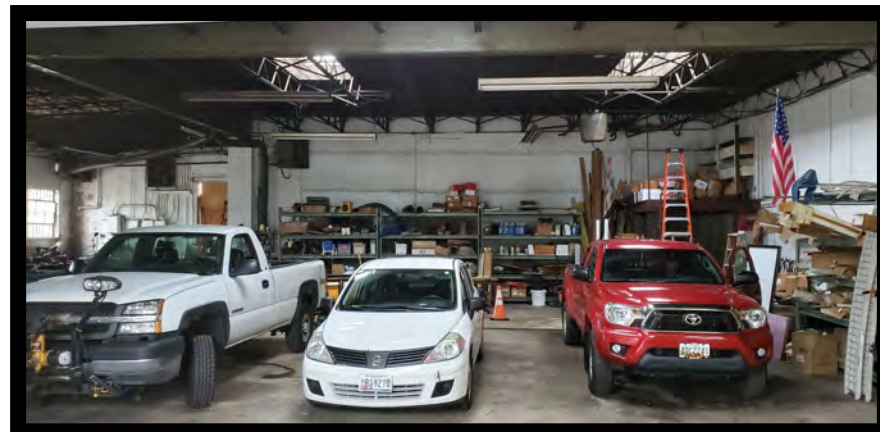
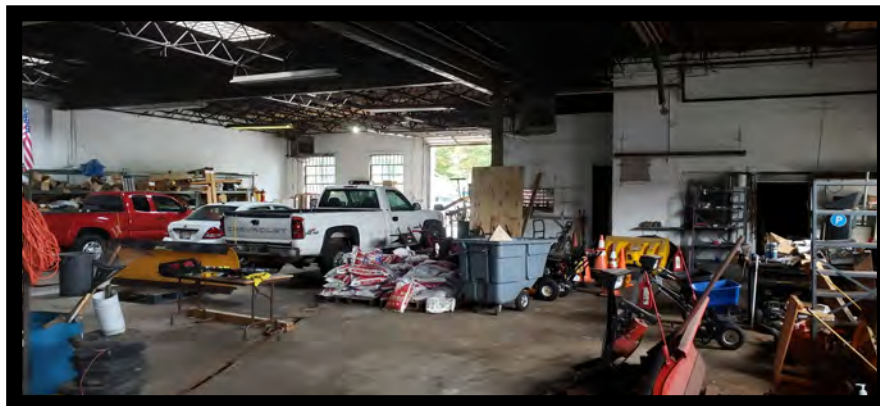
- **Downtown Baltimore City**
- **Industrial Property FOR SALE**
- **5,000 sf**
- **2 Drive-In Doors**
- **I-MU Zoning (Industrial—Mixed Use)**
- **14+ Ceiling Height**
- **Fenced Lot**
- **New Roof Installed**
- **Near Old Town Mall Future Development**
- **Call For More Information**



Gold And Company

Commercial Real Estate in the Baltimore Metropolitan Area

INTERIOR PICTURES



Jim Chivers
Gold And Company, LLC
5601 Newbury St.
Baltimore, MD 21209

410.578.1300 (Office)
410.578.0200 (Fax)
www.goldcommercial.net

This property offering is subject to change without notice. All information is deemed reliable but not guaranteed.



Gold And Company

Commercial Real Estate in the Baltimore Metropolitan Area

306 N. Colvin St. Baltimore, MD 21202

Map and Aerial



Jim Chivers
Gold And Company, LLC
5601 Newbury St.
Baltimore, MD 21209

410.578.1300 (Office)
410.578.0200 (Fax)
www.goldcommercial.net