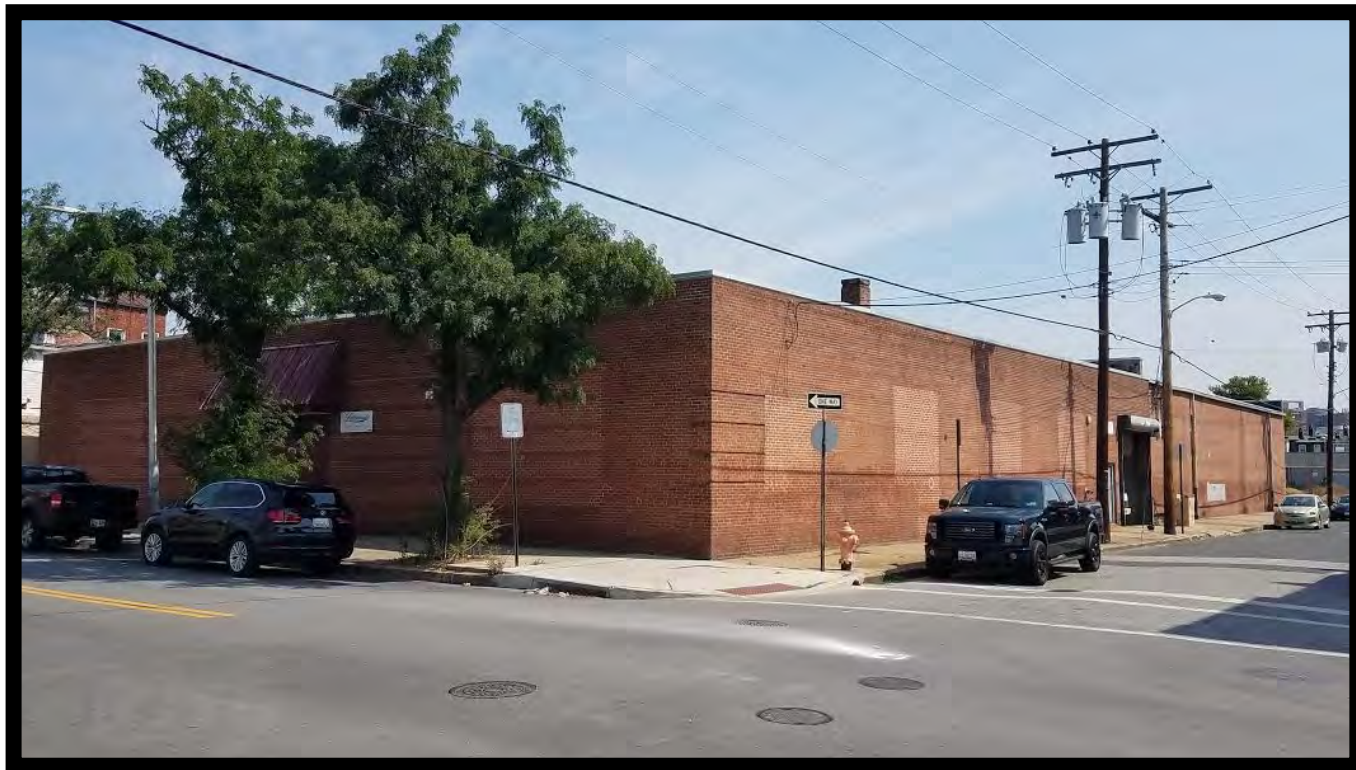




GOLD AND COMPANY, LLC



1205 S. Carey St. Baltimore, MD 21230

Gold And Company, LLC

**5601 Newbury St.
Baltimore, MD 21209**

**Jim Chivers / Mitch Gold
Gary Glover
Office: 410.578.1300
www.goldcommercial.net**

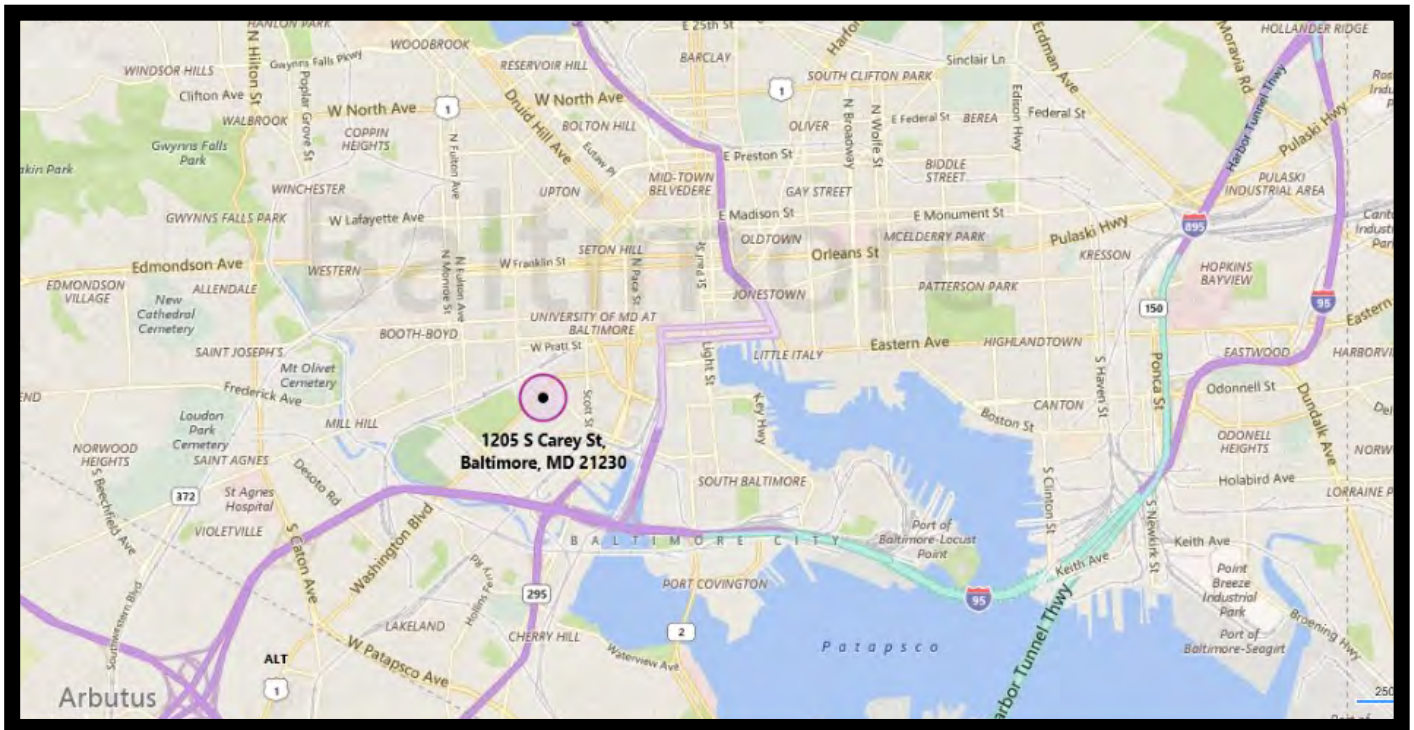
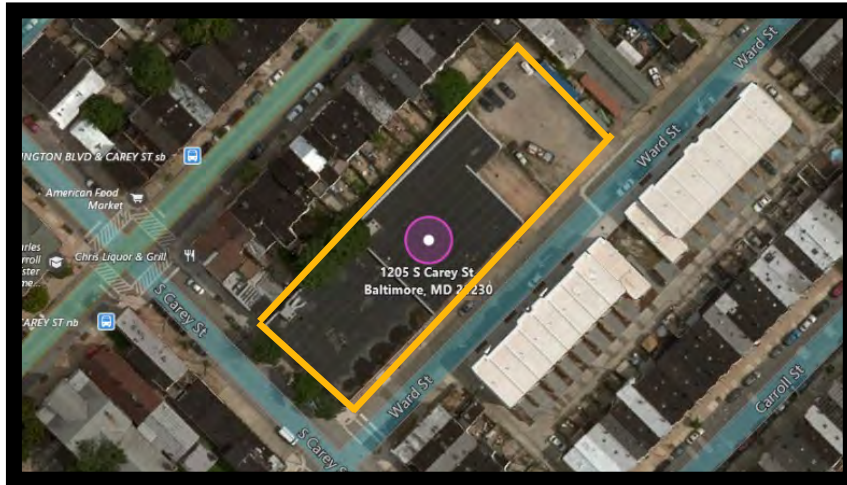
- **20,000 sf Industrial Building FOR SALE**
- **Dock and Drive-In Loading**
- **Located in Baltimore City's Pigtown Neighborhood**
- **Wet Sprinkler System**
- **Gas Served**
- **Approximately 500 Amps, 3 Phase Power**
- **Ceiling—+/- 16'**
- **Close Access to I-95**
- **Call For More Information**



Gold And Company

Commercial Real Estate in the Baltimore Metropolitan Area

1205 S. Carey St. Baltimore, MD 21230



Jim Chivers / Mitch Gold / Gary Glover
Gold And Company, LLC
5601 Newbury St.
Baltimore, MD 21209

410.578.1300 (Office)
410.578.0200 (Fax)
www.goldcommercial.net