



GOLD AND COMPANY, LLC



4012 Belle Grove Rd. Baltimore, MD 21225

Gold And Company, LLC

**5601 Newbury St.
Baltimore, MD 21209**

**Jim Chivers / Mitch Gold
Gary Glover
Office: 410.578.1300
Fax: 410.578.0200
www.goldcommercial.net**

- **+/- 8,000 Total sf FOR SALE**
- **2 Story Flex Building**
- **Anne Arundel County**
- **Close Proximity to Baltimore City, All Main Highways, New Development**
- **W-2 Zoning**
- **Excellent Frontage / Visibility**
- **Off Street Parking Available**
- **Call For More Information**

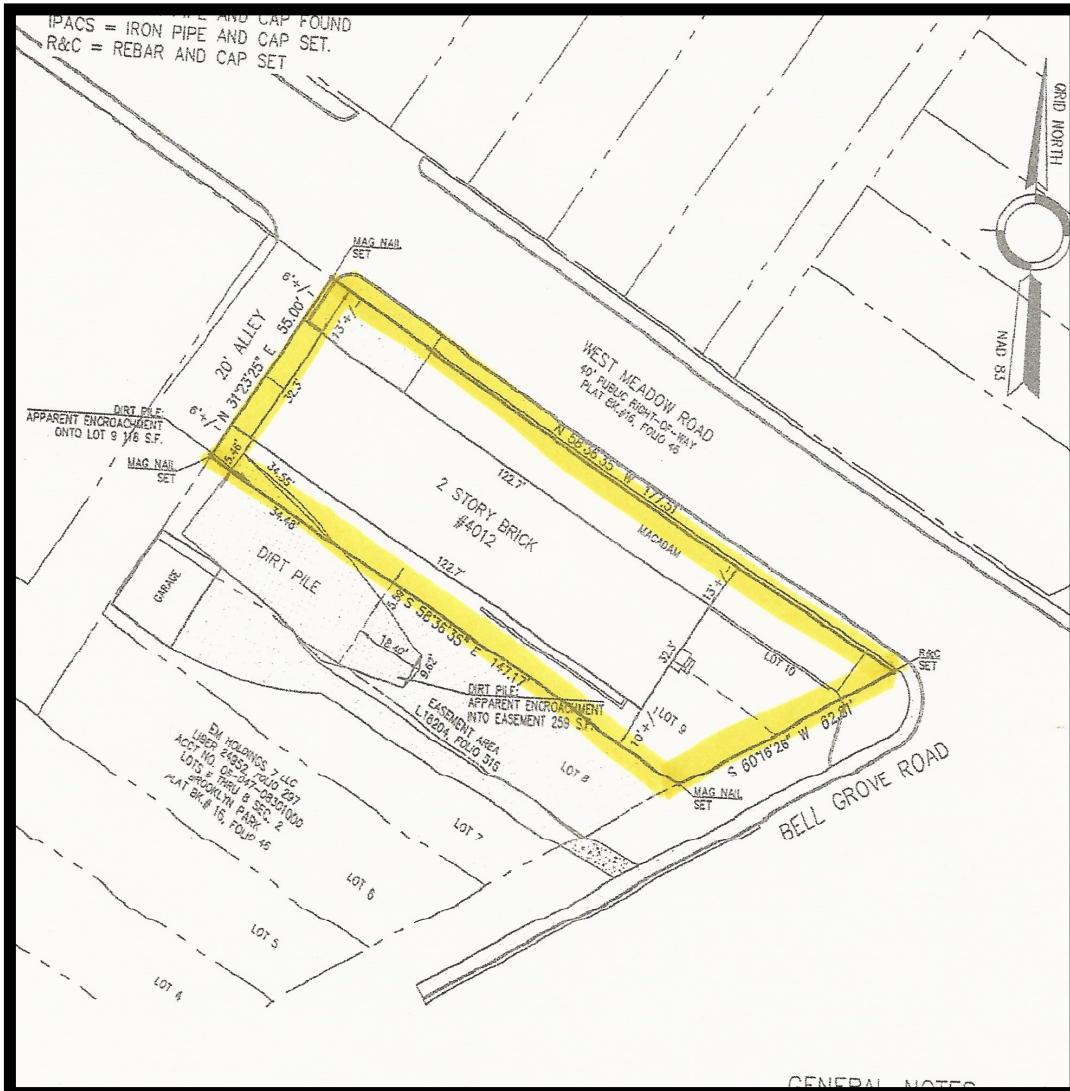


Gold And Company

Commercial Real Estate in the Baltimore Metropolitan Area

4012 Belle Grove Rd. Baltimore, MD 21225

SURVEY



Jim Chivers / Mitch Gold / Gary Glover
Gold And Company, LLC
5601 Newbury St.
Baltimore, MD 21209

410.578.1300 (Office)
410.578.0200 (Fax)
www.goldcommercial.net

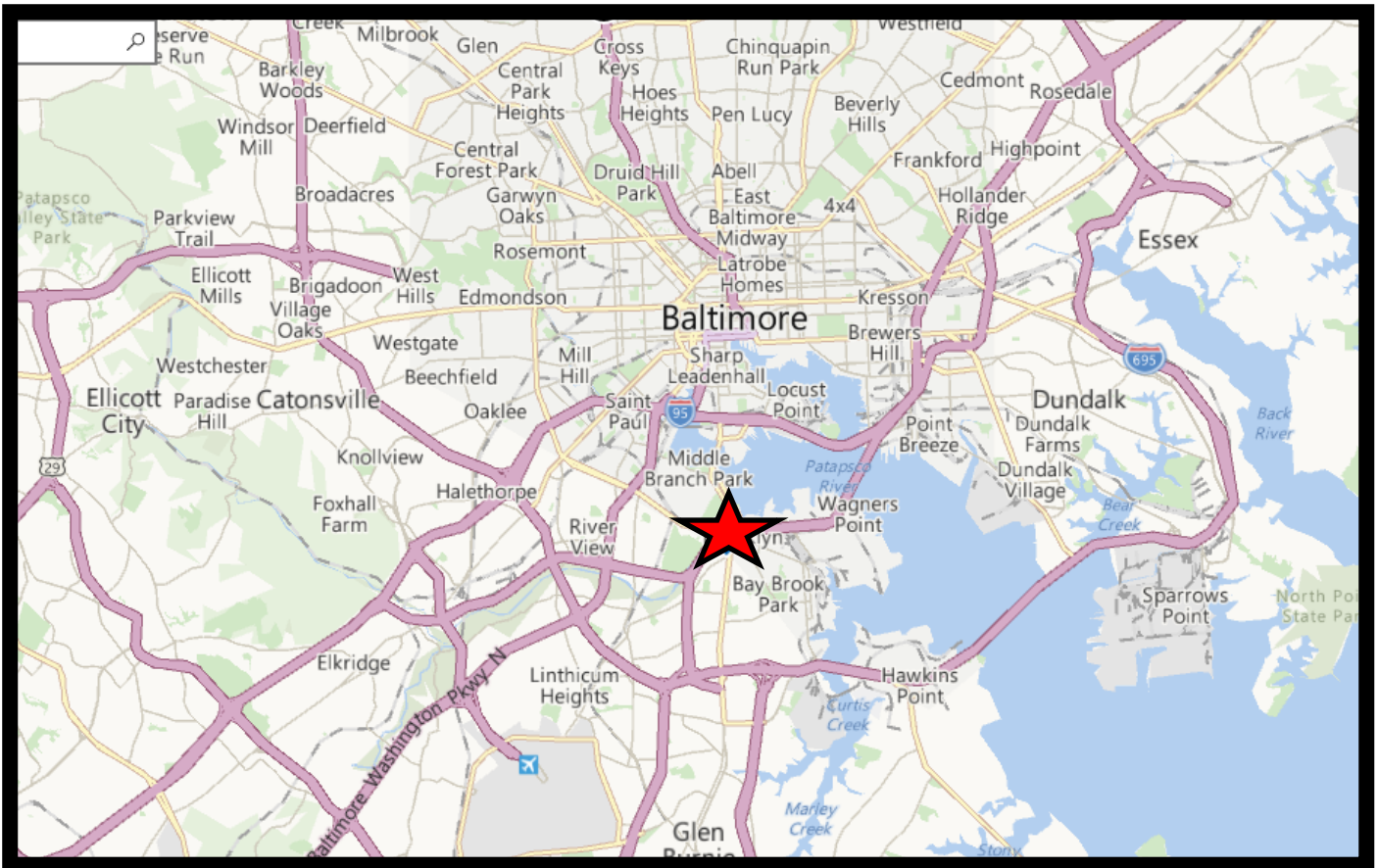


Gold And Company

Commercial Real Estate in the Baltimore Metropolitan Area

4012 Belle Grove Rd. Baltimore, MD 21225

MAP



Jim Chivers / Mitch Gold / Gary Glover
Gold And Company, LLC
5601 Newbury St.
Baltimore, MD 21209

410.578.1300 (Office)
410.578.0200 (Fax)
www.goldcommercial.net