



# **GOLD AND COMPANY, LLC**



**900 E. Monument St. Baltimore, MD 21202**

## **Gold And Company, LLC**

**5601 Newbury St.  
Baltimore, MD 21209**

**Jim Chivers / Mitch Gold  
Gary Glover**

**Office: 410.578.1300**

**Fax: 410.578.0200**

**[www.goldcommercial.net](http://www.goldcommercial.net)**

- **+/- 38,000 sf Total Building**
- **.60 Acre Total Land Area**
- **2 Story Industrial Building**
- **Dock and Interior Dock Platform Loading**
- **Building is Sprinklered**
- **Existing Shaft for Elevator**
- **Window Line on 2nd Floor Overlooking Downtown Baltimore**
- **Industrial Mixed Use Zoning**
- **Call For More Information**

This property offering is subject to change without notice. All information is deemed reliable but not guaranteed.

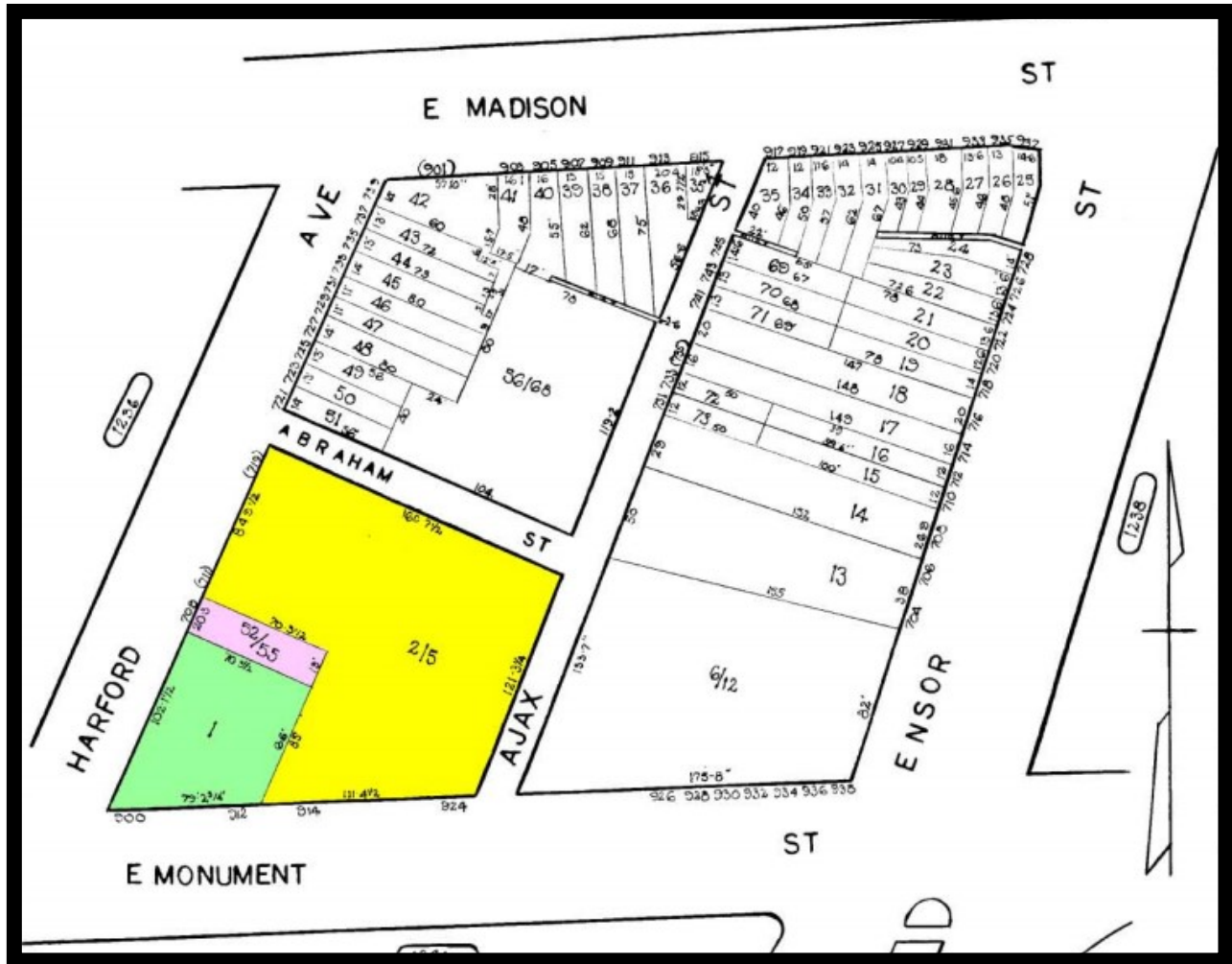


# Gold And Company

Commercial Real Estate in the Baltimore Metropolitan Area

900 E. Monument St. Baltimore, MD 21202

## BLOCK MAP



**Jim Chivers / Mitch Gold / Gary Glover**  
**Gold And Company, LLC**  
**5601 Newbury St.**  
**Baltimore, MD 21209**

**410.578.1300 (Office)**  
**410.578.0200 (Fax)**  
**[www.goldcommercial.net](http://www.goldcommercial.net)**

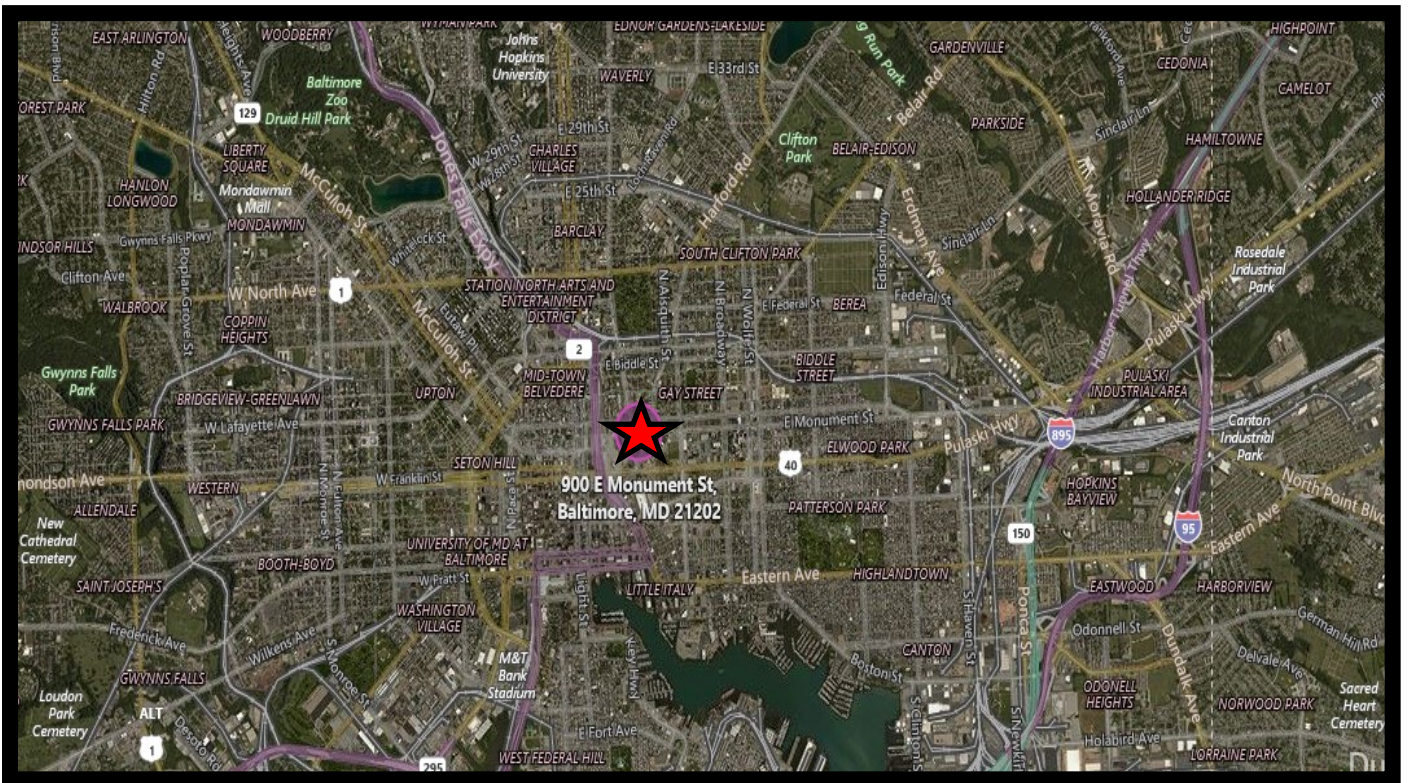


# Gold And Company

*Commercial Real Estate in the Baltimore Metropolitan Area*

**900 E. Monument St. Baltimore, MD 21202**

## MAP / AERIAL VIEW



**Jim Chivers / Mitch Gold / Gary Glover**  
**Gold And Company, LLC**  
**5601 Newbury St.**  
**Baltimore, MD 21209**

**410.578.1300 (Office)**  
**410.578.0200 (Fax)**  
**[www.goldcommercial.net](http://www.goldcommercial.net)**

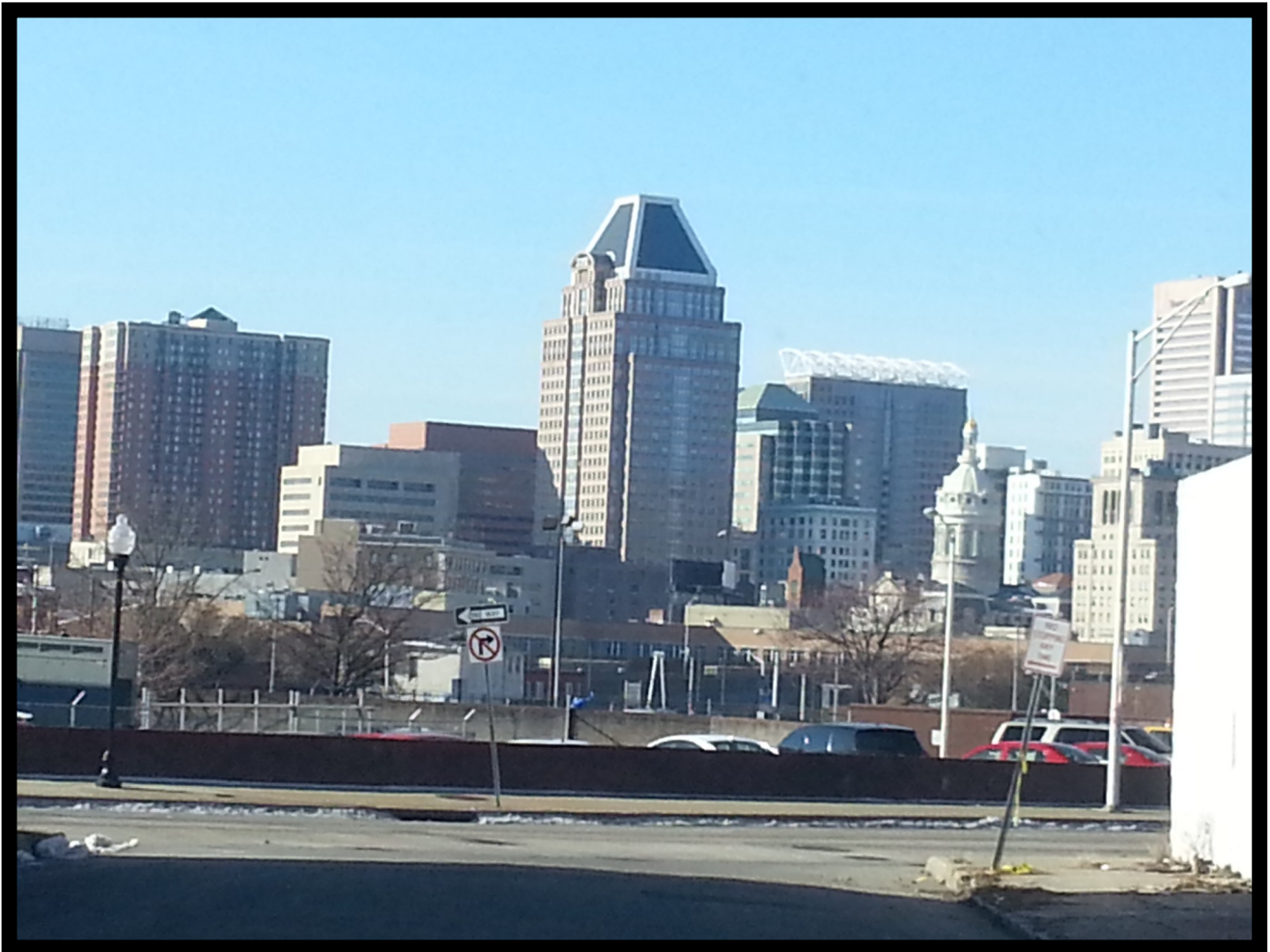


# **Gold And Company**

*Commercial Real Estate in the Baltimore Metropolitan Area*

**900 E. Monument St. Baltimore, MD 21202**

## **VIEW OF DOWNTOWN BALTIMORE FROM THE BUILDING**



**Jim Chivers / Mitch Gold / Gary Glover**  
**Gold And Company, LLC**  
**5601 Newbury St.**  
**Baltimore, MD 21209**

**410.578.1300 (Office)**  
**410.578.0200 (Fax)**  
**[www.goldcommercial.net](http://www.goldcommercial.net)**