



# **GOLD AND COMPANY, LLC**



**7721 Baltimore-Annapolis Blvd. Glen Burnie, MD 21060**

## **Gold And Company, LLC**

**5601 Newbury St.  
Baltimore, MD 21209**

**Jim Chivers / Gary Glover  
Office: 410.578.1300  
Fax: 410.578.0200  
www.goldcommercial.net**

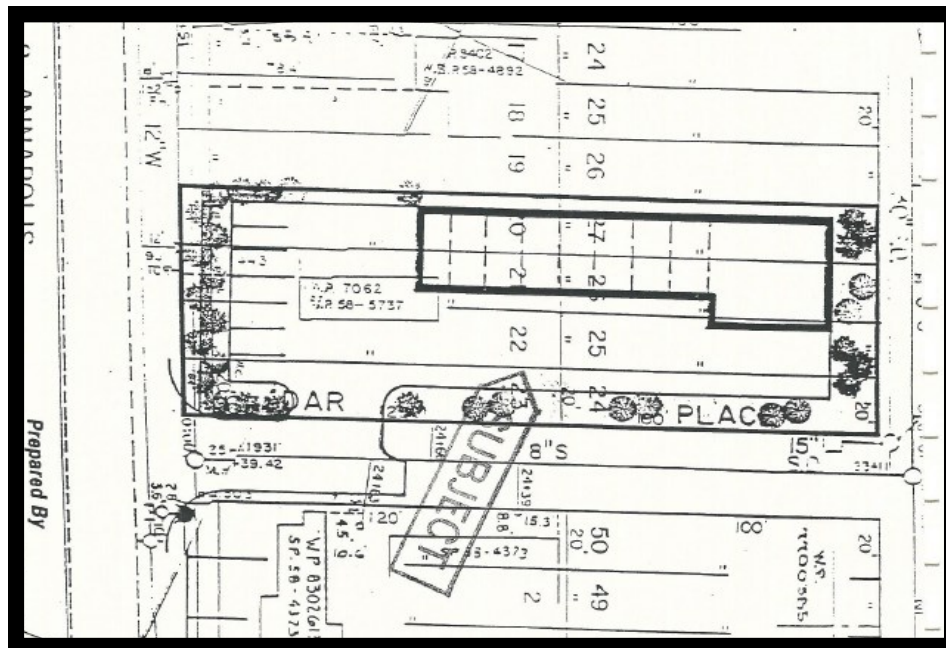
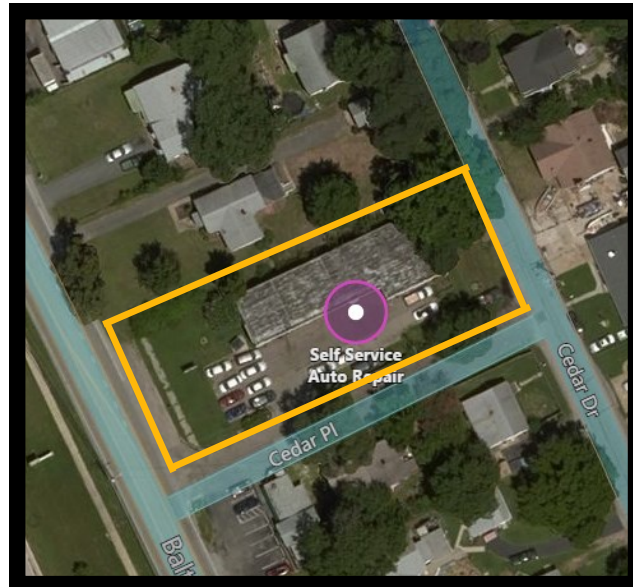
- **Auto Repair Building Available FOR SALE**
- **Long Term NNN Lease in Place**
- **+/- 4,300 sf Drive-In Repair w/ Offices and Parts Room**
- **Lot Size—+/- 17,000 sf**
- **C-4 Zoning**
- **Built in 1992**
- **Close Proximity to I-97 / 695 / Ritchie Hwy**
- **Call to Discuss Lease Terms / Financials**



# Gold And Company

*Commercial Real Estate in the Baltimore Metropolitan Area*

**7721 Baltimore-Annapolis Blvd. Glen Burnie, MD 21060**



**Jim Chivers / Gary Glover**  
**Gold And Company, LLC**  
**5601 Newbury St.**  
**Baltimore, MD 21209**

**410.578.1300 (Office)**  
**410.578.0200 (Fax)**  
**[www.goldcommercial.net](http://www.goldcommercial.net)**

This property offering is subject to change without notice. All information is deemed reliable but not guaranteed.

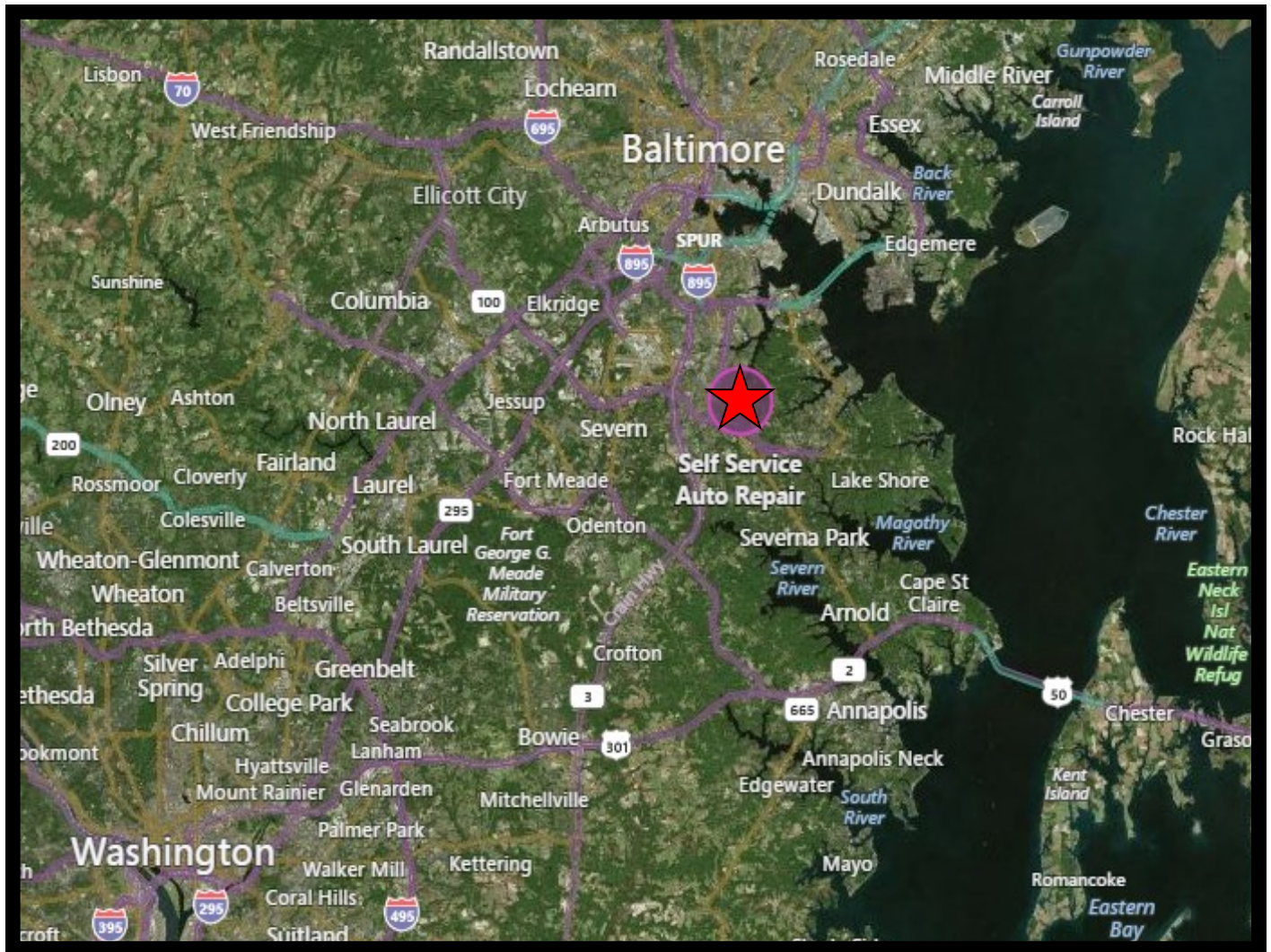




# Gold And Company

*Commercial Real Estate in the Baltimore Metropolitan Area*

**7721 Baltimore-Annapolis Blvd. Glen Burnie, MD 21060**



**Jim Chivers / Gary Glover**  
**Gold And Company, LLC**  
**5601 Newbury St.**  
**Baltimore, MD 21209**

**410.578.1300 (Office)**  
**410.578.0200 (Fax)**  
**[www.goldcommercial.net](http://www.goldcommercial.net)**