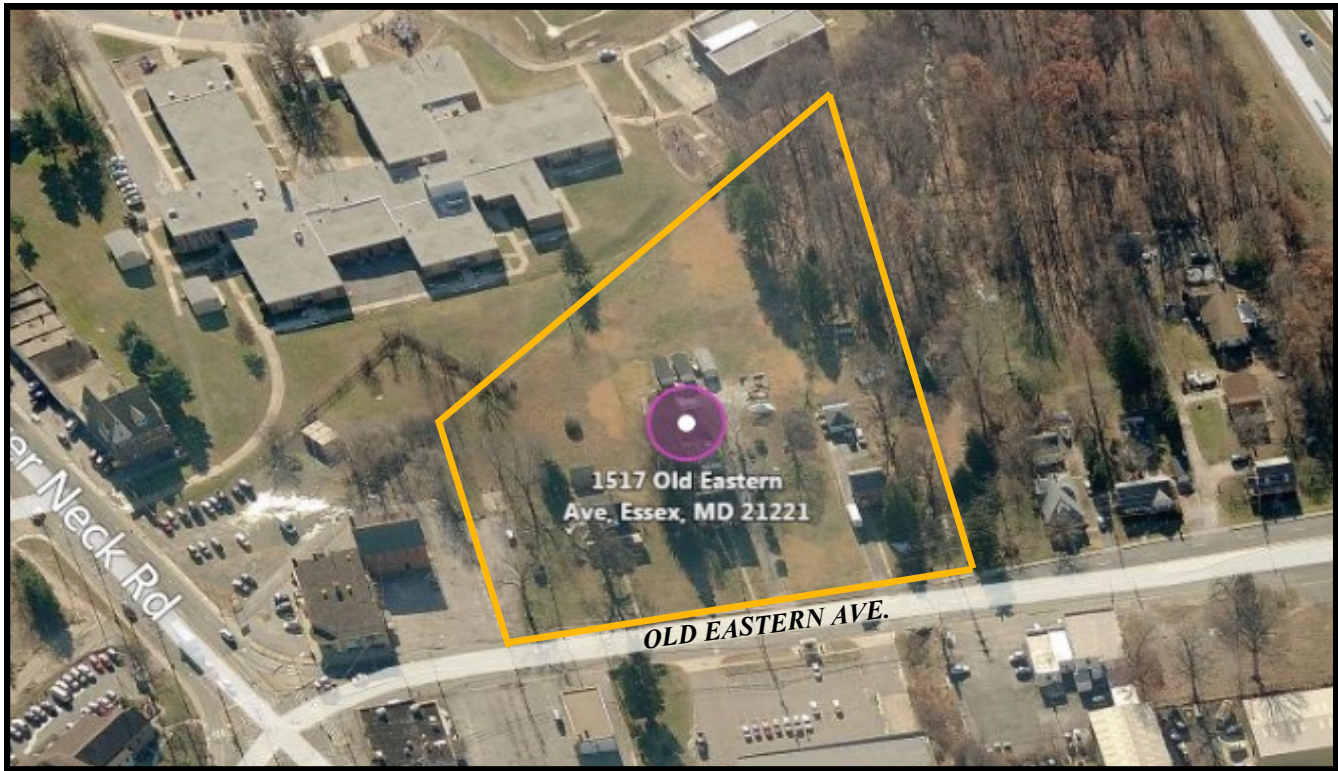




GOLD AND COMPANY, LLC



1513-1517-1519 Old Eastern Ave. Baltimore, MD 21221

Gold And Company, LLC

**5601 Newbury St.
Baltimore, MD 21209**

**Jim Chivers / Mitch Gold
Gary Glover
Office: 410.578.1300
Fax: 410.578.0200
www.goldcommercial.net**

- **+/- 4.49 Acres Assemblage FOR SALE (4 Parcels)**
- **Potential for Office / Medical / Residential Development**
- **East Baltimore County Submarket**
- **+/- 400' Frontage on Old Eastern Ave.**
- **Between Rt. 702 and Stemmers Run / Back River Neck**
- **Planned Unit Development (PUD) Eligible**
- **Near Local Shopping Centers, Schools, and Residential Community**
- **CALL FOR MORE INFORMATION**



Gold And Company

Commercial Real Estate in the Baltimore Metropolitan Area

1513-1517-1519 Old Eastern Ave. Baltimore, MD 21221



Jim Chivers / Mitch Gold / Gary Glover
Gold And Company, LLC
5601 Newbury St.
Baltimore, MD 21209

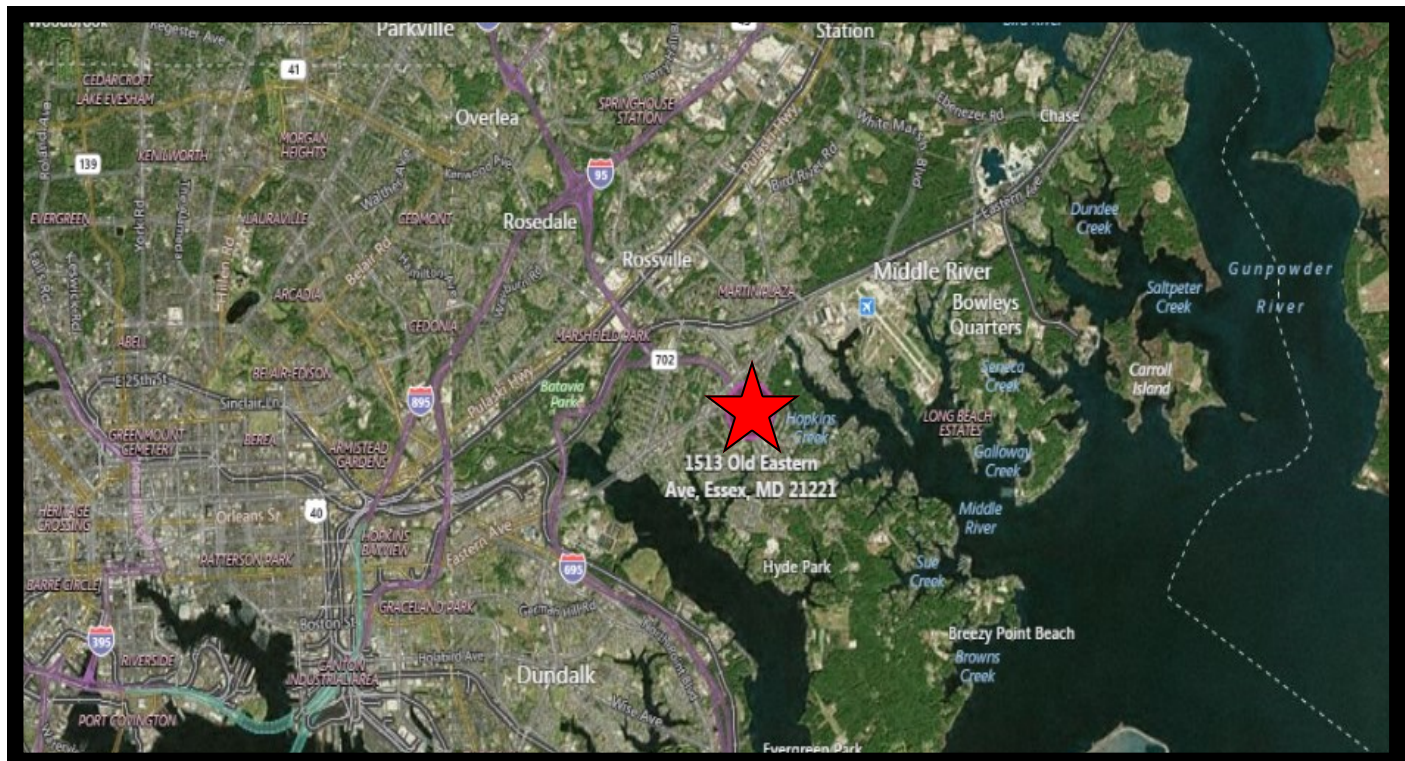
410.578.1300 (Office)
410.578.0200 (Fax)
www.goldcommercial.net



Gold And Company

Commercial Real Estate in the Baltimore Metropolitan Area

1513-1517-1519 Old Eastern Ave. Baltimore, MD 21221



Jim Chivers / Mitch Gold / Gary Glover
Gold And Company, LLC
5601 Newbury St.
Baltimore, MD 21209

410.578.1300 (Office)
410.578.0200 (Fax)
www.goldcommercial.net