



GOLD AND COMPANY, LLC



320 N. Charles St. Baltimore, MD 21201

Gold And Company, LLC

**5601 Newbury St.
Baltimore, MD 21209**

**Jim Chivers / Mitch Gold
Gary Glover
Office: 410.578.1300
Fax: 410.578.0200
www.goldcommercial.net**

- **+/- 7,000 sf Office Building FOR SALE**
- **Extensive Renovations Completed in 2008**
- **4 Stories w/ Elevator and Full Basement**
- **Move-in Condition**
- **Ideal Central Business District Location**
- **Within Walking Distance to Restaurants, Retail, Hotels**
- **11 Total Offices w/ Large Conference Room**
- **Call For More Information**

This property offering is subject to change without notice. All information is deemed reliable but not guaranteed.



Gold And Company

Commercial Real Estate in the Baltimore Metropolitan Area

320 N. Charles St. Baltimore, MD 21201



Jim Chivers / Mitch Gold / Gary Glover
Gold And Company, LLC
5601 Newbury St.
Baltimore, MD 21209

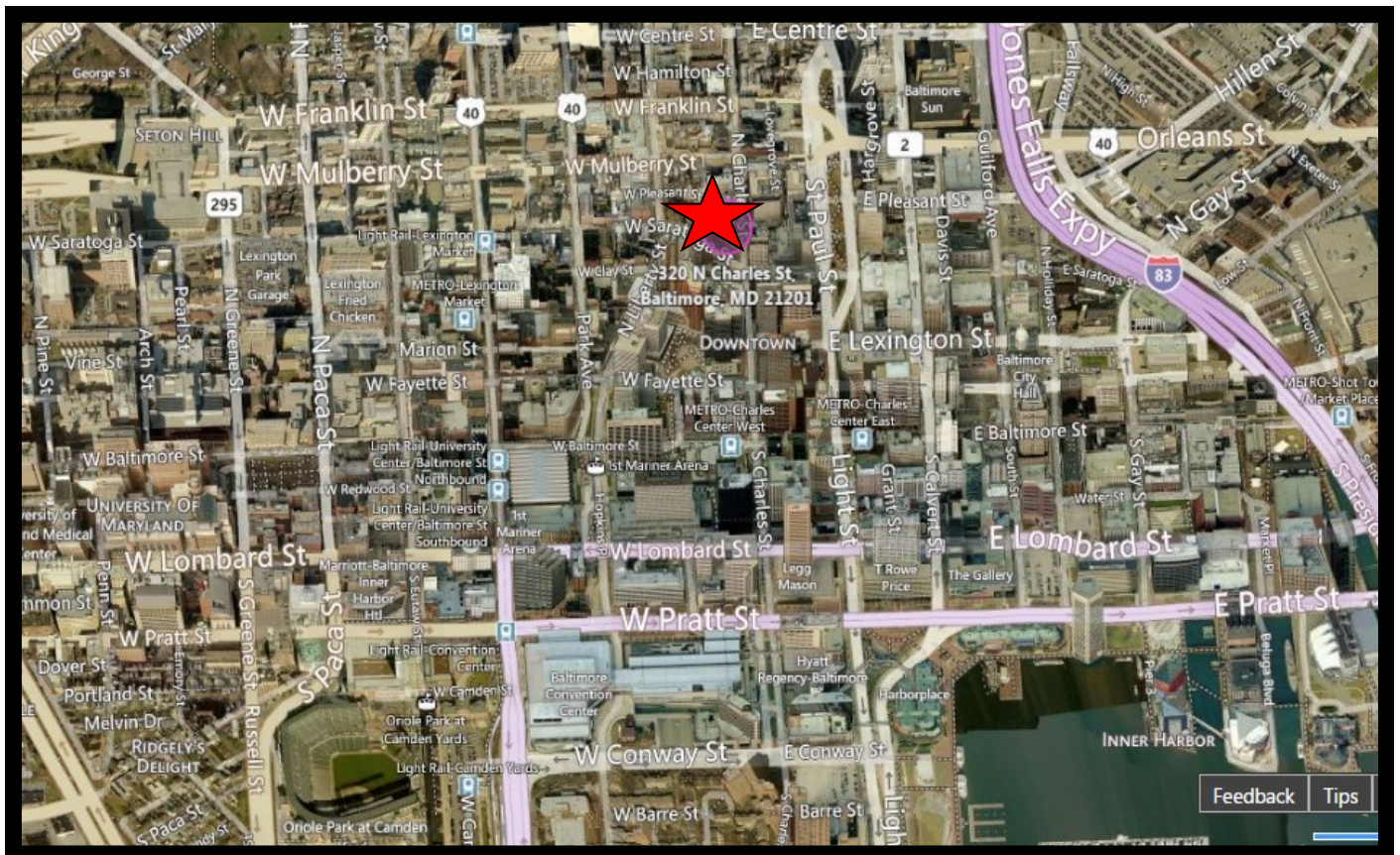
410.578.1300 (Office)
410.578.0200 (Fax)
www.goldcommercial.net



Gold And Company

Commercial Real Estate in the Baltimore Metropolitan Area

320 N. Charles St. Baltimore, MD 21201



Jim Chivers / Mitch Gold / Gary Glover
Gold And Company, LLC
5601 Newbury St.
Baltimore, MD 21209

410.578.1300 (Office)
410.578.0200 (Fax)
www.goldcommercial.net



Gold And Company

Commercial Real Estate in the Baltimore Metropolitan Area

320 N. Charles St. Baltimore, MD 21201

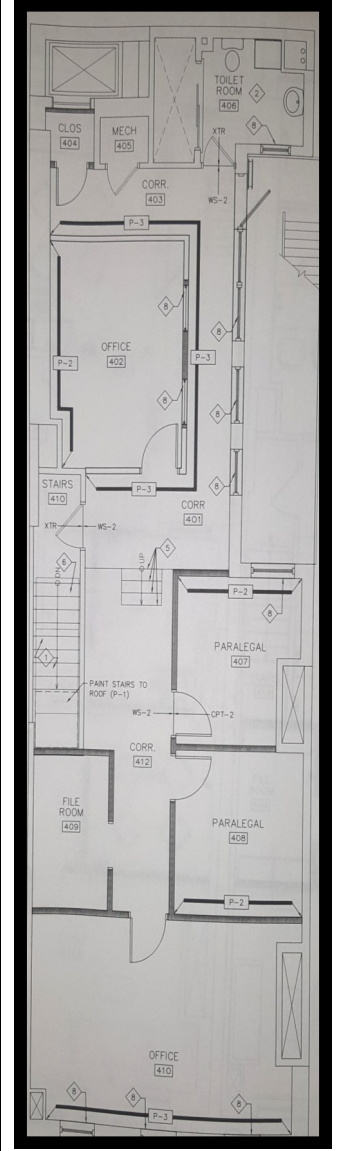
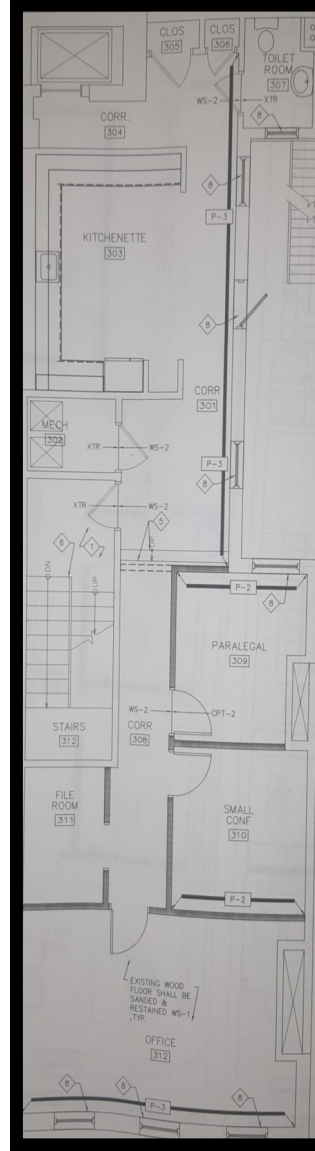
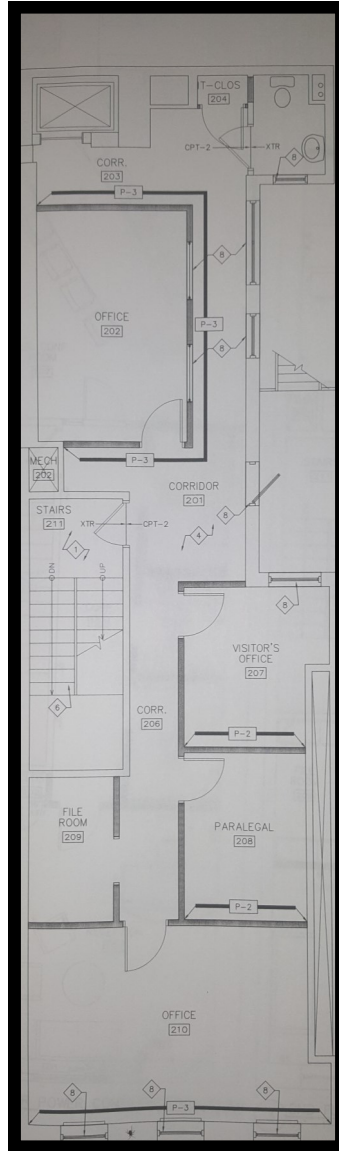
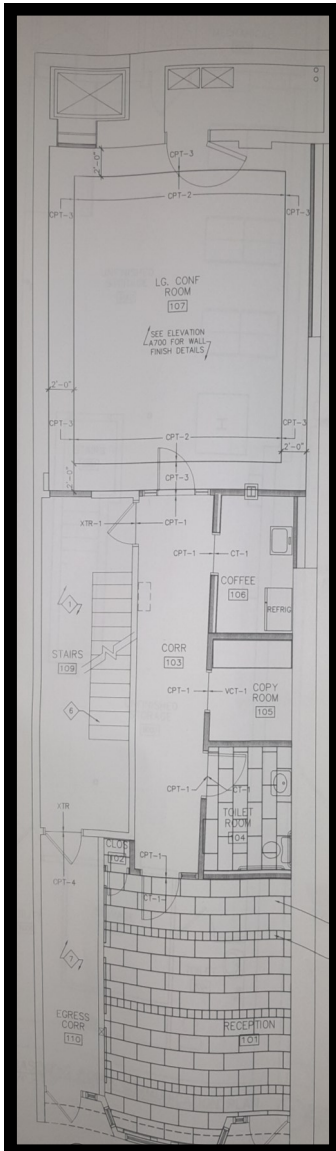
BUILDING PLANS

1st Floor

2nd Floor

3rd Floor

4th Floor



Jim Chivers / Mitch Gold / Gary Glover
Gold And Company, LLC
5601 Newbury St.
Baltimore, MD 21209

410.578.1300 (Office)
410.578.0200 (Fax)
www.goldcommercial.net

This property offering is subject to change without notice. All information is deemed reliable but not guaranteed.